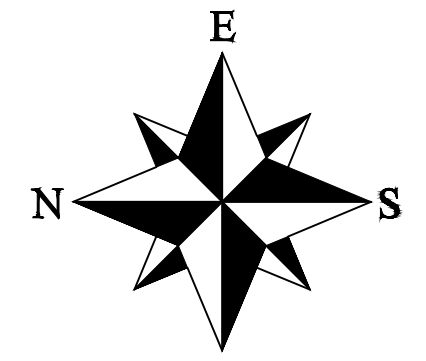


TRANSMISSION LINE CONSTRUCTION PLANS

BEAVER WA - HIGHWAY 101 MP 198.74 TO 196.18

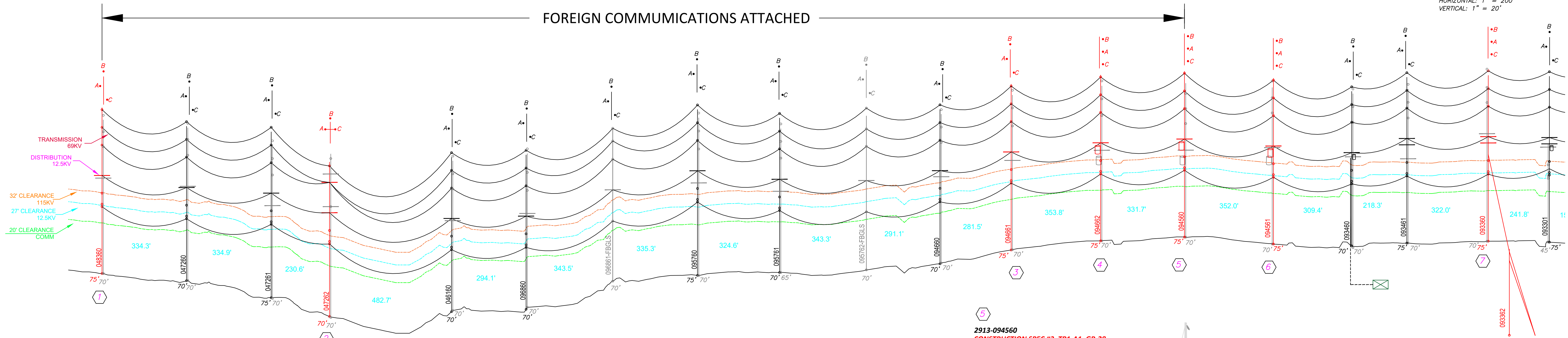


SCALE
HORIZONTAL: 1" = 200'
VERTICAL: 1" = 20'

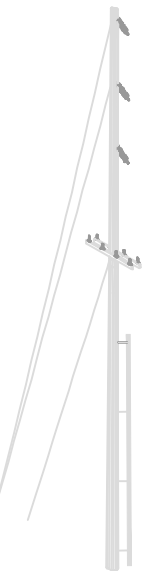
TRANSFER EXISTING 69KV TRANSMISSION: 795AAC

TRANSFER EXISTING 12.5KV DISTRIBUTION: 4/0ACSR

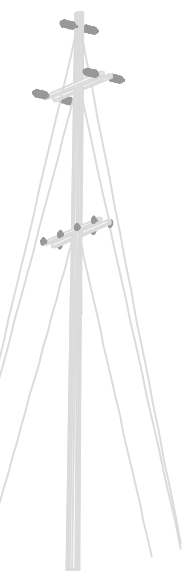
FOREIGN COMMUNICATIONS ATTACHED



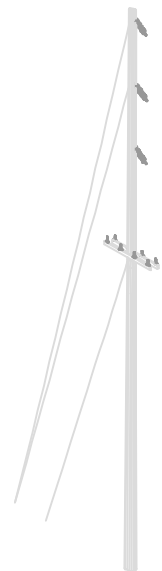
- 2913-048360**
CONSTRUCTION SPEC #1, RP2, GR-28
REMOVE
(1) 70' CEDAR POLE
(1) 69KV TANGENT VERTICAL POST INSUL
(1) 12.5KV 3Ø PRI TANG DISTR, UPPER-N
INSTALL
(1) TP75FBGLS, 75'-H1 FIBERGLASS POLE
(1) 69TV1, TANGENT, VERTICAL, 3-HORIZ POST
(3) CL-PI-9, 795AAC POST INSULATOR CLAMP
(3) TY6-K, 795AAC ARMOR ROD
(1) CUTD10, PRI 3Ø TANGENT UPPER-N, DOUBLE XARM
(4) TY3-D, 4/0ACSR DOUBLE SUPPPORT TIE
(1) RP2, 2Ø PRI OH TO UG, 1Ø
(2) CL-ST-4, 4/0ACSR STIRRUP CLAMP
(2) DFUN40K, 40K FUSE
(2) CA-BRS, FIBGLS XARM CUTOUT BRACKET
(1) GR-28, GROUND, UPPER-N
(1) CNC-3, AMPACT, 4/0ACSR TO #2STR-CU
(3) +GY-3, DOWN GUY, 18M



- 2913-047262**
CONSTRUCTION SPEC #2, GR-28
REMOVE
(1) 70' CEDAR POLE
(1) 69KV DOUBLE DEAD-END, CROSSARM
(1) 12.5KV DOUBLE DEAD-END, UPPER-N
INSTALL
(1) TP70FBGLS, 70'-H1 FIBERGLASS POLE
(1) 69TV1, TANGENT, VERTICAL, 3-HORIZ POST
(3) CL-PI-9, 795AAC POST INSULATOR CLAMP
(3) TY6-K, 795AAC ARMOR ROD
(1) CUTD10, PRI 3Ø TANGENT UPPER-N, DOUBLE XARM
(4) TY3-D, 4/0ACSR DOUBLE SUPPPORT TIE
(1) RP2, 2Ø PRI OH TO UG, 1Ø
(2) CL-ST-4, 4/0ACSR STIRRUP CLAMP
(2) DFUN40K, 40K FUSE
(2) CA-BRS, FIBGLS XARM CUTOUT BRACKET
(1) GR-28, GROUND, UPPER-N
(1) CNC-3, AMPACT, 4/0ACSR TO #2STR-CU
(3) +GY-3, DOWN GUY, 18M



- 2913-094661**
CONSTRUCTION SPEC #1, GR-28
REMOVE
(1) 70' CEDAR POLE
(1) 69KV TANGENT VERTICAL POST INSUL
(1) 12.5KV 3Ø PRI TANG DISTR, UPPER-N
INSTALL
(1) TP75FBGLS, 75'-H1 FIBERGLASS POLE
(1) 69TV1, TANGENT, VERTICAL, 3-HORIZ POST
(3) CL-PI-9, 795AAC POST INSULATOR CLAMP
(3) TY6-K, 795AAC ARMOR ROD
(1) CUTD10, PRI 3Ø TANGENT UPPER-N, DOUBLE XARM
(4) TY3-D, 4/0ACSR DOUBLE SUPPPORT TIE
(1) GR-28, GROUND, UPPER-N
(1) CNC-3, AMPACT, 4/0ACSR TO #2STR-CU
(3) +GY-3, DOWN GUY, 18M



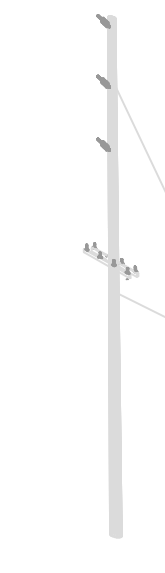
- 2913-094662**
CONSTRUCTION SPEC #3, TR1-A1, GR-28
REMOVE
(1) 70' CEDAR POLE
(1) 69KV TANGENT VERTICAL POST INSUL
(1) 12.5KV 3Ø PRI TANG DISTR, UPPER-N
INSTALL
(1) TP75FBGLS, 75'-H1 FIBERGLASS POLE
(1) 69TV1, TANGENT, VERTICAL, 3-HORIZ POST
(3) CL-PI-9, 795AAC POST INSULATOR CLAMP
(3) TY6-K, 795AAC ARMOR ROD
(1) CUTD10, PRI 3Ø TANGENT UPPER-N, DOUBLE XARM
(4) TY3-D, 4/0ACSR DOUBLE SUPPPORT TIE
(1) T15F1, 15KVA TRANSFORMER
(1) TR1-A1, 1Ø TRANSFORMER FUSING
(1) CL-ST-4, 4/0ACSR STIRRUP CLAMP
(1) DFUN15K, 15K FUSE
(1) CZCR4/02ST, CRIMPIT, 4/0ACSR TO #2CU
(1) SP+CL1, SECONDARY SERVICE
(1) GR-28, GROUND, UPPER-N
(1) CNC-3, AMPACT, 4/0ACSR TO #2STR-CU
(3) +GY-3, DOWN GUY, 18M



- 2913-094560**
CONSTRUCTION SPEC #3, TR1-A1, GR-28
REMOVE
(1) 70' CEDAR POLE
(1) 69KV TANGENT VERTICAL POST INSUL
(1) 12.5KV 3Ø PRI TANG DISTR, UPPER-N
INSTALL
(1) TP75FBGLS, 75'-H1 FIBERGLASS POLE
(1) 69TV1, TANGENT, VERTICAL, 3-HORIZ POST
(3) CL-PI-9, 795AAC POST INSULATOR CLAMP
(3) TY6-K, 795AAC ARMOR ROD
(1) CUTD10, PRI 3Ø TANGENT UPPER-N, DOUBLE XARM
(4) TY3-D, 4/0ACSR DOUBLE SUPPPORT TIE
(1) T15F1, 15KVA TRANSFORMER
(1) TR1-A1, 1Ø TRANSFORMER FUSING
(1) CL-ST-4, 4/0ACSR STIRRUP CLAMP
(1) DFUN15K, 15K FUSE
(1) CZCR4/02ST, CRIMPIT, 4/0ACSR TO #2CU
(1) SP+CL1, SECONDARY SERVICE
(1) GR-28, GROUND, UPPER-N
(1) CNC-3, AMPACT, 4/0ACSR TO #2STR-CU
(3) +GY3, DOWN GUY, 18M



- 2913-093360**
CONSTRUCTION SPEC #7, GR-28
REMOVE
(1) 70' CEDAR POLE
(1) 69KV TANGENT VERTICAL POST INSUL
(1) 12.5KV 3Ø PRI TANG DISTR, UPPER-N
INSTALL
(1) TP75FBGLS, 75'-H1 FIBERGLASS POLE
(1) 69TV1, TANGENT, VERTICAL, 3-HORIZ POST
(3) CL-SP-9, 795AAC POST INSULATOR CLAMP
(3) TY6-K, 795AAC ARMOR ROD
(1) CUTD10, PRI 3Ø TANGENT UPPER-N, DOUBLE XARM
(4) TY3-D, 4/0ACSR DOUBLE SUPPPORT TIE
(1) GR-28, GROUND, UPPER-N
(1) CNC-3, AMPACT, 4/0ACSR TO #2STR-CU
(2) +GYSP3, SPAN GUY, 18M



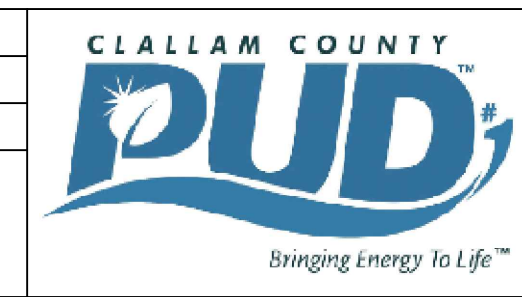
- 2913-093362**
CONSTRUCTION SPEC #7
REMOVE
(1) 45' CEDAR POLE
(2) DOWN GUYS
INSTALL
(1) TP45FBGLS, 45'-H1 FIBERGLASS POLE
(2) +GY3, DOWN GUY



THIS DRAWING WAS PREPARED BY CLALLAM COUNTY PUD FOR A SPECIFIC PROJECT, TAKING INTO CONSIDERATION THE SPECIFIC AND UNIQUE REQUIREMENTS OF THE PROJECT. REUSE OF THIS DRAWING OR ANY INFORMATION CONTAINED IN THIS DRAWING FOR ANY PURPOSE IS PROHIBITED UNLESS WRITTEN PERMISSION FROM BOTH CLALLAM AND CLALLAM'S CLIENT IS GRANTED.

REV	ISSUED FOR BIDDING	DATE	DRN	DSGN	CKD	APPD	REFERENCE DRAWINGS
0	ISSUED FOR BIDDING	4/30/24	BENP	BENP			
	REVISIONS						

DSGN	BENP	2/2024
SURV		
STKD		
SCALE:	1" = 200'	

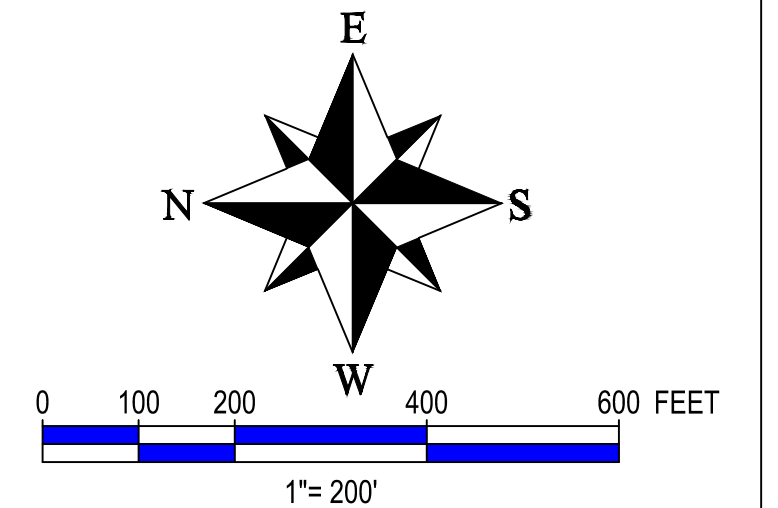


CLALLAM COUNTY PUD #1
BEAVER WA
69KV TRANSMISSION REBUILD
PROFILE VIEW 1

WORK ORDER #
23-1683
DRAWING NUMBER
SHT. 1 OF 1

TRANSMISSION LINE CONSTRUCTION PLANS

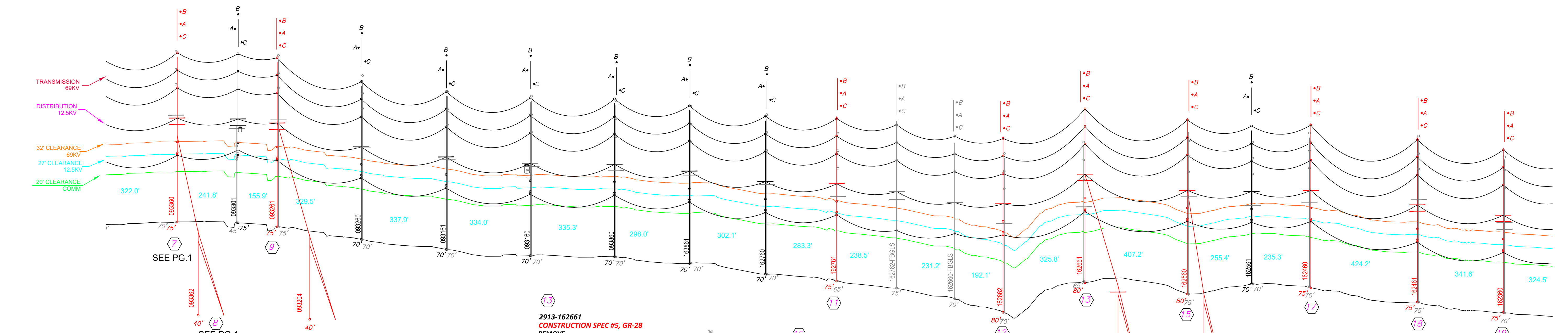
BEAVER WA - HIGHWAY 101 MP 198.74 TO 196.18



TRANSFER EXISTING 69KV TRANSMISSION: 795AAC

TRANSFER EXISTING 12.5KV DISTRIBUTION: 4/0ACSR

SCALE
HORIZONTAL: 1" = 200'
VERTICAL: 1" = 20'



- 2913-093261**
CONSTRUCTION SPEC #4, GR-28
REMOVE
- (1) 70' CEDAR POLE
 - (1) 69KV TANGENT VERTICAL POST INSUL
 - (1) 12.5KV 3Ø PRI TANG DISTR, UPPER-N
- INSTALL**
- (1) TP75FBGLS, 75'-H1 FIBERGLASS POLE
 - (1) 69TV1, TANGENT, VERTICAL, 3-HORIZ POST
 - (3) CL-PI-9, 795AAC POST INSULATOR CLAMP
 - (3) TY6-K, 795AAC ARMOR ROD
 - (1) CUTD10, PRI 3Ø TANGENT UPPER-N, DOUBLE XARM
 - (4) TY3-D, 4/0ACSR DOUBLE SUPPPORT TIE
 - (1) BUTSD8, PRI VØ, SINGLE DEAD-END
 - (3) DDEBS40AS, 4/0ACSR BOLTED DEAD-END
 - (2) XB651-220, CUTOUT/JUMPER ASSY.
 - (2) DFUN65K, 65K FUSE
 - (2) CL-ST-4, 4/0ACSR STIRRUP CLAMP
 - (2) CL-HL, HOT LINE CLAMP
 - (2) DJUMP40AS, 4/0ACSR JUMPER
 - (2) CNC-4, AMPACT, 4/0ACSR TO 4/0ACSR
 - (1) CNC-1, AMPACT, 4/0ACSR TO #6CU
 - (1) GR-28, GROUND, UPPER-N
 - (1) CNC-3, AMPACT, 4/0ACSR TO #2STR-CU
 - (2) +GYS3, SPAN GUY, 18M
 - (1) +GY3, DOWN GUY, 18M

- 2913-162761**
CONSTRUCTION SPEC #1, GR-28
REMOVE
- (1) 70' CEDAR POLE
 - (1) 69KV TANGENT VERTICAL POST INSUL
 - (1) 12.5KV 3Ø PRI TANG DISTR, UPPER-N
- INSTALL**
- (1) TP75FBGLS, 75'-H1 FIBERGLASS POLE
 - (1) 69TV1, TANGENT, VERTICAL, 3-HORIZ POST
 - (3) CL-PI-9, 795AAC POST INSULATOR CLAMP
 - (3) TY6-K, 795AAC ARMOR ROD
 - (1) CUTD10, PRI 3Ø TANGENT UPPER-N, DOUBLE XARM
 - (4) TY3-D, 4/0ACSR DOUBLE SUPPPORT TIE
 - (1) GR-28, GROUND, UPPER-N
 - (1) CNC-3, AMPACT, 4/0ACSR TO #2STR-CU
 - (3) +GY-3, DOWN GUY, 18M

- 2913-162661**
CONSTRUCTION SPEC #5, GR-28
REMOVE
- (1) 70' CEDAR POLE
 - (1) 69KV TANGENT VERTICAL POST INSUL
 - (1) 12.5KV 3Ø PRI TANG DISTR, UPPER-N
- INSTALL**
- (1) TP80FBGLS, 80'-H1 FIBERGLASS POLE
 - (1) 69TV1, TANGENT, VERTICAL, 3-HORIZ POST
 - (3) CL-PI-9, 795AAC POST INSULATOR CLAMP
 - (3) TY6-K, 795AAC ARMOR ROD
 - (1) CUTD10, PRI 3Ø TANGENT UPPER-N, DOUBLE XARM
 - (4) TY3-D, 4/0ACSR DOUBLE SUPPPORT TIE
 - (2) DDEBS2AS, DEAD-END, BOLTED, #2ACSR
 - (1) XB651-220, CUTOUT/JUMPER ASSY.
 - (1) DFUN60K, 60K FUSE
 - (1) CL-ST-4, STIRRUP CLAMP, 4/0ACSR
 - (1) CL-HL, HOT LINE CLAMP
 - (2) DJUMP2AS, #2ACSR JUMPER
 - (2) CNA-4, AMPACT, 2ACSR TO 2ACSR
 - (1) GR-28, GROUND, UPPER-N
 - (1) CNC-3, AMPACT, 4/0ACSR TO #2STR-CU
 - (2) +GYS3, SPAN GUY, 18M

- 2913-162560**
CONSTRUCTION SPEC #13, GR-28
REMOVE
- (1) 70' CEDAR POLE
 - (1) 69KV TANGENT VERTICAL POST INSUL
 - (1) 12.5KV 3Ø PRI TANG DISTR, UPPER-N
- INSTALL**
- (1) TP80FBGLS, 80'-H1 FIBERGLASS POLE
 - (1) 69TV6, TANGENT, VERTICAL, SUSP. SWING ANGLE
 - (3) CL-SP-9, 795AAC POST INSULATOR CLAMP
 - (3) TY6-K, 795AAC ARMOR ROD
 - (1) CUTD10, PRI 3Ø TANGENT UPPER-N, DOUBLE XARM
 - (4) TY3-D, 4/0ACSR DOUBLE SUPPPORT TIE
 - (1) GR-28, GROUND, UPPER-N
 - (1) CNC-3, AMPACT, 4/0ACSR TO #2STR-CU
 - (2) +GY-3, SPAN GUY, 18M

- 2913-162562**
CONSTRUCTION SPEC #7
REMOVE
- (1) 45' CEDAR POLE
 - (2) DOWN GUYS
- INSTALL**
- (1) TP45FBGLS, 45'-H1 FIBERGLASS POLE
 - (2) +GY3, DOWN GUY

- 2913-162600**
CONSTRUCTION SPEC #6, TR1-A1, XB651-224, GR-27
REMOVE
- (1) 45' CEDAR POLE
- INSTALL**
- (1) TP50FBGLS - 50FT FIBERGLASS POLE
 - (2) 2701500, SPAN GUY, 2-BOLT EYE PLATE
 - (1) AUTSD8, SINGLE PHASE DOUBLE DEAD-END
 - (2) DIJUMP2AS, #2ACSR JUMPER
 - (4) CNA-4, AMPACT #2ACSR TO #2ACSR
 - (4) DDEBS2AS, #2ACSR BOLTED DEAD-END
 - (2) TY1-B, #2ACSR SINGLE TOP TIES
 - (1) T15F1, 15KVA TRANSFORMER
 - (1) XB651-220
 - (1) DFUN40K, 40K FUSE
 - (1) TR1-A1, 1Ø TRANSFORMER FUSING
 - (1) CL-ST-2, #2ACSR STIRRUP CLAMP
 - (1) DFUN15K, 15K FUSE
 - (1) CR1/02ST, CRIMPIT #2ACSR TO #2CU
 - (1) SP+CL1, SECONDARY SERVICE
 - (1) GR-27, GROUND, UPPER-N
 - (2) +GY3, 18M DOWN GUY

- 2913-162460**
CONSTRUCTION SPEC #1, GR-28
REMOVE
- (1) 70' CEDAR POLE
 - (1) 69KV TANGENT VERTICAL POST INSUL
 - (1) 12.5KV 3Ø PRI TANG DISTR, UPPER-N
- INSTALL**
- (1) TP75FBGLS, 75'-H1 FIBERGLASS POLE
 - (1) 69TV1, TANGENT, VERTICAL, 3-HORIZ POST
 - (3) CL-PI-9, 795AAC POST INSULATOR CLAMP
 - (3) TY6-K, 795AAC ARMOR ROD
 - (1) CUTD10, PRI 3Ø TANGENT UPPER-N, DOUBLE XARM
 - (4) TY3-D, 4/0ACSR DOUBLE SUPPPORT TIE
 - (1) GR-28, GROUND, UPPER-N
 - (1) CNC-3, AMPACT, 4/0ACSR TO #2STR-CU
 - (3) +GY-3, DOWN GUY, 18M

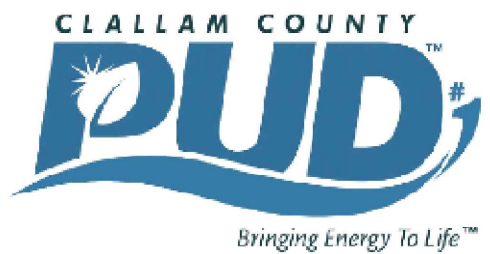
- 2913-162461**
CONSTRUCTION SPEC #8, GR-28
REMOVE
- (1) 70' CEDAR POLE
 - (1) 69KV TANGENT VERTICAL POST INSUL
 - (1) 12.5KV 3Ø PRI TANG DISTR, UPPER-N
- INSTALL**
- (1) TP75FBGLS, 75'-H1 FIBERGLASS POLE
 - (1) 69TV1, TANGENT, VERTICAL, 3-HORIZ POST
 - (3) CL-PI-9, 795AAC POST INSULATOR CLAMP
 - (3) TY6-K, 795AAC ARMOR ROD
 - (1) CUTD10, PRI 3Ø TANGENT UPPER-N, DOUBLE XARM
 - (4) TY3-D, 4/0ACSR DOUBLE SUPPPORT TIE
 - (1) CUTSD10, PRI 3Ø SINGLE DEAD-END
 - (3) DDEBS10AS, #4-1/0ACSR BOLTED DEAD-END
 - (2) XB651-220, CUTOUT/JUMPER ASSY.
 - (2) DFUN65K, 65K FUSE
 - (3) CL-ST-4, 4/0ACSR STIRRUP CLAMP
 - (2) CL-HL, HOT LINE CLAMP
 - (2) DJUMP2AS, #2ACSR JUMPER
 - (1) CNC-4, AMPACT, 4/0ACSR TO #2ACSR
 - (4) CNA-4, AMPACT, 2ACSR TO 2ACSR
 - (1) GR-28, GROUND, UPPER-N
 - (1) CNC-3, AMPACT, 4/0ACSR TO #2STR-CU
 - (5) +GY3, DOWN GUY, 18M

- 2913-162360**
CONSTRUCTION SPEC #11, GR-28
REMOVE
- (1) 70' CEDAR POLE
 - (1) 69KV TANGENT VERTICAL POST INSUL
 - (1) 12.5KV 3Ø PRI TANG DISTR, UPPER-N
- INSTALL**
- (1) TP75FBGLS, 75'-H1 FIBERGLASS POLE
 - (1) 69TV1, TANGENT, VERTICAL, 3-HORIZ POST
 - (3) CL-PI-9, 795AAC POST INSULATOR CLAMP
 - (3) TY6-K, 795AAC ARMOR ROD
 - (1) CUTD10, PRI 3Ø TANGENT UPPER-N, DOUBLE XARM
 - (4) TY3-D, 4/0ACSR DOUBLE SUPPPORT TIE
 - (1) BUTSD8, PRI VØ, SINGLE DEAD-END
 - (3) DDEBS40AS, 4/0ACSR BOLTED DEAD-END
 - (2) XB651-220, CUTOUT/JUMPER ASSY.
 - (2) DFUN65K, 65K FUSE
 - (2) CL-ST-4, 4/0ACSR STIRRUP CLAMP
 - (2) CL-HL, HOT LINE CLAMP
 - (2) DJUMP40AS, 4/0ACSR JUMPER
 - (3) CNC-4, AMPACT, 4/0ACSR TO 4/0ACSR
 - (1) CNC-1, AMPACT, 4/0ACSR TO #6CU
 - (1) GR-28, GROUND, UPPER-N
 - (1) CNC-3, AMPACT, 4/0ACSR TO #2STR-CU
 - (3) +GY3, DOWN GUY, 18M

THIS DRAWING WAS PREPARED BY CLALLAM COUNTY PUD FOR A SPECIFIC PROJECT, TAKING INTO CONSIDERATION THE SPECIFIC AND UNIQUE REQUIREMENTS OF THE PROJECT. REUSE OF THIS DRAWING OR ANY INFORMATION CONTAINED IN THIS DRAWING FOR ANY PURPOSE IS PROHIBITED UNLESS WRITTEN PERMISSION FROM BOTH CLALLAM AND CLALLAM'S CLIENT IS GRANTED.

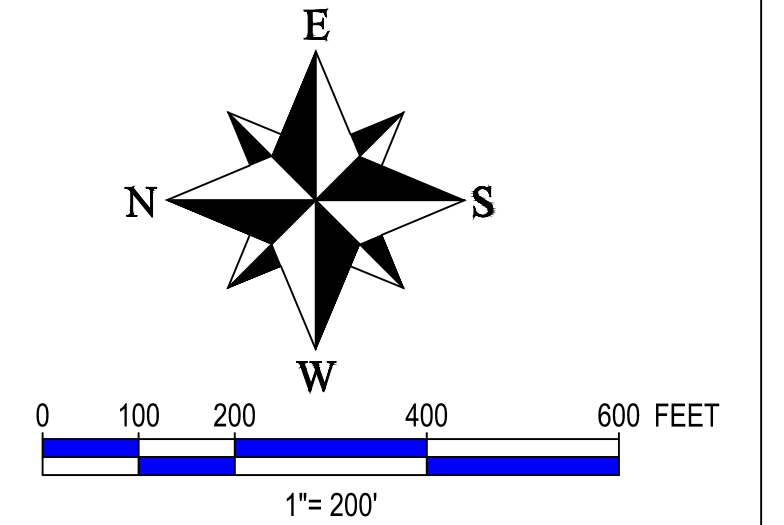
REV	ISSUED FOR BIDDING	DATE	DRN	DSGN	CKD	APPD	REFERENCE DRAWINGS
0	ISSUED FOR BIDDING	4/30/24	BENP	BENP			

DSGN BENP 2/2024
SURV
STKD
SCALE: 1" = 200'

	CLALLAM COUNTY PUD #1	WORK ORDER #	REV
	BEAVER WA 69KV TRANSMISSION REBUILD PROFILE VIEW 2	23-1683	0
		DRAWING NUMBER	SHT. 2 OF 5

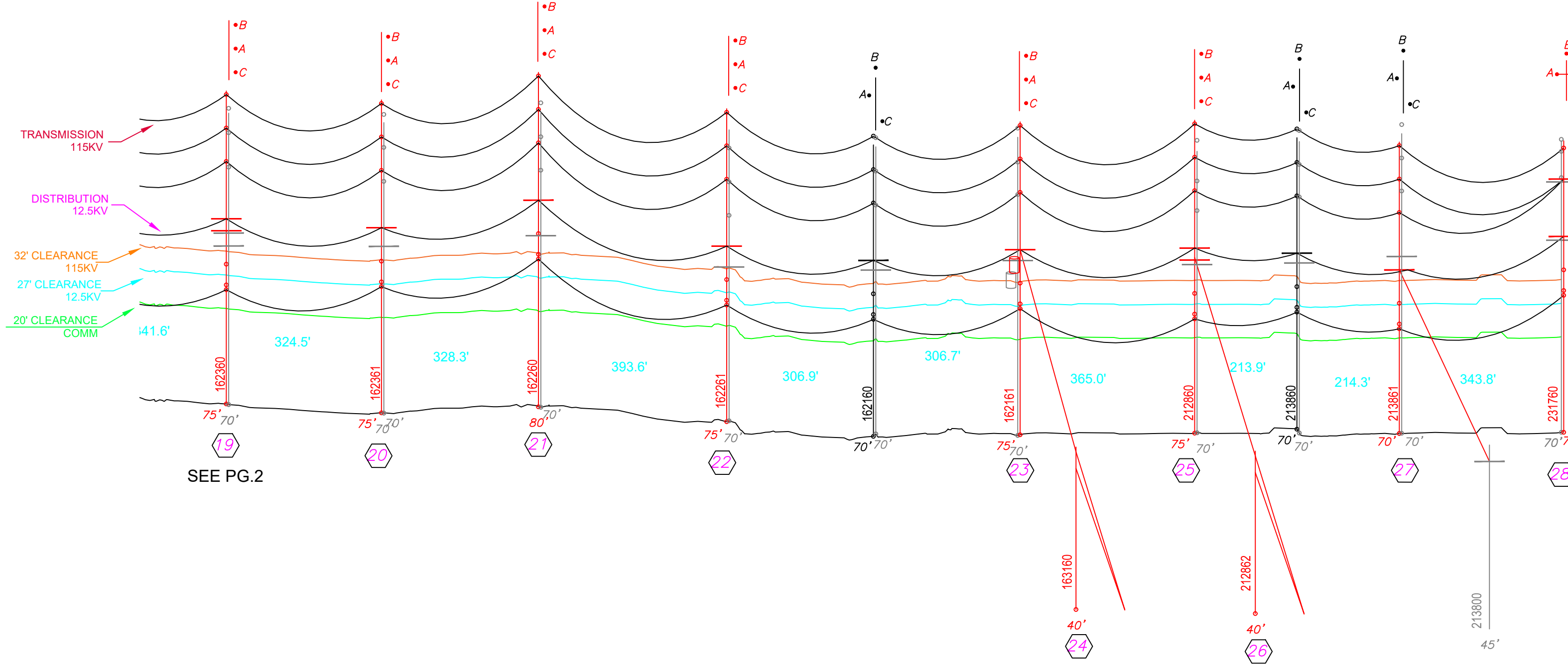
TRANSMISSION LINE CONSTRUCTION PLANS

BEAVER WA - HIGHWAY 101 MP 198.74 TO 196.18



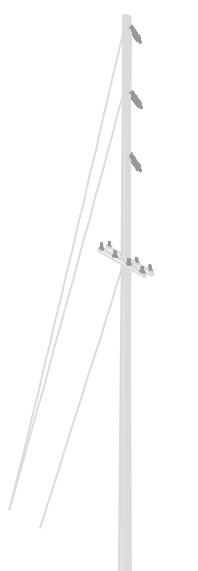
SCALE
HORIZONTAL: 1" = 200'
VERTICAL: 1" = 20'

TRANSFER EXISTING 69KV TRANSMISSION: 795AAC
TRANSFER EXISTING 12.5KV DISTRIBUTION: 4/OACSR

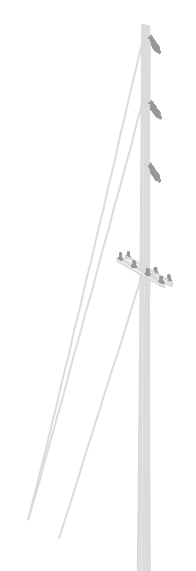


SEE PG.2

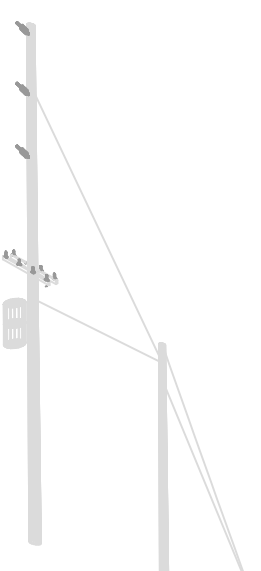
- 2913-162361**
CONSTRUCTION SPEC #1, GR-28
REMOVE
(1) 70' CEDAR POLE
(1) 69KV TANGENT VERTICAL POST INSUL
(1) 12.5KV 3Ø PRI TANG DISTR, UPPER-N
INSTALL
(1) TP75FBGLS, 75'-H1 FIBERGLASS POLE
(1) 69TV1, TANGENT, VERTICAL, 3-HORIZ POST
(3) CL-PI-9, 795AAC POST INSULATOR CLAMP
(3) TY6-K, 795AAC ARMOR ROD
(1) CUTD10, PRI 3Ø TANGENT UPPER-N, DOUBLE XARM
(4) TY3-D, 4/OACSR DOUBLE SUPPPORT TIE
(1) GR-28, GROUND, UPPER-N
(1) CNC-3, AMPACT, 4/OACSR TO #2STR-CU
(3) +GY3, DOWN GUY, 18M



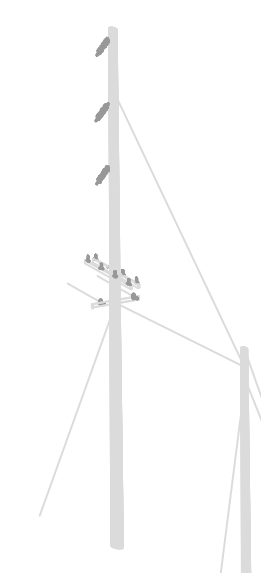
- 2913-162261**
CONSTRUCTION SPEC #12, GR-28
REMOVE
(1) 70' CEDAR POLE
(1) 69KV TANGENT VERTICAL POST INSUL
(1) 12.5KV 3Ø PRI TANG DISTR, UPPER-N
INSTALL
(1) TP75FBGLS, 75'-H1 FIBERGLASS POLE
(1) 69TV6, TANGENT, VERTICAL, SUSP. SWING ANGLE
(3) CL-SP-9, 795AAC SUSPENSION CLAMP
(3) TY6-K, 795AAC ARMOR ROD
(1) CUTD10, PRI 3Ø TANGENT UPPER-N, DOUBLE XARM
(4) TY3-D, 4/OACSR DOUBLE SUPPPORT TIE
(1) GR-28, GROUND, UPPER-N
(1) CNC-3, AMPACT, 4/OACSR TO #2STR-CU
(3) +GY3, DOWN GUY, 18M



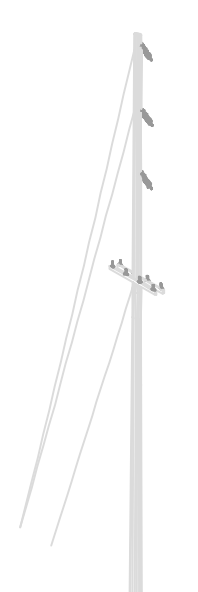
- 2913-162161**
CONSTRUCTION SPEC #7, TR1-A1, GR-28
REMOVE
(1) 70' CEDAR POLE
(1) 69KV TANGENT VERTICAL POST INSUL
(1) 12.5KV 3Ø PRI TANG DISTR, UPPER-N
INSTALL
(1) TP75FBGLS, 75'-H1 FIBERGLASS POLE
(1) 69TV1, TANGENT, VERTICAL, 3-HORIZ POST
(3) CL-PI-9, 795AAC POST INSULATOR CLAMP
(3) TY6-K, 795AAC ARMOR ROD
(1) CUTD10, PRI 3Ø TANGENT UPPER-N, DOUBLE XARM
(4) TY3-D, 4/OACSR DOUBLE SUPPPORT TIE
(1) T15F1, 15KVA TRANSFORMER
(1) TR1-A1, 1Ø TRANSFORMER FUSING
(1) CL-ST-4, 4/OACSR STIRRUP CLAMP
(1) DFUN15K, 15K FUSE
(1) CZCR4/O2ST, CRIMPIT, 4/OACSR TO #2CU
(1) SP+CL1, SECONDARY SERVICE
(1) GR-28, GROUND, UPPER-N
(1) CNC-3, AMPACT, 4/OACSR TO #2STR-CU
(2) +GYSP3, SPAN GUY, 18M
(2) 27Ø1700, GUY ATTACHMENT, 2-BOLT EYE PLATE



- 2913-2121860**
CONSTRUCTION SPEC #9, GR-28
REMOVE
(1) 70' CEDAR POLE
(1) 69KV TANGENT VERTICAL POST INSUL
(1) 12.5KV 3Ø PRI TANG DISTR, UPPER-N
INSTALL
(1) TP75FBGLS, 75'-H1 FIBERGLASS POLE
(1) 69TV6, TANGENT, VERTICAL, SUSP. SWING ANGLE
(3) CL-SP-9, 795AAC POST INSULATOR CLAMP
(3) TY6-K, 795AAC ARMOR ROD
(1) CUTD10, PRI 3Ø TANGENT UPPER-N, DOUBLE XARM
(4) TY3-D, 4/OACSR DOUBLE SUPPPORT TIE
(1) AUTSDDB, PRI 1Ø DEAD-END, UPPER-N
(2) DDEBS1ØAS, #4-1ØOACSR BOLTED DEAD-END
(1) CL-ST-4, 4/OACSR STIRRUP CLAMP
(1) XB651-220, CUT-OUT/JUMPER ASSEMBLY
(1) DFUN1ØK, 1ØK FUSE
(2) DJUMP2AS, #2ACSR JUMPER
(1) CNC-4, AMPACT, 4/OACSR TO #2ACSR
(1) CNA-4, AMPACT, 2ACSR TO 2ACSR
(1) GR-28, GROUND, UPPER-N
(1) CNC-3, AMPACT, 4/OACSR TO #2STR-CU
(2) +GY-SP3, SPAN GUY, 18M
(1) +GY3, DOWN GUY, 18M



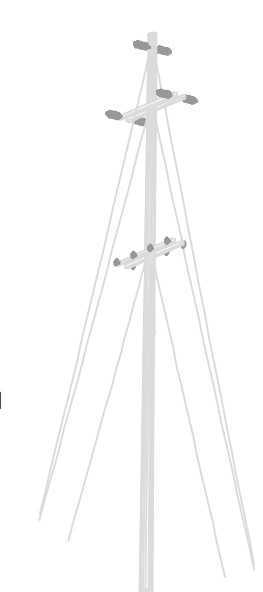
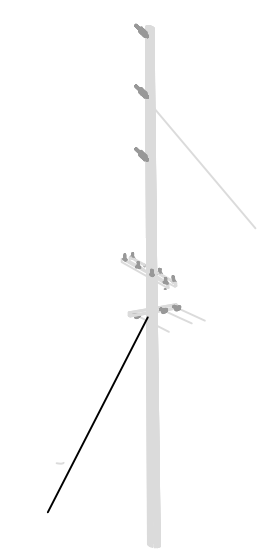
- 2913-162260**
CONSTRUCTION SPEC #1, GR-28
REMOVE
(1) 70' CEDAR POLE
(1) 69KV TANGENT VERTICAL POST INSUL
(1) 12.5KV 3Ø PRI TANG DISTR, UPPER-N
INSTALL
(1) TP8ØFBGLS, 8Ø'-H1 FIBERGLASS POLE
(1) 69TV1, TANGENT, VERTICAL, 3-HORIZ POST
(3) CL-PI-9, 795AAC POST INSULATOR CLAMP
(3) TY6-K, 795AAC ARMOR ROD
(1) CUTD10, PRI 3Ø TANGENT UPPER-N, DOUBLE XARM
(4) TY1-D, 4/OACSR SINGLE TOP TIE
(1) GR-28, GROUND, UPPER-N
(1) CNC-3, AMPACT, 4/OACSR TO #2STR-CU
(3) +GY3, DOWN GUY, 18M



- 2913-163160**
CONSTRUCTION SPEC #7
REMOVE
(1) 4Ø CEDAR POLE
(2) DOWN GUYS
INSTALL
(1) TP4ØFBGLS, 4Ø'-H1 FIBERGLASS POLE
(4) +GY3, DOWN GUY

- 2913-212860**
CONSTRUCTION SPEC #9
REMOVE
(1) 4Ø CEDAR POLE
(2) DOWN GUYS
INSTALL
(1) TP4ØFBGLS, 4Ø'-H1 FIBERGLASS POLE
(3) +GY3, DOWN GUY

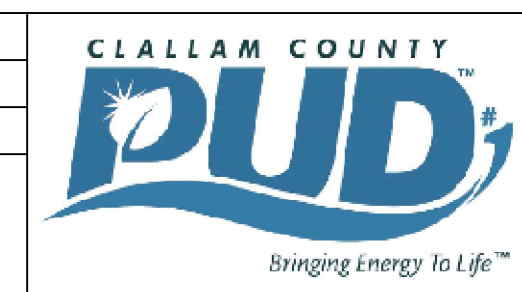
- 2913-231760**
CONSTRUCTION SPEC #2, GR-28
REMOVE
(1) 70' CEDAR POLE
(1) 69KV DOUBLE DEAD-END, CROSSARM
(1) 12.5KV DOUBLE DEAD-END, UPPER-N
INSTALL
(1) TP7ØFBGLS, 7Ø'-H1 FIBERGLASS POLE
(1) 69DX1, DOUBLE DEAD-END, CROSS-ARM
(3) TJUMP795A, JUMPER, 795AAC
(3) CL-PI-9, 795AAC POST INSULATOR CLAMP
(6) TDEC795A, DEAD-END, COMPRESSION, 795AAC
(1) CUTSDD10, DBL DEAD-END, PRI 3Ø UPPER-N, 1Ø' CROSSARM
(4) DJUMP, 4/OAS, JUMPER, 4/OACSR
(8) CNC-1Ø, AMPACT, 4/OACSR TO 4/OACSR
(8) DDEBS4/OAS, DEAD-END, BOLTED 4/OACSR
(4) TY3-D, 4/OACSR DBL SUPPORT TIE
(1) GR-28, GROUND, UPPER-N
(1) CNC-3, AMPACT, 4/OACSR TO #2STR-CU
(2) GY7, TRANSMISSION DOWN GUY
(6) 27Ø1700, GUY ATTACHMENT, 2-BOLT EYE PLATE



THIS DRAWING WAS PREPARED BY CLALLAM COUNTY PUD FOR A SPECIFIC PROJECT, TAKING INTO CONSIDERATION THE SPECIFIC AND UNIQUE REQUIREMENTS OF THE PROJECT. REUSE OF THIS DRAWING OR ANY INFORMATION CONTAINED IN THIS DRAWING FOR ANY PURPOSE IS PROHIBITED UNLESS WRITTEN PERMISSION FROM BOTH CLALLAM AND CLALLAM'S CLIENT IS GRANTED.

REV	ISSUED FOR BIDDING	DATE	DRN	DSGN	CKD	APPD	REFERENCE DRAWINGS
0	ISSUED FOR BIDDING	4/30/24	BENP	BENP			
	REVISIONS						

DSGN	BENP	2/2024
SURV		
STKD		
SCALE:	1" = 200'	



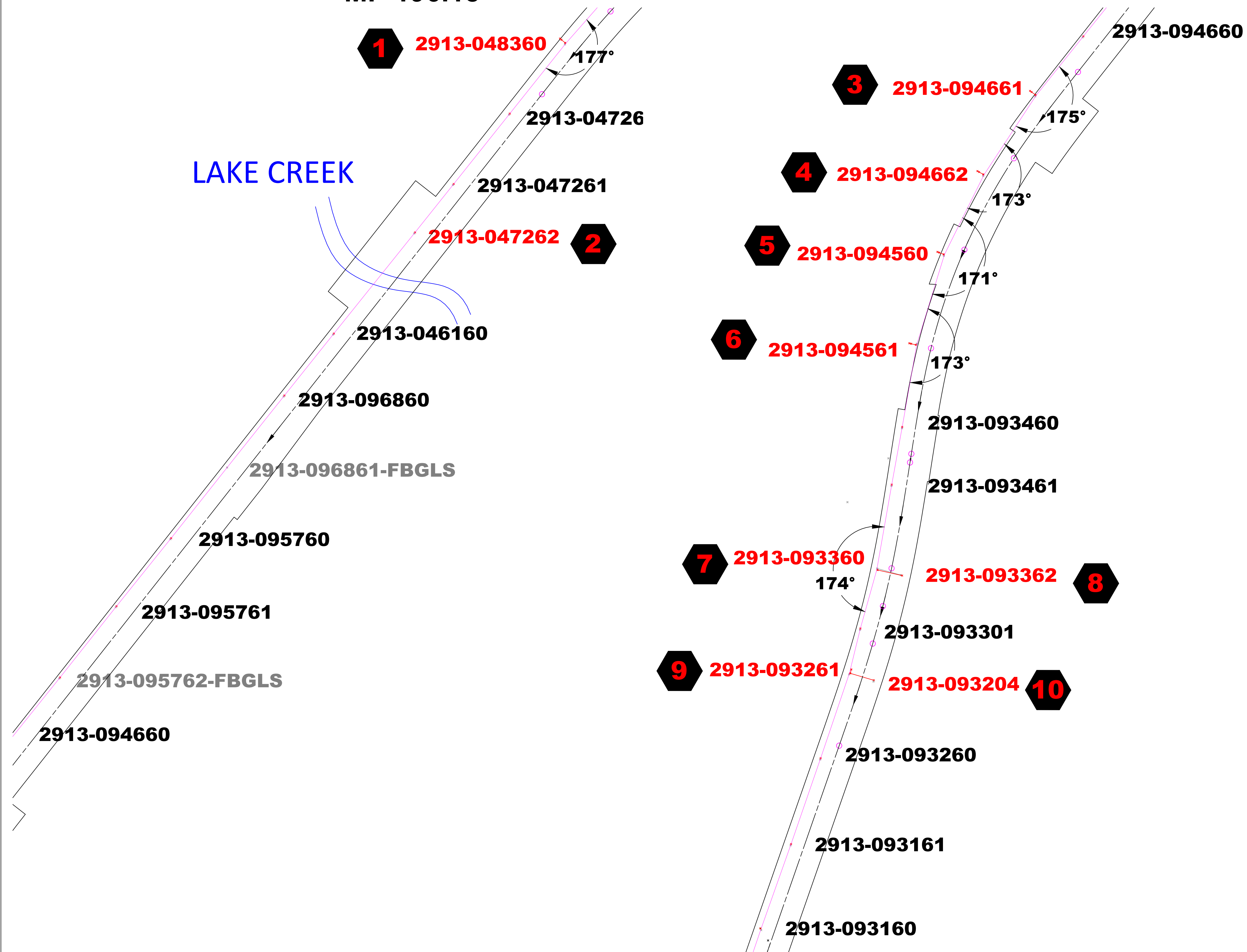
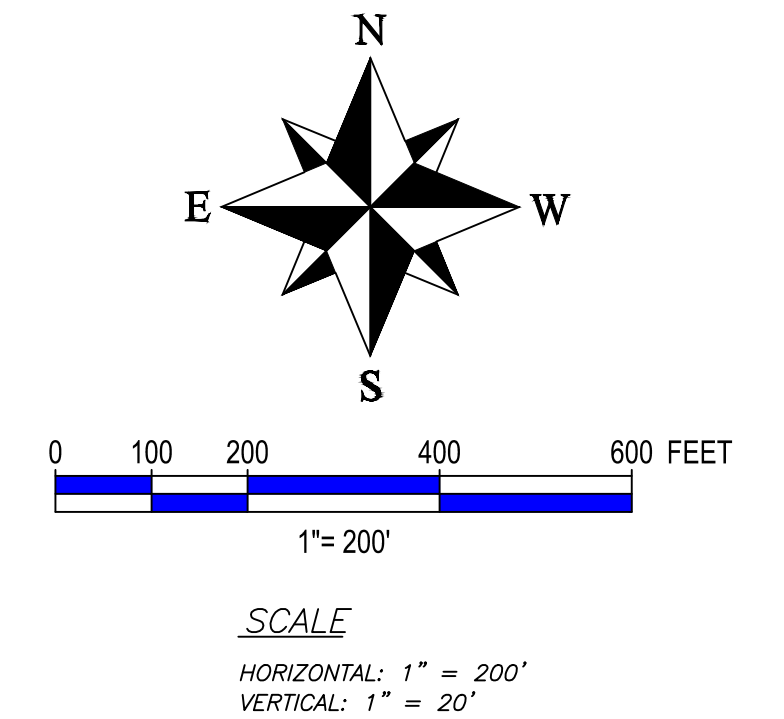
CLALLAM COUNTY PUD #1
BEAVER WA
69KV TRANSMISSION REBUILD
PROFILE VIEW 3

WORK ORDER #
23-1683
DRAWING NUMBER
SHT. 3 OF 5

TRANSMISSION LINE CONSTRUCTION PLANS

BEAVER WA – HIGHWAY 101 MP 198.74 TO 196.18

MP 196.18

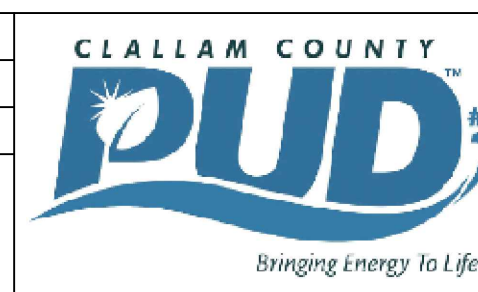


NOTE:
POLE NUMBERS
SHOWN IN RED
ARE THOSE
INCLUDED IN THIS
CONTRACT.

THIS DRAWING WAS PREPARED BY CLALLAM COUNTY PUD FOR A SPECIFIC PROJECT, TAKING INTO CONSIDERATION THE SPECIFIC AND UNIQUE REQUIREMENTS OF THE PROJECT. REUSE OF THIS DRAWING OR ANY INFORMATION CONTAINED IN THIS DRAWING FOR ANY PURPOSE IS PROHIBITED UNLESS WRITTEN PERMISSION FROM BOTH CLALLAM AND CLALLAM'S CLIENT IS GRANTED.

REV	REVISIONS	DATE	DRN	DSGN	CKD	APPD	REFERENCE DRAWINGS
0	ISSUED FOR BIDDING	4/30/24	BENP	BENP			

DSGN	BENP	2/2024
SURV		
STKD		
SCALE:	1" = 200'	

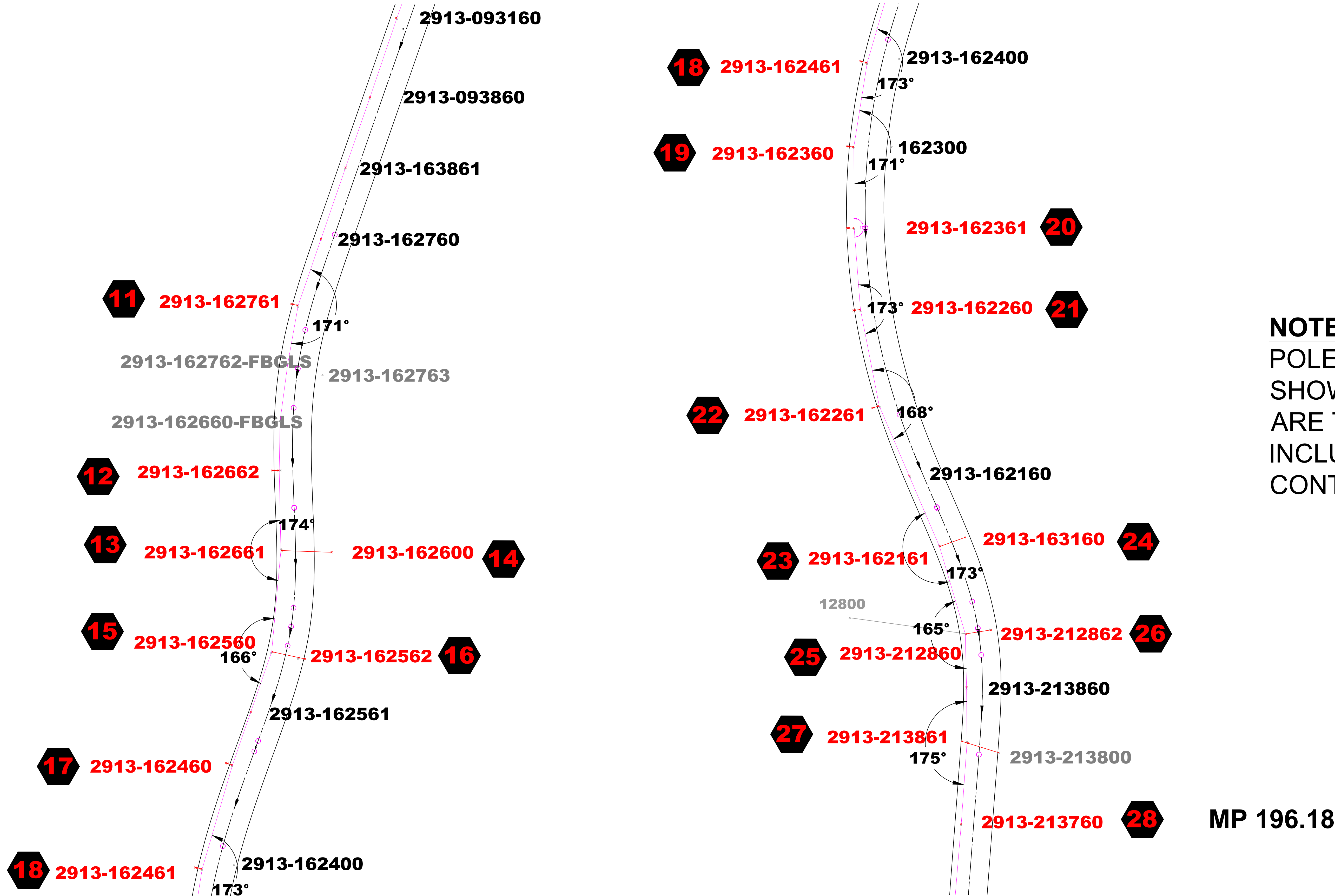
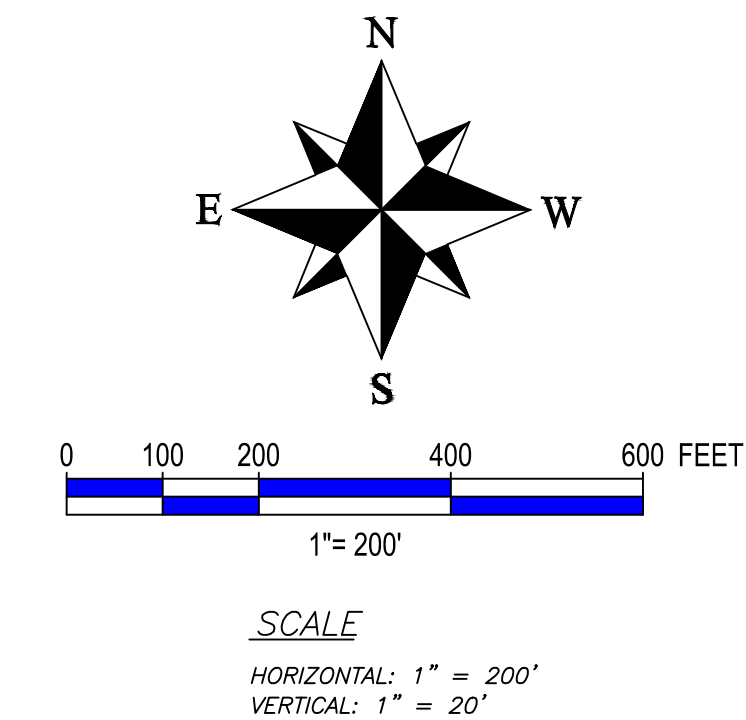


CLALLAM COUNTY PUD #1
BEAVER WA
69KV TRANSMISSION REBUILD
PROVILE VIEW 1

WORK ORDER #	REV
23-1683	0
DRAWING NUMBER	
SHT. 4 OF 5	

TRANSMISSION LINE CONSTRUCTION PLANS

BEAVER WA - HIGHWAY 101 MP 198.74 TO 196.18

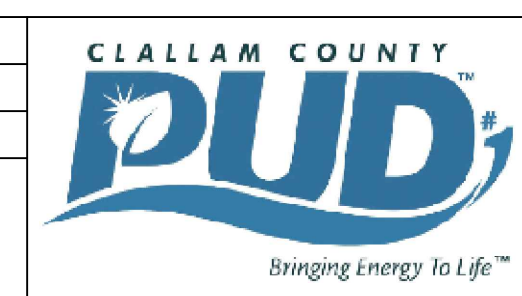


NOTE:
POLES NUMBERS
SHOWN IN RED
ARE THOSE
INCLUDED IN THIS
CONTRACT.

THIS DRAWING WAS PREPARED BY CLALLAM COUNTY PUD FOR A SPECIFIC PROJECT, TAKING INTO CONSIDERATION THE SPECIFIC AND UNIQUE REQUIREMENTS OF THE PROJECT. REUSE OF THIS DRAWING OR ANY INFORMATION CONTAINED IN THIS DRAWING FOR ANY PURPOSE IS PROHIBITED UNLESS WRITTEN PERMISSION FROM BOTH CLALLAM AND CLALLAM'S CLIENT IS GRANTED.

REV	ISSUED FOR BIDDING	DATE	DRN	DSGN	CKD	APPD	REFERENCE DRAWINGS
0	ISSUED FOR BIDDING	4/30/24	BENP	BENP			

DSGN	BENP	2/2024
SURV		
STKD		
SCALE:	1" = 200'	



CLALLAM COUNTY PUD #1
BEAVER WA
69KV TRANSMISSION REBUILD
PROFILE VIEW 2

WORK ORDER #	REV
23-1683	0
DRAWING NUMBER	
SHT. 5 OF 5	