

**INVITATION TO BID  
BID NUMBER 240803**

**ADDENDUM NO. 1**

Date: May 28, 2024

Re: HIGHWAY 101, BEAVER, WA TRANSMISSION POLE REPLACEMENT

To: ALL PROSPECTIVE BIDDERS

This Addendum No. 1 forms a part of the Contract Documents and modifies the original bidding documents dated May 16, 2024. This Addendum is issued to clarify, revise, add to, or delete from the original bidding documents. Bidders shall determine the work affected by the Addendum items.

This Addendum consists of:

**CLARIFICATION**

- 1.) What does it mean to have a competent safety coordinator on the job site? Does this mean a journeyman lineman, and can that safety coordinator perform tasks?  
**Yes, a Journeyman Lineman is acceptable as the Safety Coordinator. Yes, the Safety Coordinator can perform tasks.**
- 2.) Do we need to provide a traffic control plan, or is the one with the permit acceptable?  
**The TCP's included in the WSDOT permit are acceptable.**
- 3.) Special provision 42 for WSDOT, does the contractor need to provide the listed items for this contract?
  - a. Temporary Water Pollution/Erosion Control Plan (TESC)
  - b. Spill Prevention, Control, and Containment Plan (SPCC)
  - c. Shoring Plans (if applicable)
  - d. Pit Protection Plans (if applicable)
  - e. Dewatering Plan (if applicable)**Yes, this is supplied by the contractor.**
- 4.) Do the poles need jacked together or are they single piece poles?  
**These will be single piece poles. NOTE: Poles will not be available until 7/9/2024.**
- 5.) Are we replacing or transferring the existing transformers?  
**Replacing**
- 6.) Would one (1) or two (2) nighttime outages be approved to move/transfer the dead ends?  
**Yes, Midnight to 06:00 a.m. outage would be approved, the District prefers minimal disruptions to customers. Please indicate in your bid how many outages you would like scheduled.**
- 7.) Are we able to dig holes with a backhoe or trackhoe if needed?  
**Yes.**

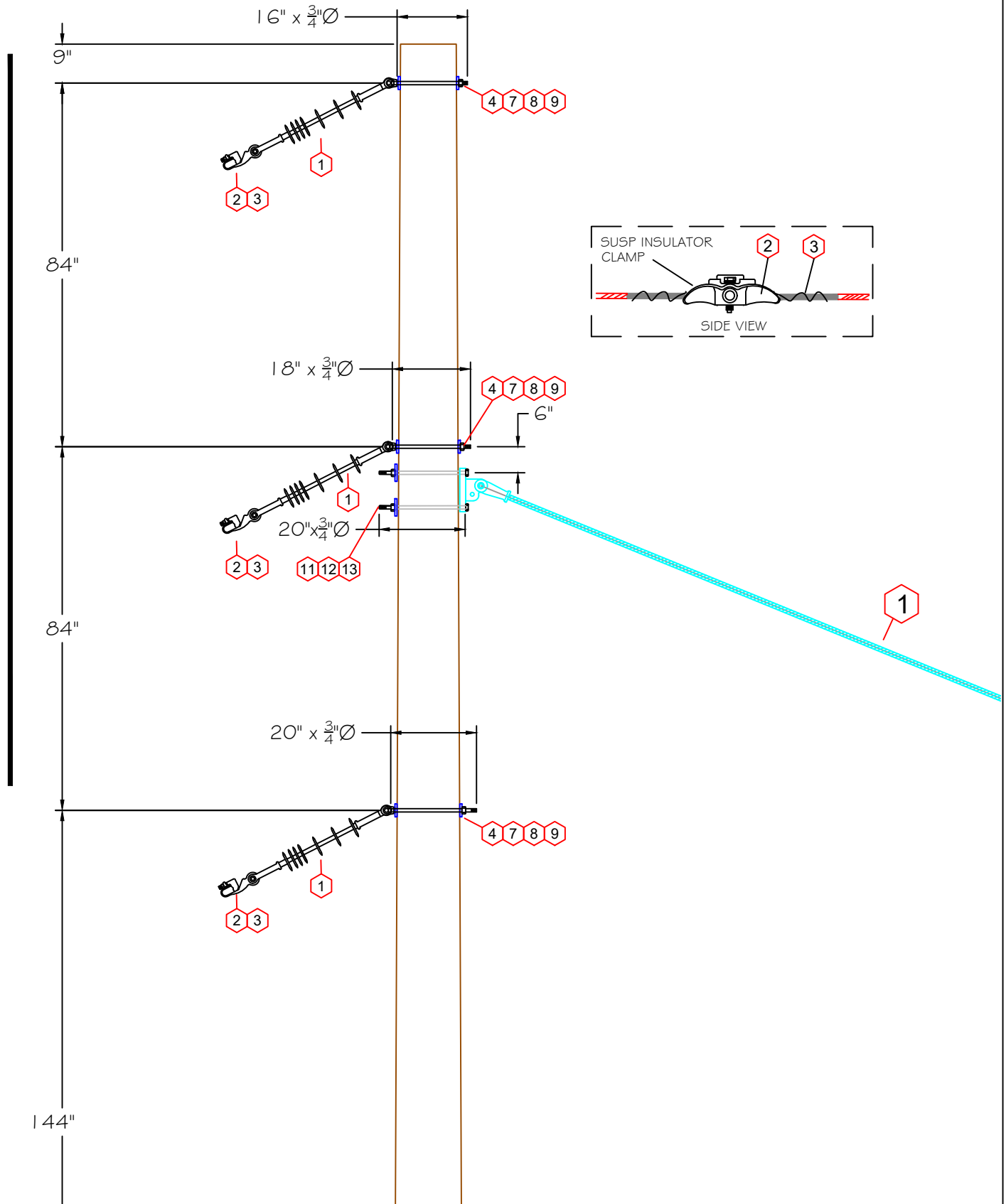
- 8.) When requiring poles to be pulled whole, does the PUD mean poles topped at the communications level or do they mean whole poles at transmission height?  
**The District prefers poles to be left as long as possible, but leaves this to the discretion of the contractor on how to cut the poles in order to perform the job safely.**
- 9.) If the PUD is requiring full poles removed at transmission height, how long does the PUD expect the energized circuits to be left spread out? Will Lumen crews show up daily to do transfers as we progress or will we need to back track frequently?  
**There are only five (5) poles with foreign communications attached. Contractor will have to work with Lumen to transfer those facilities.**
- 10.) Requesting Specs for the following: GR-28, Spec #13, +GY-SP3, GY7 (Same as +GY-7?)  
**Construction Specification #13 is attached and a part of Exhibit E – Construction Specifications.  
GR-28 is incorrect, please use GR-27.  
All necessary guying information is shown on the individual construction specifications.  
+GY-SP3, GY7 and +GY-7 specifications are not necessary**

This addendum consists of nine (9) pages. **THIS ADDENDUM SHEET MUST BE ACKNOWLEDGED ON THE BID PROPOSAL.**

FIELD

ROAD

69TV6



DATE: 1/24/24

REV:

DRAWN: JBP

CHK:



PG 1  
OF 7

BEAVER TRANSMISSION POLE REPLACEMENT

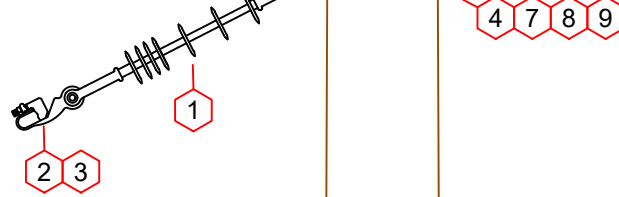
CONSTRUCTION SPEC #7

CUTD10

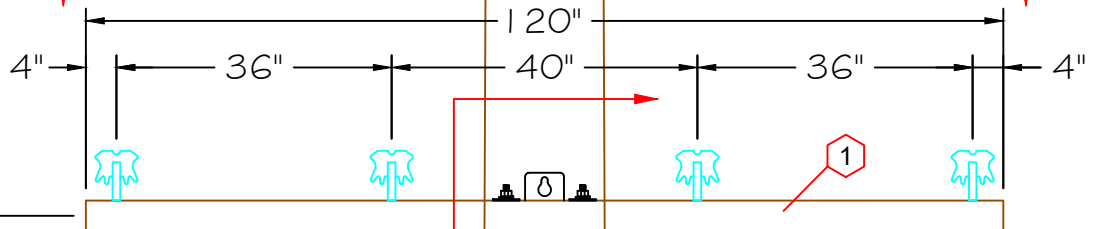
BUTSD10

144"

20" x  $\frac{3}{4}$ "  $\varnothing$



SECTION B



SECTION A

6"

20" x  $\frac{3}{4}$ "  $\varnothing$



DATE: 1/24/24

REV:

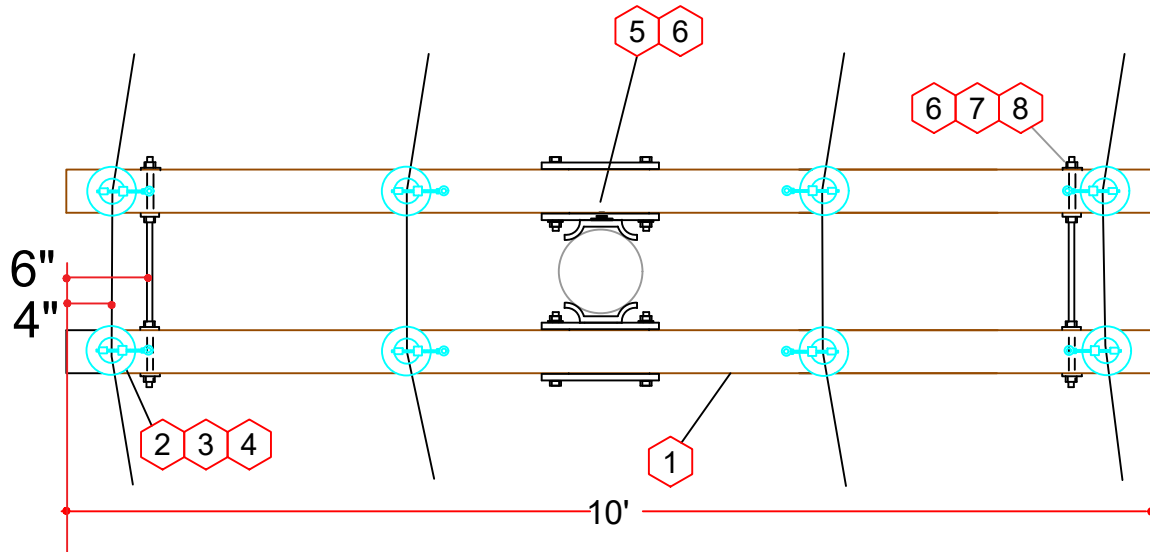
DRAWN: JBP

CHK:

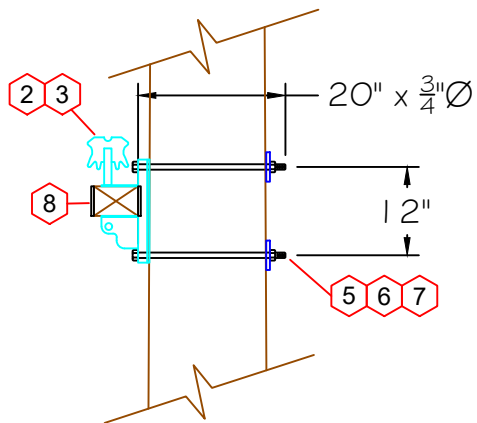


PG 2  
OF 7

# BEAVER TRANSMISSION POLE REPLACEMENT CONSTRUCTION SPEC #7



**SECTION B**



**SECTION A**

DATE: 1/24/24

REV:

DRAWN: JBP

CHK:



PG 3  
OF 7

**BEAVER TRANSMISSION POLE REPLACEMENT  
CONSTRUCTION SPEC #7**

## 69TV6

ITEM	DESCRIPTION	QTY	STOCK#
1	SUSPENSION INSULATOR, 69KV POLY	3	4063800
2	SUSPENSION CLAMP, 795AAC	3	6553200
3	ARMOR ROD 795AAC	3	5953200
4	MACH BOLT, 16" X 3/4"	1	3041600
5	MACH BOLT, 18" X 3/4"	1	3041800
6	MACH BOLT, 20" X 3/4"	1	3042000
7	WASHER, SQ CURVED, 4"	6	3303900
8	WASHER, DOUBLE COIL LOCK, 3/4"	6	3331000
9	D-EYE	3	3990100

## CUTD10

ITEM	DESCRIPTION	QTY	STOCK #
1	CROSSARM 10' HD FBGLS TANGENT	2	1051100
2	WISE TOP PIN INSULATOR 15KV	8	4001500
3	CROSSARM PIN	8	4500100
4	TIES 4/0A CSR, DOUBLE SIDE	4	6482000
5	MACH BOLT, 20" x 3/4"	2	3042000
6	WASHER SQUARE CURVED, 4" X 6"	2	3309000
7	WASHER, DOUBLE COIL LOCK, 3/4"	2	3331000
8	BOLT, DA 22" X 5/8"	2	3082200
9	WASHER, SQ FLAT 2-1/4"	8	3292000
10	WASHER, DOUBLE COIL LOCK, 5/8"	10	3330900

DATE: 1/24/24

REV:

DRAWN: JBP

CHK:

PG 4  
OF 7

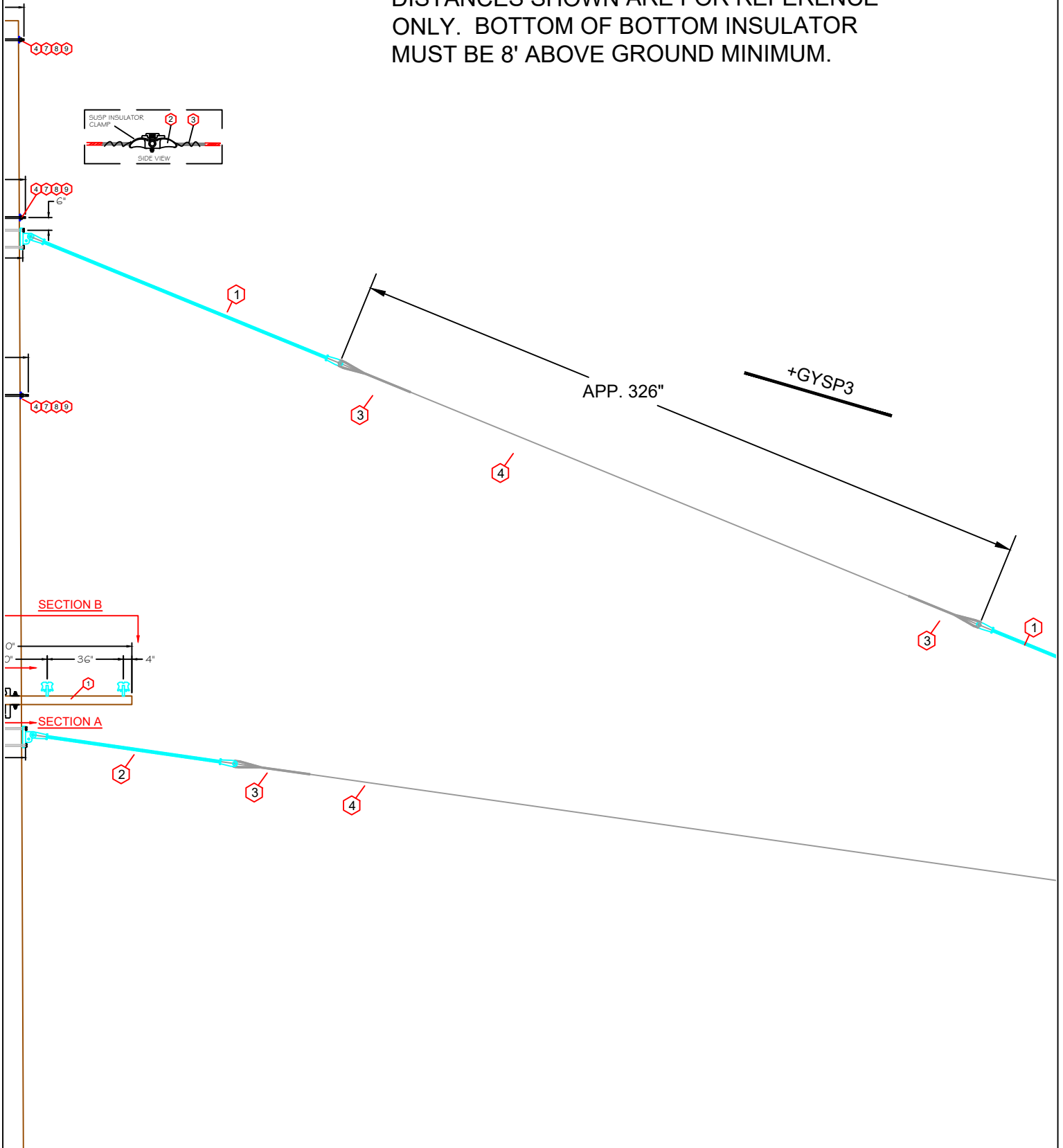
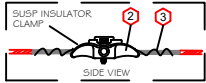
BEAVER TRANSMISSION POLE REPLACEMENT

CONSTRUCTION SPEC #7

ROAD

**NOTE:**

DISTANCES SHOWN ARE FOR REFERENCE ONLY. BOTTOM OF BOTTOM INSULATOR MUST BE 8' ABOVE GROUND MINIMUM.



DATE: 1/24/24

REV:

DRAWN: JBP

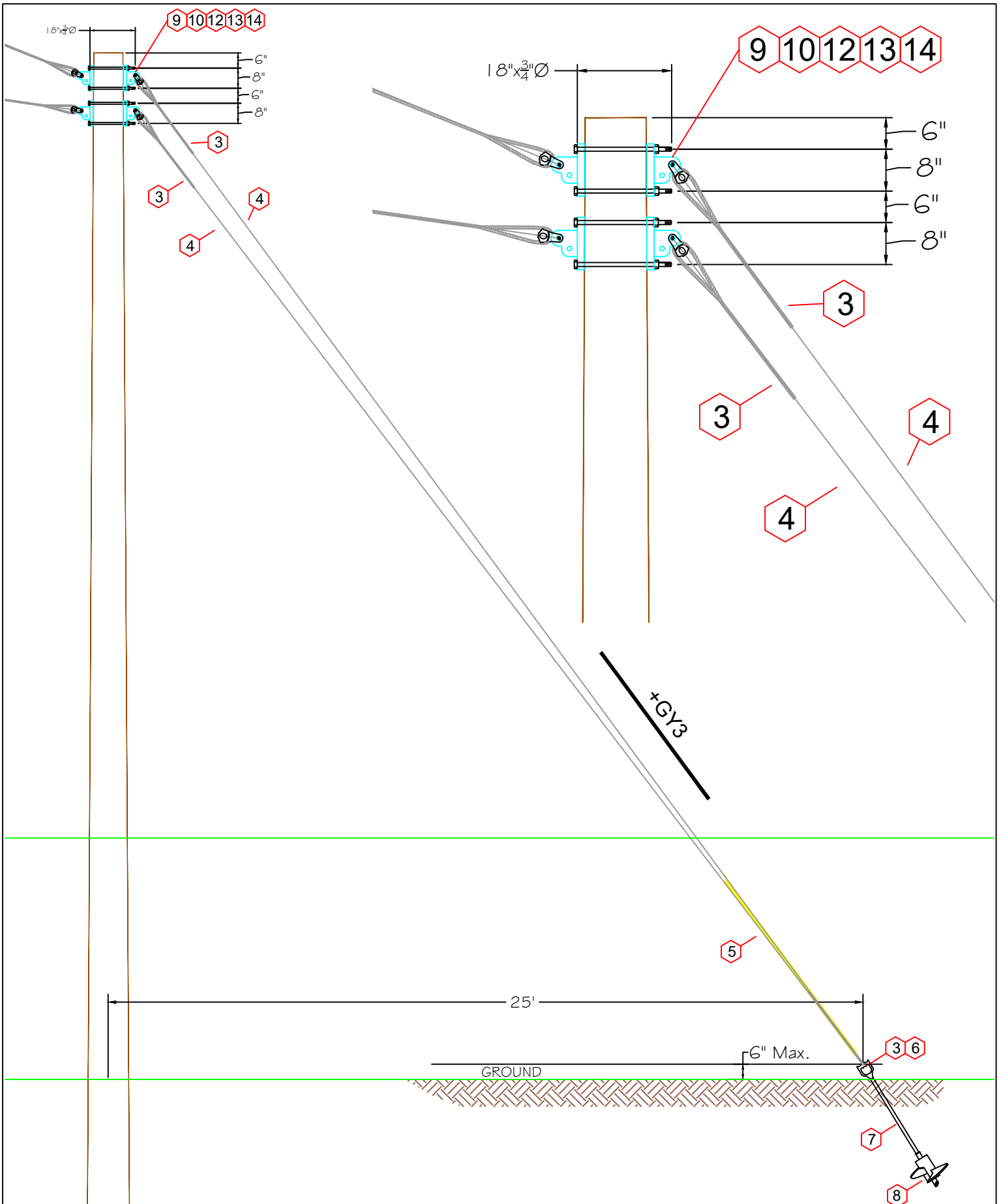
CHK:



PG 5  
OF 7

BEAVER TRANSMISSION POLE REPLACEMENT

CONSTRUCTION SPEC #7



DATE: 1/24/24

REV:

DRAWN: JBP

CHK: DA



PG 6  
OF 7

# BEAVER TRANSMISSION POLE REPLACEMENT CONSTRUCTION SPEC #7



**+GYSP3 / +GY3**

ITEM	DESCRIPTION	QTY	STOCK#
1	GUY STRAIN INSULATOR, 144" FIBERGLASS	2	2552800
2	GUY STRAIN INSULATOR, 96" FIBERGLASS	1	2552600
3	GUY GRIP (PREFORMED) 18M	10	2101000
4	GUY WIRE, 18M	325	2050700
5	GUY GUARD, 8' YELLOW	1	2760100
6	TRIPLE EYE NUT	1	2420100
7	ANCHOR ROD, 7' x 1"	1	2485500
8	SINGLE HELIX ANCHOR, 15"	1	2290100
9	GUY ATTACHMENT, 2-BOLT EYE PLATE	6	2701500
10	MACH BOLT, 18" X 3/4"	4	3041800
11	MACH BOLT, 20" X 3/4"	4	3042000
12	WASHER, SQUARE CURVED 4" x 4"	8	3306000
13	WASHER, DOUBLE COIL LOCK 3/4"	8	3331000
14	CLEVIS THIMBLE	4	2870400

DATE: 1/24/24

REV:

DRAWN: JBP

CHK:



PG 7  
OF 7

BEAVER TRANSMISSION POLE REPLACEMENT

CONSTRUCTION SPEC #7