

**REQUEST FOR BID
BID NUMBER 240801**



ADDENDUM NO. 1

Date: February 8, 2024
Re: LOW INCOME COMMUNITY SOLAR
To: ALL PROSPECTIVE BIDDERS

This Addendum No. 1 forms a part of the Contract Documents and modifies the original bidding documents dated January 24, 2024. This Addendum is issued to clarify, revise, add to, or delete from the original bidding documents. Bidders shall determine the work affected by the Addendum items.

This Addendum consists of:

CLARIFICATION

- 1.) Will the District allow the solar PV to be connected to the existing services instead of having its own dedicated service?
 - a. The District will allow a connection to the existing service at, 112 Idea Place, Sequim, if a production meter is installed and the solar PV AC is wired to the utility supply side of the automatic transfer switch (ATS), protecting the system from parallel operation.
 - b. The District will NOT allow a connection to the existing service at, 104 Hooker Road, Sequim, due to location of the electrical room and limited capacity in CT cabinet.
- 2.) What is the inverter sizing specification?
 - a. The District will allow for 125% capacity overdrive. For example: a 95 kW DC solar array can be connected to a 76 kW inverter or larger.
- 3.) Does the warranty require a representative be on site within 72 hours of a request from the District for 5 years?
 - a. Yes, the requirement for a representative be on site within 72 hours of a request is required for 5 years.
- 4.) What is the District referring to when it states ECU on page 30 of the project manual?
 - a. The ECU is non-specific. The production values will come from the inverter output.
- 5.) What does Structural Engineering Stamp mean in the page 16 of the project manual?
 - a. The structural engineer will recertify both roofs before the installer is given the notice to proceed on the project.
- 6.) Is there a site plan for conduits and layouts at the 104 Hooker Road location?
 - a. Plan documents for the administration building do not give reliable and detailed information about conduits

ADDITION

- 1.) Can the District provide pictures of the inside of the CTs cans and the electrical panels for both locations?
 - a. Yes, see added photos below

112 IDEA PLACE
CT CABINET



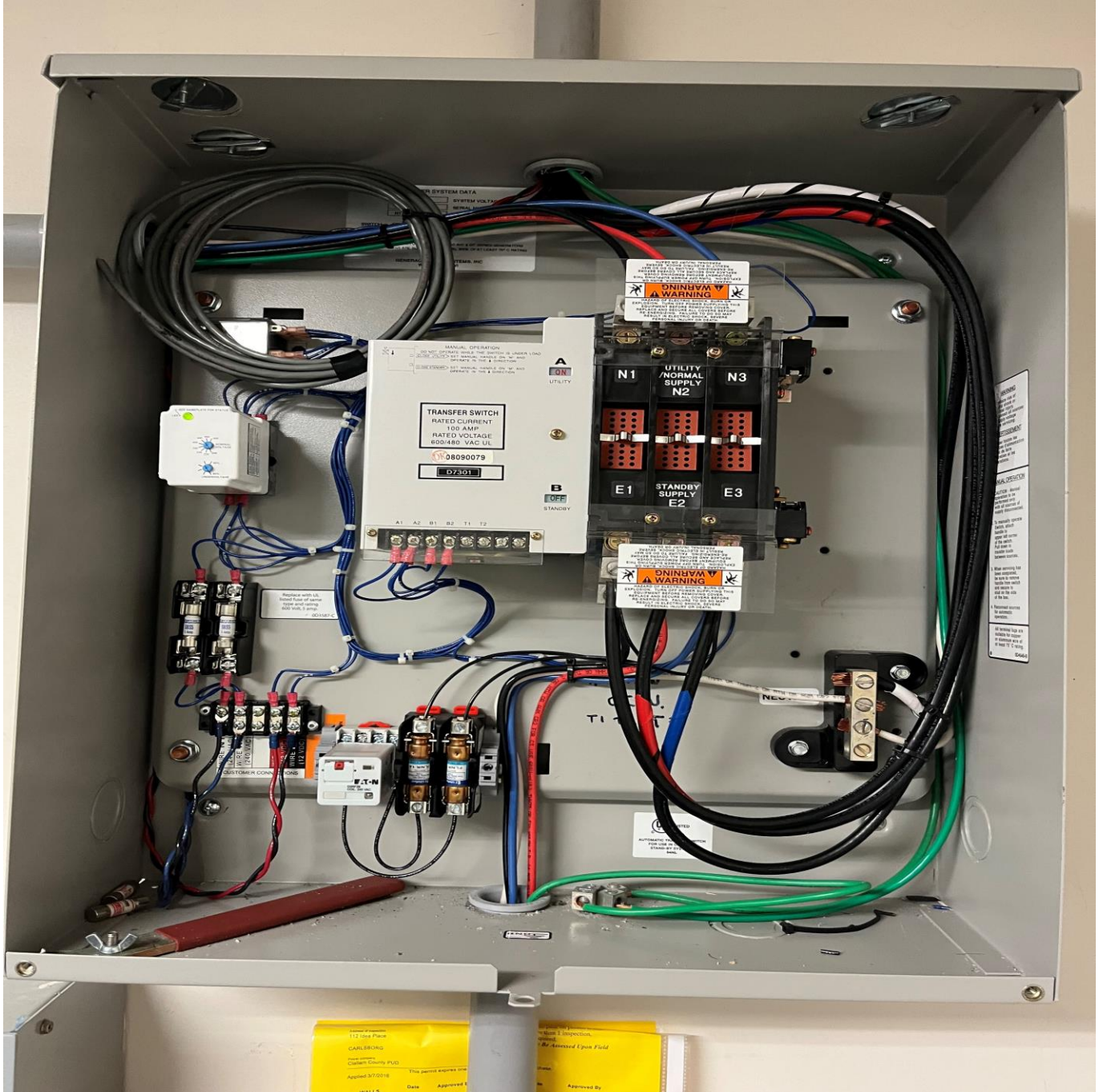
112 IDEA PLACE
PANEL

4S1
480Y/277V 3Ph 4W

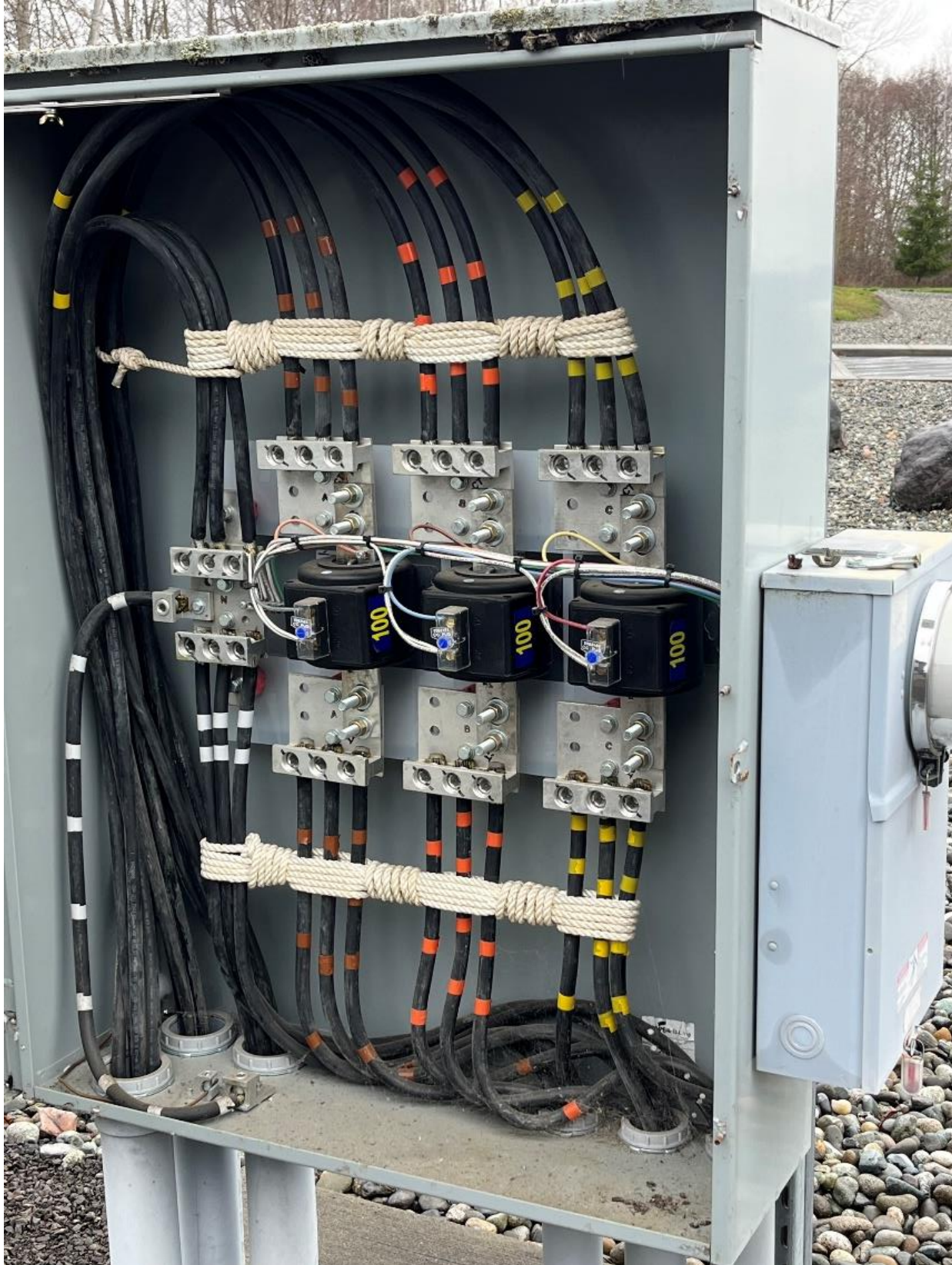
112 IDEA PLACE
PANEL



112 IDEA PLACE
ATS



104 HOOKER ROAD
CT CABINET



This addendum consists of six (6) pages. **THIS ADDENDUM SHEET MUST BE ACKNOWLEDGED ON THE BID PROPOSAL.**