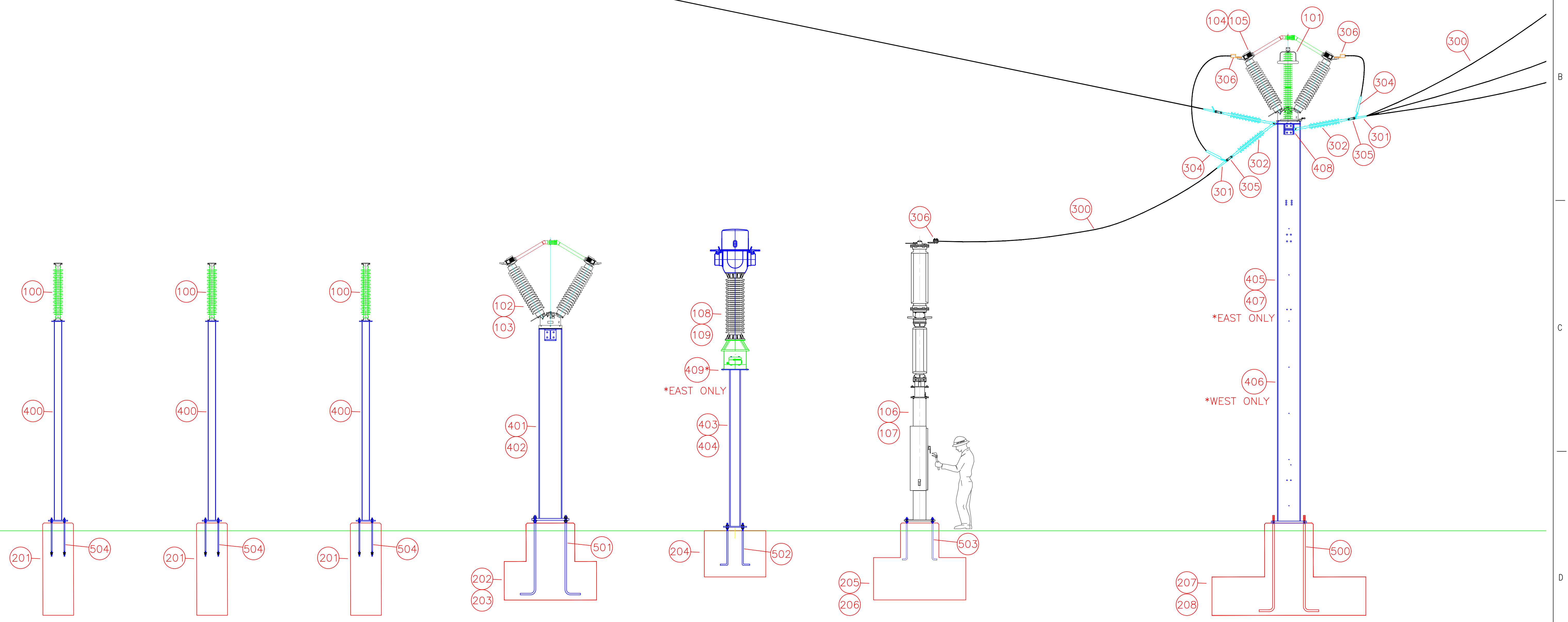



NOTES:
 1. SEE DWG E3-1 FOR BILL OF MATERIALS.

INCOMING BPA
 115KV TRANSMISSION



										DRN	BENP	12/2022		CLALLAM COUNTY PUD LIBERTY STATION GENERAL ARRANGEMENT PROFILE VIEW	JOB NUMBER	REV
										CKD					21-2316	△
0	ISSUED FOR CONSTRUCTION	12/6/23	BENP	BENP				E3-1	EQUIPMENT LIST	SCALE: N.T.S.			DRAWING NUMBER	E2-1-1		
REV	REVISIONS	DATE	DRN	DSGN	CKD	APPD	REFERENCE DRAWINGS			FOR 22x34 DWG ONLY						

BPA 115KV TRANSMISSION

c∅

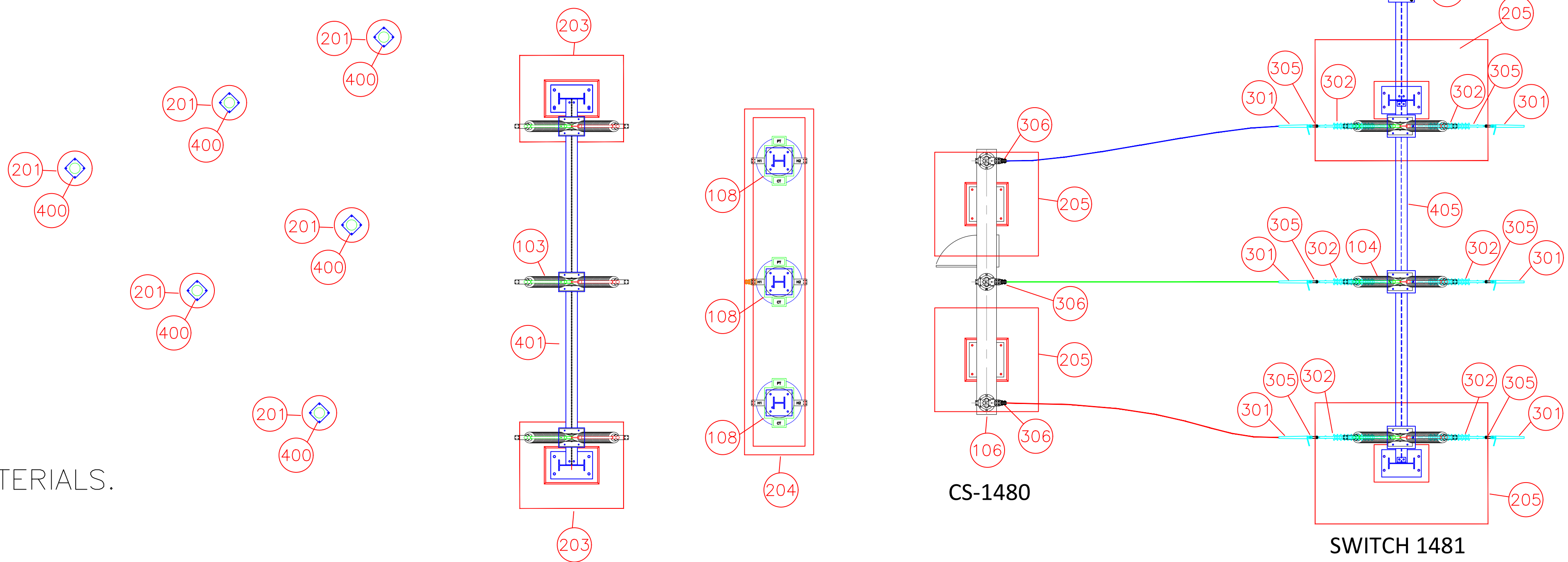
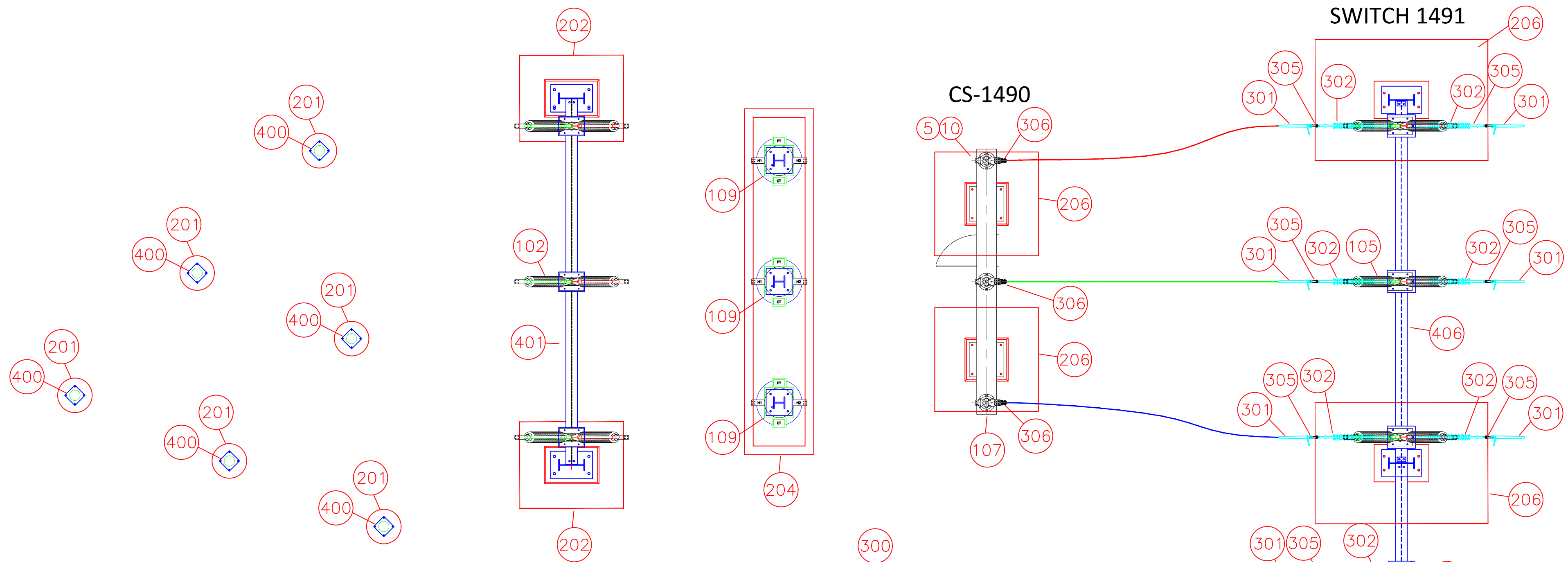
B∅

A∅

SWITCH 1489

SWITCH 1491

CS-1490



SWITCH 1479

SWITCH 1481

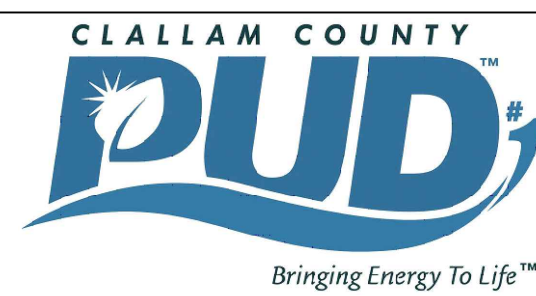
CS-1480

NOTES:

1. SEE DWG E3-1 FOR BILL OF MATERIALS.

0	ISSUED FOR CONSTRUCTION	12/6/23	BENP	BENP				E4-2	STEEL & CONCRETE DETAILS
REV	REVISIONS	DATE	DRN	DSGN	CKD	APPD			REFERENCE DRAWINGS

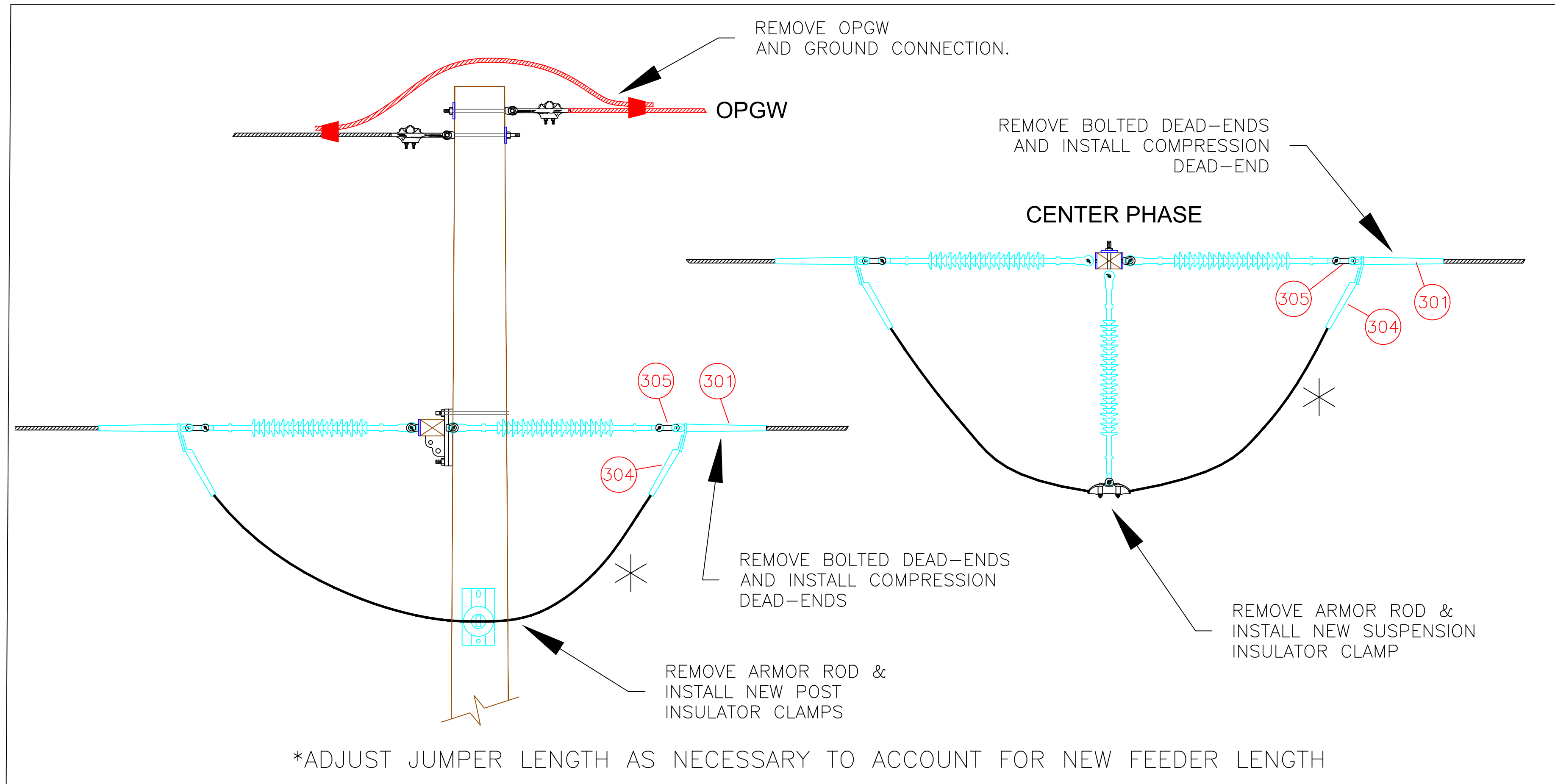
DRN	BENP	2022
CKD		
SCALE:	N.T.S.	
FOR 22x34 DWG ONLY		



CLALLAM COUNTY PUD
LIBERTY STATION
GENERAL ARRANGEMENT PLAN VIEW

JOB NUMBER	REV
21-2316	△
DRAWING NUMBER	
E2-2-2	

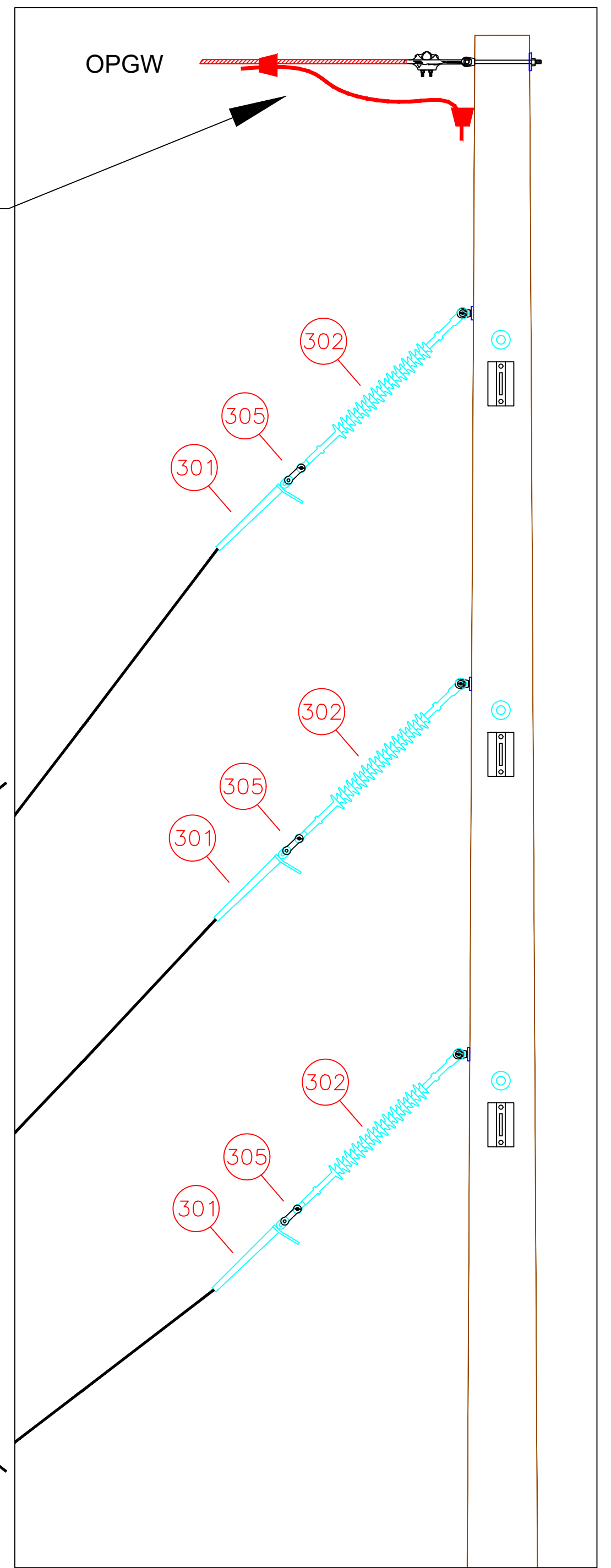
DETAIL A
H-STRUCTURE 3006-143862 & 3006-143863



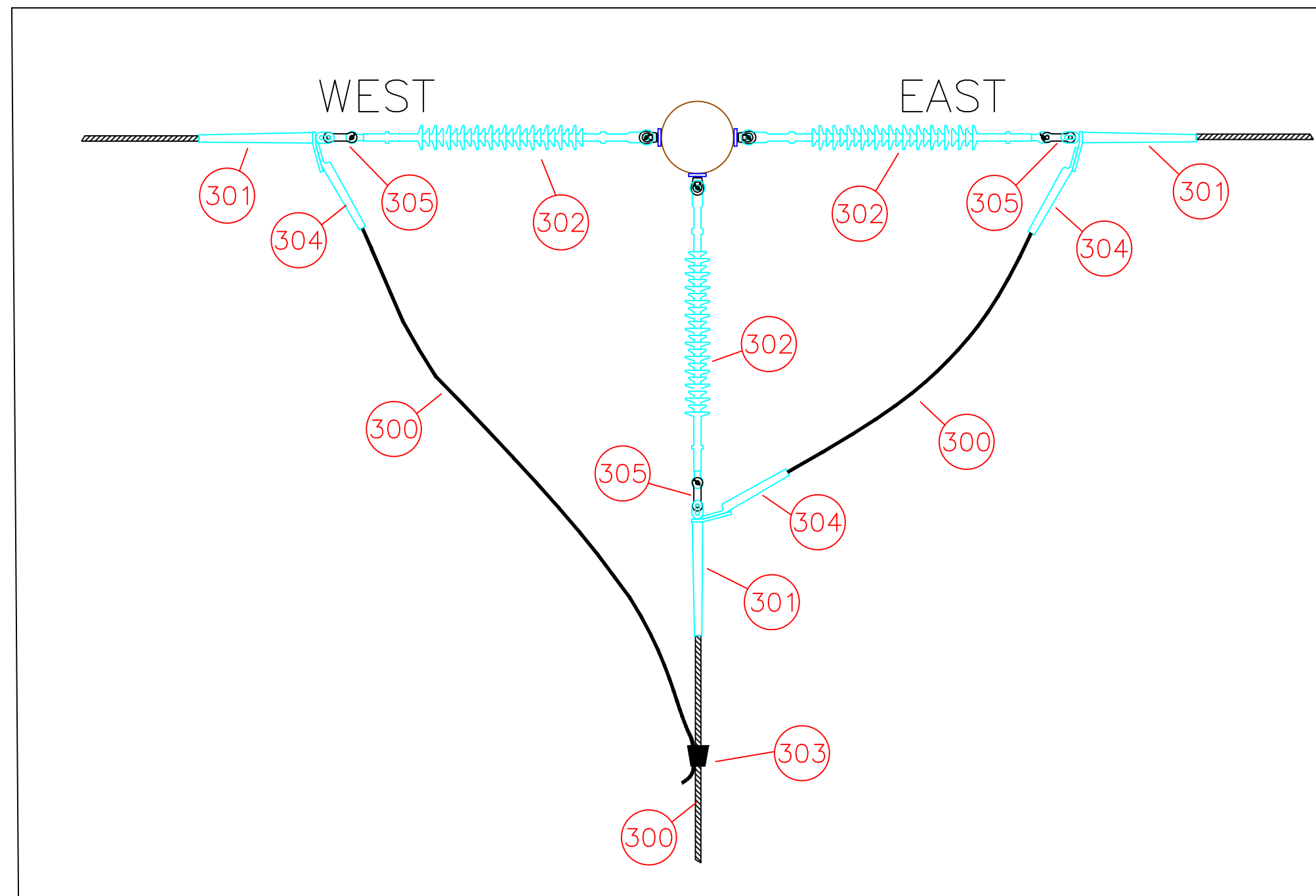
*ADJUST JUMPER LENGTH AS NECESSARY TO ACCOUNT FOR NEW FEEDER LENGTH

REMOVE OPGW AND GROUND CONNECTION. STRUCTURE 300-13169 ONLY.

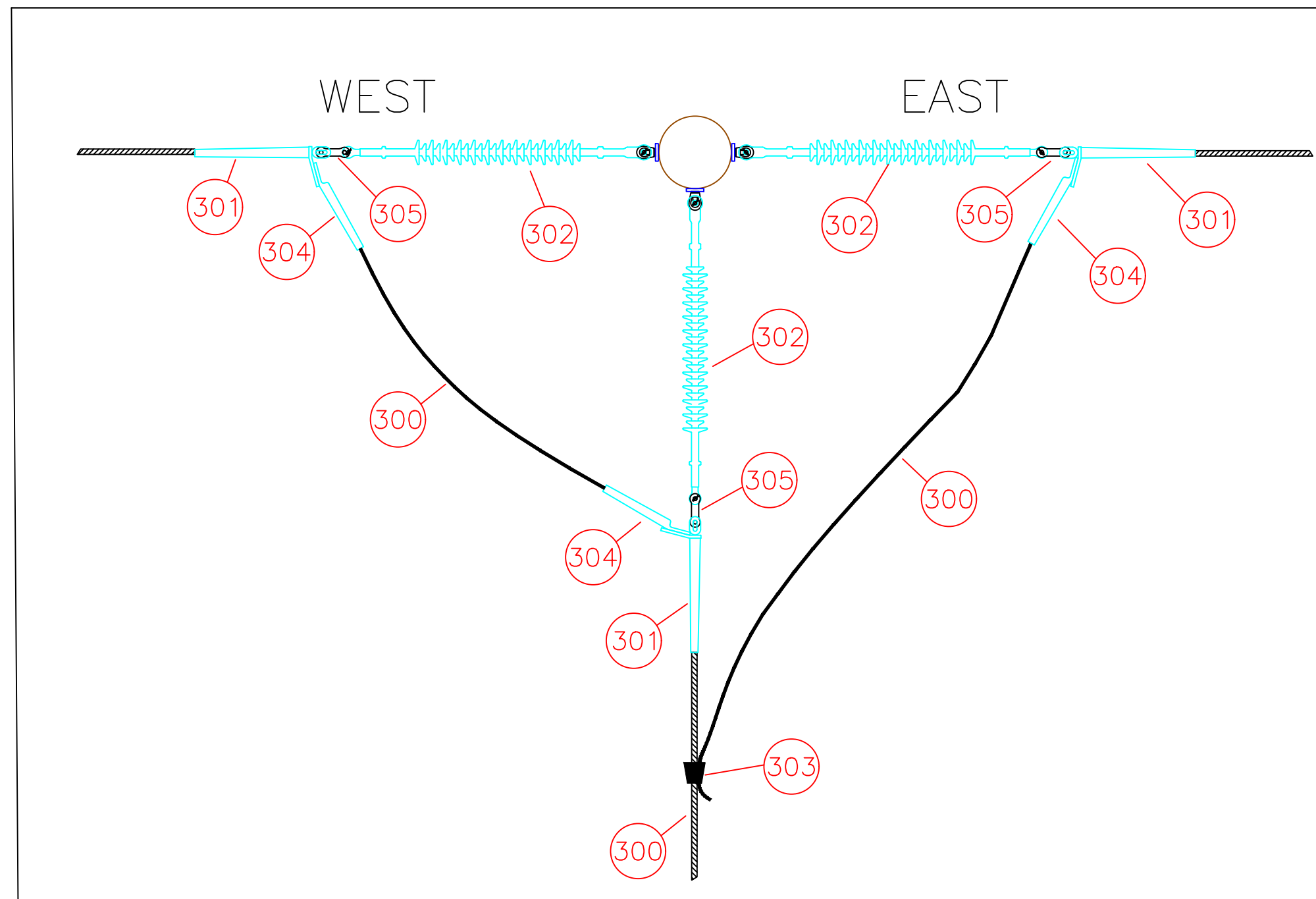
795AAC CONDUCTORS FROM CS-1480 & CS1490



DETAIL B
POLE #3006-113164



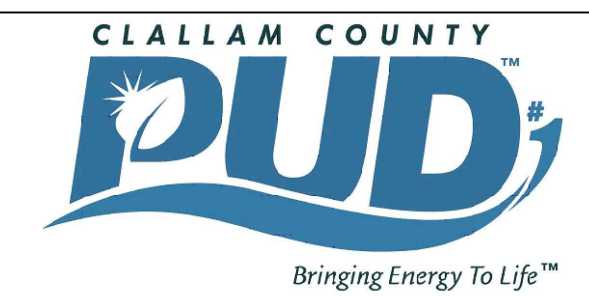
DETAIL C
POLE #3006-113169



DETAIL B
POLE #3006-113164
POLE #3006-113169

0	ISSUED FOR CONSTRUCTION	12/6/23	BENP	BENP				E4-2	STEEL & CONCRETE DETAILS
REV	REVISIONS	DATE	DRN	DSGN	CKD	APPD			REFERENCE DRAWINGS

DRN	BENP	2022
CKD		
SCALE:	N.T.S.	
FOR 22x34 DWG ONLY		



CLALLAM COUNTY PUD
LIBERTY STATION
GENERAL ARRANGEMENT STRUCTURE DETAILS

JOB NUMBER	REV
21-2316	△
DRAWING NUMBER	
E2-2-3	