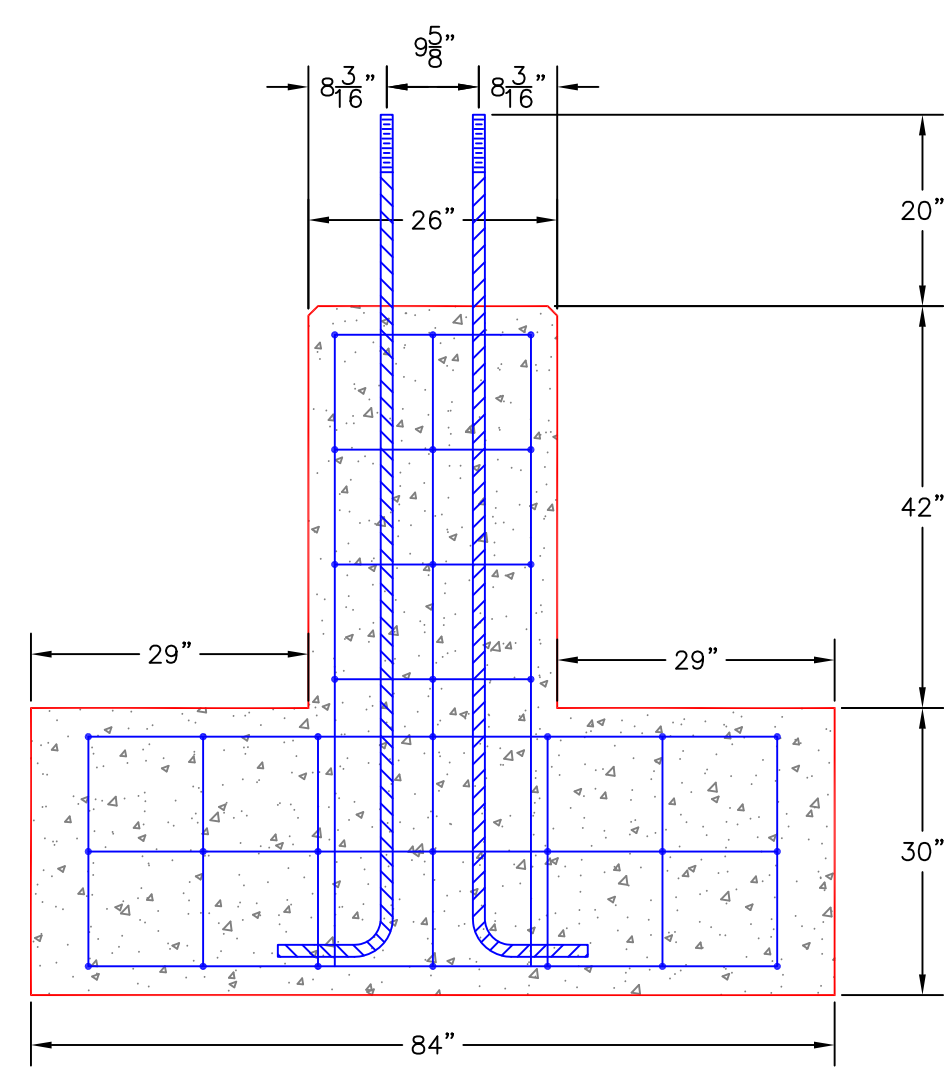
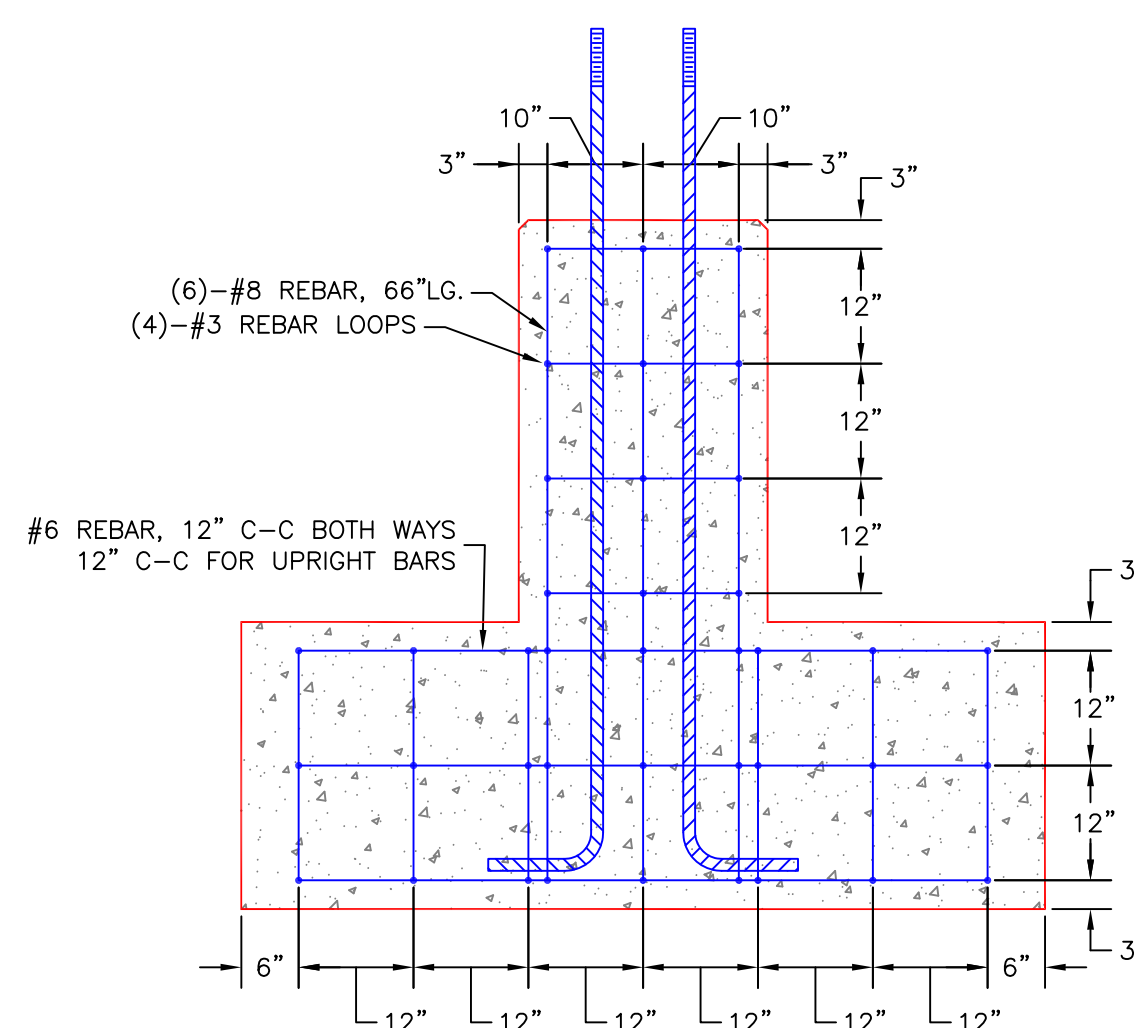


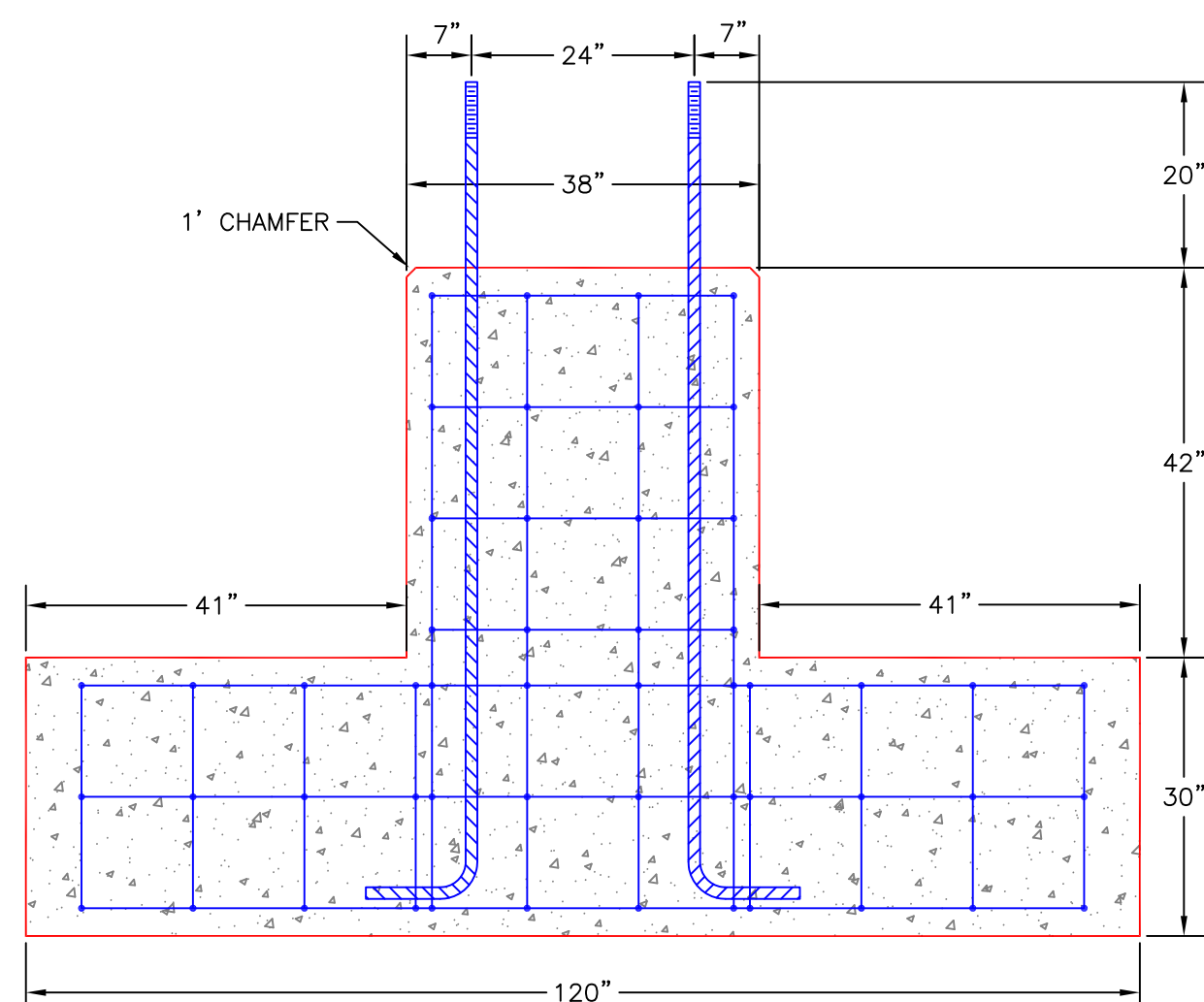
A-FRAME FOUNDATION



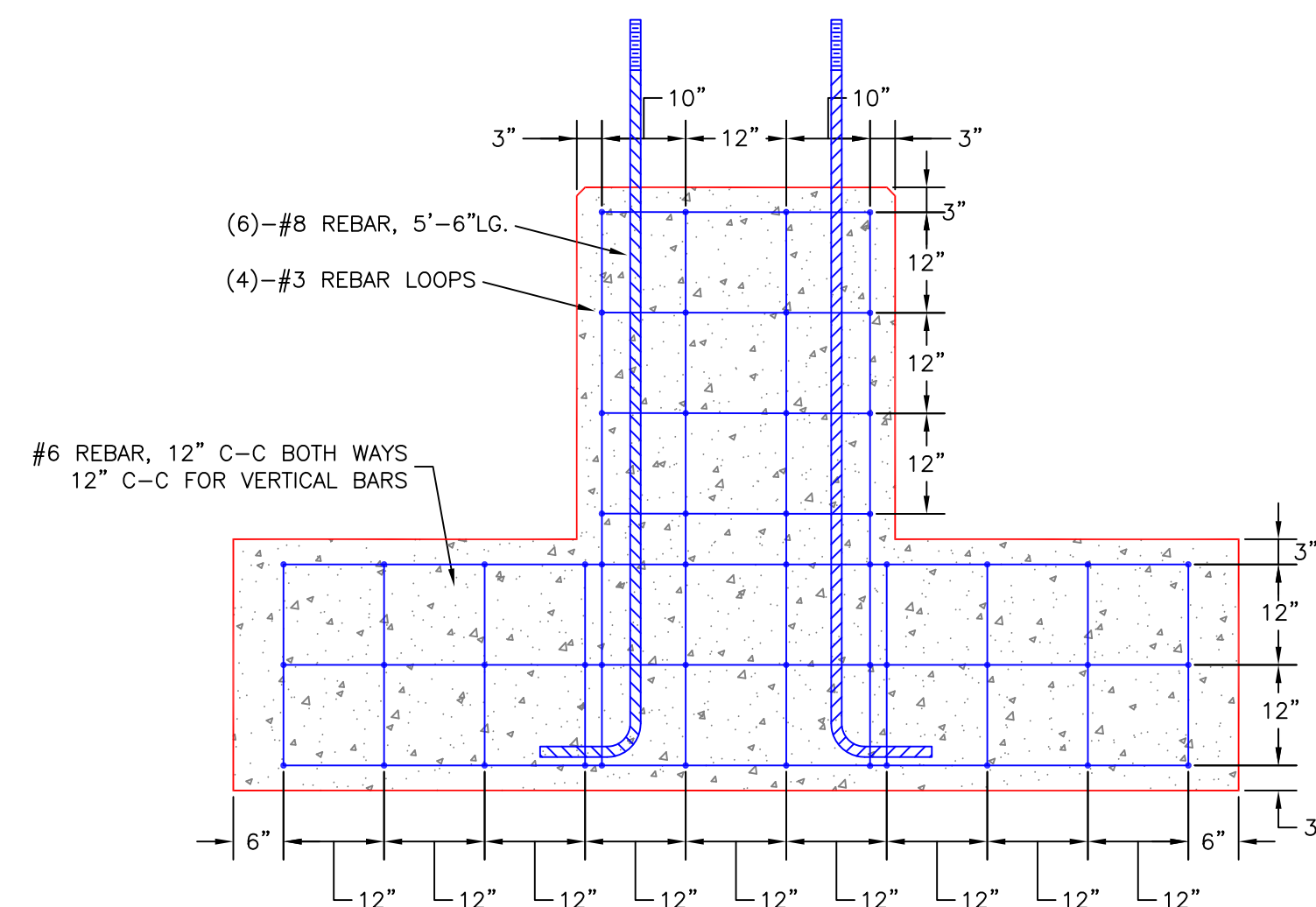
SECTION B-B
(2) REQ'D



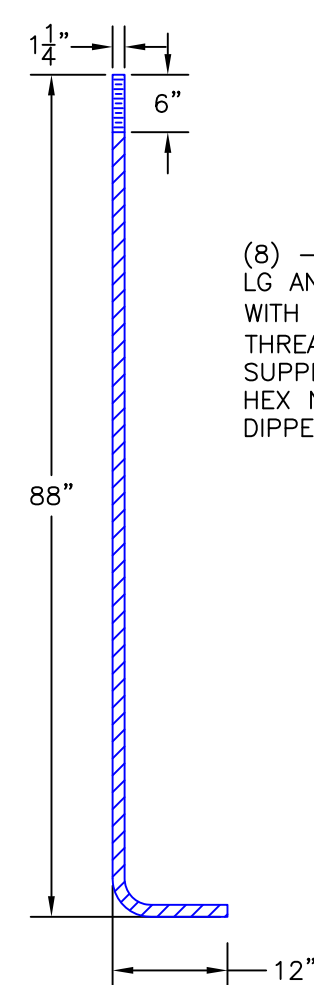
SECTION B-B
REBAR DETAIL



SECTION A-A
(2) REQ'D

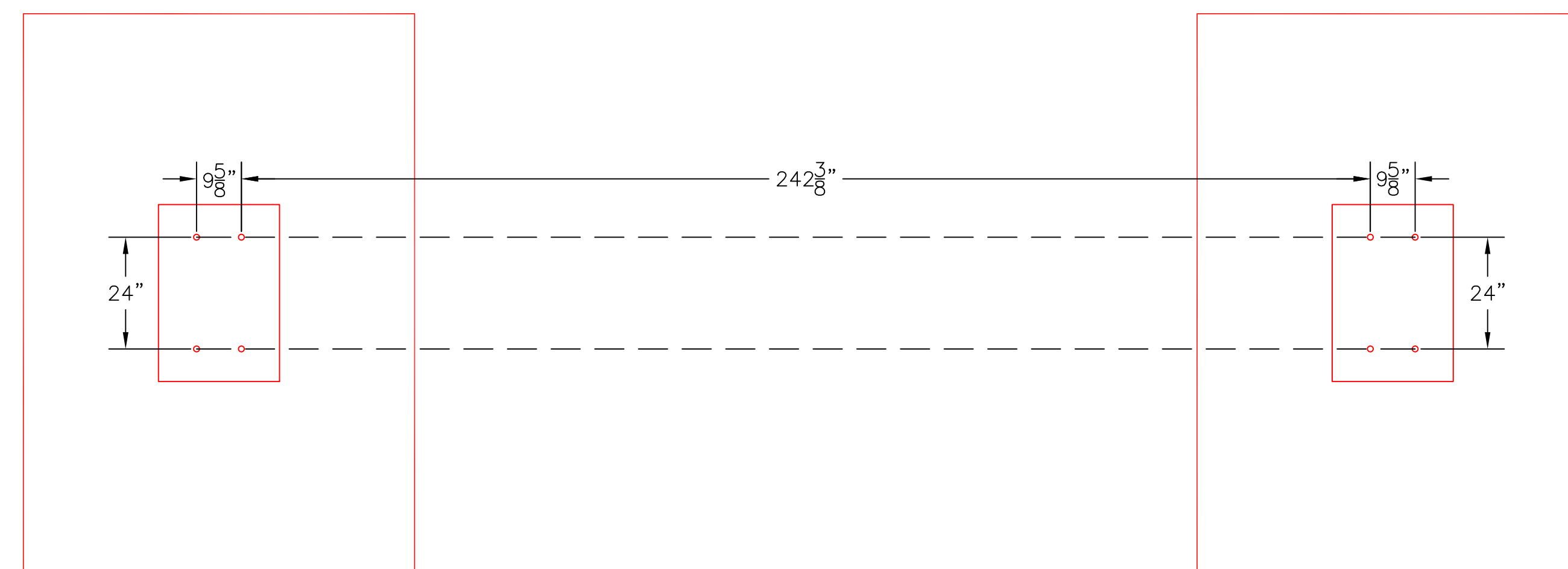


SECTION A-A
REBAR DETAIL



ANCHOR BOLT
(4)/EA REQ'D: (8) TOTAL
PUD WILL SUPPLY ANCHOR BOLTS

(8) - 1-1/4" DIA x 90"
LG ANCHOR J-BOLTS,
WITH 6" HOOK AND 6"
THREADED 1-1/4"-UNC-7
SUPPLIED WITH DOUBLE
HEX NUTS, DOUBLE
DIPPED GALV.



A-FRAME FOUNDATION

A-FRAME FOUNDATION

NOTES:

1. PROVIDE CHAMFERS AS NOTED
2. $f_c = 3000\text{PSI}$
3. $f_s = 40,000\text{ PSI}$
4. ALL ABOVE GRADE SURFACES TO BE TROWEL FINISHED CONCRETE SMOOTH
5. POUR CONCRETE ONLY AFTER DISTRICT REPRESENTATIVE HAS INSPECTED THE FORM TO BE POURED
6. CONTRACTOR SHALL PROVIDE TEMPLATE TO MAINTAIN ALIGNMENT OF STRUCTURE ANCHOR BOLTS WHILE POURING AND DRYING ALL STEEL TO BE UNIFORMLY AND EVENLY SUSPENDED FROM THE TOP OF FORMS. WHEN CONCRETE CAN FIRMLY SUPPORT STEEL, SUSPENSION WIRES TO BE REMOVED TO 2" BELOW CONCRETE SURFACE AND FINAL FINISH APPLIED.
7. ALL STEEL REBAR TO BE GRADE 40.
8. CHAMFER AS NOTED
9. ALL WORK IN CONFORMANCE WITH A.C.I. SPECIFICATIONS LATEST EDITION.
10. PUD TO SUPPLY ANCHOR BOLTS

NOTES:

1. THE DIMENSIONS SHOWN IN THIS DETAIL ARE CRITICAL AND MUST BE MET.
2. SEE ALSO E5-1 FOR MORE SITE CRITICAL DIMENSIONS.
3. QTY (2) OF THESE (2) BASE FOUNDATIONS (EAST & WEST) REQUIRED.

0	ISSUED FOR CONSTRUCTION	12/6/23	BENP	BENP	CKD	APPD	E5-1	SITE PLAN	DSGN	BENP	9/2022		CLALLAM COUNTY PUD LIBERTY STATION EAST/WEST A-FRAME FOUNDATION CONCRETE DETAILS	JOB NUMBER	REV
REV	REVISIONS	DATE	DRN	DSGN	CKD	APPD	REFERENCE DRAWINGS	SCALE:	N.T.S.	21-2316	△				
										DRAWING NUMBER	E4-1				