



Project Manual For:

PUBLIC UTILITY DISTRICT NO 1 OF CLALLAM COUNTY

240801

LOW INCOME COMMUNITY SOLAR

BID DUE BY:

March 5, 2024, @ 2:30 p.m., Pacific Time

BID OPENING:

March 5, 2024 @ 3:00 p.m. Pacific Time

Issued for Bid

January 24, 2024

Table of Contents

PART I	INSTRUCTIONS TO BIDDERS.....	1
	ADVERTISEMENT FOR BID.....	2
	BID SUBMITTAL	4
PART II	SCOPE AND SPECIFICATIONS.....	14
	SCOPE OF WORK AND SPECIFICATIONS	15
	SOLAR PV SYSTEM - Minimum Equipment and Construction Requirements	15
PART III	APPENDIX	18
	SITE PLAN	19
	TEST PROCEDURE DOCUMENT	29
	SIDEWALK SPECIFICATION.....	32
	DRAWING #30	33
PART IV	BID FORMS	34
	BID FORM.....	35
	CERTIFICATION OF COMPLIANCE.....	37
	NON-COLLUSION AFFIDAVIT.....	38
	MANDATORY BIDDER RESPONSIBILITY CHECKLIST	39
	SUBCONTRACTOR RESPONSIBILITY CHECKLIST	40
	BIDDERS' CHECKLIST	41
PART V	CONTRACT FORMS.....	42
	CONTRACT	43
PART VI	EXHIBITS.....	51

PART I INSTRUCTIONS TO BIDDERS

ADVERTISEMENT FOR BID

INVITATION TO BID
BID NUMBER 240801

Publication on January 24, 2024

BID FOR:

PUBLIC UTILITY DISTRICT NO. 1 OF CLALLAM COUNTY

General Contractors are invited to submit a single bid for

LOW INCOME COMMUNITY SOLAR

This project is for the design, supply, permitting, install, and commission of two (2) PV solar rooftop systems on two (2) separate existing roofs. Bids must include all aspects of design through turn-key installation outlined in the scope of work and instructions to bidders and Rooftop locations under this bid are as follows:

- Administration Building, 104 Hooker Road, Sequim, WA 98382
+/- 2% of 95KW and 3-phase 277/480 VAC
- Substation Shop, 112 Idea Place, Sequim, WA 98382
+/- 2% of 42KW and 3-phase 277/480 VAC

(the "Work"). The project shall be performed by one general contractor and bidders may not elect to bid only a portion of the project. The submitted bid is to reflect the total price for the design, supply, permitting, and installation at both locations. Public Utility District No. 1 of Clallam County (hereinafter called the "District") will obtain structural engineering certification necessary for the project to proceed, all other permit requirements are the responsibility of the bidder.

Sealed bids with bid security will be received by the District at its Main office at 104 Hooker Road, Sequim, WA 98382 until 2:30 p.m., Pacific time on March 5, 2024. Sealed bids may be submitted by mail and sent to PUD No. 1 of Clallam County, Attn: Contracts Coordinator, 100 Hooker Road, Sequim, WA 98382. If mailed, bid must be in a sealed bid envelope with the name and address of the bidder and bid number on the sealed envelope and then placed inside the delivery envelope to be mailed. Bids must be filled out in ink or typewritten. No alterations or interlineations will be permitted, unless made before submission, initialed, and dated. At 3:00 p.m. Pacific time, a public bid opening will take place in the Boardroom at the District's Main office at 104 Hooker Road, Sequim.

There will be a Pre-Bid Conference for this project on February 5, 2024, 10 a.m. Pacific time, at 110 Idea Place, Sequim, WA. For inquiries contact (primary) Xanthius Christenson, by phone at 360-565-3527, or by email at xchristenson@clallampud.net. Contact (secondary) Colin Young, by phone at 360-565-3250, or by email at cyoung@clallampud.net. All questions, clarifications, or requests must be received no later than February 26, 2024, 12 noon Pacific time.

Free-of-charge access to project Bid Documents (plans, specifications, addenda) is provided by going to the online platform, <https://mrscrosters.bonfirehub.com/portal/?tab=openOpportunities>. By registering to view and download the Bid Documents on this online platform, you will be automatically registered on the planholder's list. The content is also available for viewing and free downloading at the District website <https://clallampud.net/contractorsprojects/>. The District website does not automatically register viewers to the planholder's list, bidders should contact

contracts@clallampud.net to be added to the planholder's list. Bidders that do not register will not be automatically notified of addenda and will need to periodically check the platform or the District website for addenda(s) issued on this project. Contact Contracts Coordinator at (360) 565-3243 for registration on the plan holders list or should you require assistance with access to either website or registration on the plan holders.

Bids must be submitted on the forms provided and as described in the Instructions to Bidders. No bidder may withdraw a bid submitted for a period of 60 days after the day of bid opening. Each bid shall be accompanied by bid security in the form of deposit or bid bond in the amount of not less than five percent (5%) of the total bid amount. Performance and Payment Bonds in the amount of one hundred percent (100%) of the contract amount must be provided by the successful bidder prior to notice to proceed.

PUBLIC UTILITY DISTRICT NO. 1
OF CLALLAM COUNTY

Ken Hayes, Secretary

Date

BID SUBMITTAL

Sealed bids will be received, opened, and read aloud at the time and place indicated in the Advertisement for Invitation to Bid unless the District has, for good cause, continued the date of opening bids to another day or has canceled the Invitation to Bid. Bidders, their authorized agents, and other interested parties are invited to be present.

After submitting a bid to the District, a Bidder may withdraw its bid if the District receives a request from a Bidder to withdraw the bid prior to the bid submission deadline. Any request to withdraw a bid which is received after the bid submission deadline will not be considered. The Bidder may revise such a bid and resubmit it if the revised bid is received prior to the bid submission deadline.

After a Bidder has withdrawn its bid as described in the paragraph above, submitting a bid to the District, a Bidder may revise its bid if the District receives the revised bid on the required Bid Form prior to the bid submission deadline, and the revised bid shall be submitted in a properly marked and sealed envelope prior to the bid submission deadline. Any bid modification which is received after the bid submission deadline will not be considered.

The District reserves the right to modify the terms or cancel the Invitation to Bid at its sole discretion, the District reserves the right to reject any or all bids, and to waive as an informality any immaterial irregularities in the bids received. No commitment on the part of the District shall exist under this Invitation To Bid (ITB) until a Contractor receives official written confirmation from the District of Award.

By submitting a bid, each Bidder accepts its terms and conditions. In addition, by submitting a bid each Bidder waives all claims, rights, demands, and the benefit of any provisions of any statute, rule of law, or regulation that might adversely affect the rights of the District under this Invitation to Bid.

Bids shall be irrevocable for sixty (60) days after bid opening. All documents submitted in response to this bid are to remain the property of the District.

Pre-Bid Meeting

A voluntary pre-bid meeting, recommended to attend, has been scheduled for this Project. The meeting will be held February 5, 2024, at 10 a.m. Pacific time, at 110 Idea Place, Sequim, WA 98382. For more information on the pre-bid meeting please contact the Project Manager, Xanthius Christenson at 360-565-3527, or by e-mail xchristenson@clallampud.net.

Questions and Addenda

The District assumes no responsibility for any conclusions or interpretations made by Bidder based on the information made available by the District. Should a Bidder find conflicts, errors, discrepancies, or omissions in the Drawings, Specifications, Bid Manual, or Contract Documents, or should Bidder be in doubt as to their meaning or interpretation, Bidder shall at once notify the District in writing. Questions, clarifications, or requests must be received no later than February 26, 2024, 12 noon Pacific time, to be answered. If appropriate, the District will send explanations, interpretations, or modifications to all bidders by written addenda. Oral explanations and interpretations by the District shall not be binding. All addenda issued shall be incorporated into the Contract Documents.

Bid Security

Bidder must submit with the bid either a Certified Check or Cashier's Check payable to the order of PUBLIC UTILITY DISTRICT NO. 1 of CLALLAM COUNTY, for a sum not less than five percent (5%) of the total amount of the bid, or accompanied by a bid bond for a sum not less than five percent (5%) of the total amount of the bid with a corporate surety licensed to do business in the State of Washington, conditioned that the Bidder will pay to the District as liquidated damages the total amount specified in the Bond unless entering into a contract in accordance with the bid and furnishes a Performance and Payment Bond(s) for not less than One Hundred percent (100%) of the contract price within ten (10) days of being notified as being the successful bidder, as required by Section 54.04.080 R.C.W.

If a bid is not accepted, the Certified Check, Cashier's Check, or Bid Bond will be returned within 60 days of the Bidder furnishing same, except that of the successful Bidder shall be retained until a contract is entered into and a Performance and Payment Bond(s) furnished as mentioned above.

If the Bidder fails to enter into a contract and furnish the Bond(s) within ten (10) days of the date of being notified as being the successful Bidder, the check or Bid Bond and the amount thereof shall be forfeited to the District. No Bidder shall be permitted to withdraw a bid within a period of 60 days after the actual date on which the bids were opened.

Bid Irregularities or Errors

The District reserves the right to waive non-material irregularities or minor errors in any bid, if it appears to the District that such irregularities or errors were made through inadvertence. Any such irregularities or errors so waived must be corrected on the Bid in which they may occur prior to the execution of any contract that may be awarded thereon.

Rejection of Bid

The District reserves the right to reject any or all bids, or any portion of any bid.

Examination of Site and Requirements

Prior to the submission of the Bid, the Bidder shall make and be deemed to have made a careful examination of the site(s) of the Project and of the Contract Documents on file with the District, and shall become informed as to the location and nature of the proposed construction, the transportation facilities, the kind and character of the soil and terrain to be encountered, the kind of facilities required before and during the course of the Project, general local conditions, and all other matters that may affect the cost and the time of completion of the Work.

Oversight in regard to the Documents or site information for which a reasonable site investigation would disclose, shall in no way relieve the Bidder from any obligations with respect to its bid or to the Contract. No claim for additional compensation will be allowed which is based upon a lack of knowledge of the Contract Documents or familiarity of site that reasonable site investigation would disclose.

Submission of a bid will constitute an incontrovertible representation by the Bidder that all requirements of this section has been complied with, thoroughly examined, and that the Bidder is familiar with site conditions, and acknowledges contract documents are sufficient in scope and

detail to indicate and convey an understanding of all terms and conditions for performance of the Work.

Mandatory Bidder Responsibility

It is the District's intent to award a contract to the responsible contractor with the lowest quote. Pursuant to RCW 39.04.350(1), in order to be deemed responsible, the contractor must satisfy the following criteria at the time the quote is submitted:

1. Have, at the time of bid submittal, a certificate of registration in compliance with chapter 18.27 RCW; a plumbing contractor license in compliance with chapter 18.106 RCW, an elevator contractor license in compliance with chapter 70.87 RCW, or an electrical contractor license in compliance with chapter 19.28 RCW, as required under the provisions of those chapters;
2. Have a current Washington State unified business identifier ("UBI") number;
3. If applicable, have industrial insurance coverage for the contractor's employees working in Washington as required in Title 51 RCW; an Employment Security Department number as required in Title 50 RCW; and a state excise tax registration number as required in Title 82 RCW;
4. Not be disqualified from bidding on any public works contract under RCW 39.06.010 or 39.12.065(3);
5. If bidding on a public works project subject to the apprenticeship utilization requirements in RCW 39.04.320, not have been found out of compliance by the Washington State Apprenticeship and Training Council for working apprentices out of ratio, without appropriate supervision, or outside their approved work processes as outlined in their standards of apprenticeship under Chapter 49.04 RCW for the one-year period immediately preceding the date of the Bid solicitation;
6. Have, at the time of bid submittal, received training or have been deemed exempt by the Department of Labor and Industries on the requirements related to public works and prevailing wage under this chapter and chapter 39.12 RCW;
7. Within the three-year period immediately preceding the date of the solicitation, not have been determined by a final and binding citation and notice of assessment issued by the Washington Department of Labor and Industries or through a civil judgment entered by a court of limited or general jurisdiction to have willfully violated, as defined in RCW 49.48.082, any provision of Chapter 49.46, 49.48, or 49.52 RCW

As required in Title 50 Revised Code of Washington, contractor shall have an Employment Security Department number. As required by Title 82 RCW contractor shall have an excise tax registration number. The District may require a contractor to submit documentation demonstrating compliance with the criteria.

Supplemental Bidder Responsibility

In addition to the Mandatory Bidder Responsibility Criteria referenced above, the Bidder must also meet the following relevant Supplemental Bidder Responsibility Criteria applicable to the Project. As evidence the Bidder meets the Supplemental Bidder Responsibility Criteria, bidders must submit the required following documentation to the District at the bid submittal deadline. The District reserves the right to waive this requirement if the low bidder is known to the District as qualified to perform the Work and to request such documentation from other bidders.

1. Bidder shall provide Owner a list of Completion of Similar Projects:

- a. Criterion:
Bidder shall have performed and completed a minimum of three (3) projects of similar scope and size within the last five (5) years. The District has determined that “similar scope and size” to this project means projects that have the following characteristics:
 - A minimum 40kVA 3-phase, Commercial/Industrial Roof Mounted System Installation
- b. Documentation:
Bidder must submit a list of a minimum of three (3) completed projects in the preceding five (5) years containing the following information about each project:
 - Owner’s name and contact information for the Owner’s representative;
 - Awarded contract amount;
 - Final contract amount at completion of the project and change order details;
 - Description of the scope of work and how the project is similar to this project
 - The Bidder’s assessment of its performance of each project, including but not limited to the following:
 - o Management of safety and safety record;
 - o Timeliness of performance;

In evaluating whether the projects were “successfully completed”, the District may conduct reference checks for the apparent low and second low bidder whose bids are under consideration for award and evaluate the owner’s assessment of the Bidder performance, quality control, management of safety, timeliness of performance, use of skilled personnel, and management of subcontractors.

To request modification of Supplemental Bidder Responsibility Criteria, during the open bidding period, a bidder may request the District in writing for modification to the Supplemental Bidder Responsibility Criteria no later than February 26, 2024, 12 p.m. Pacific Time. The District shall evaluate any such requests and if a decision is made by the District in its sole discretion to modify the criteria, such modification shall be communicated to all Bidders and plan holders via the issuance of an addendum to the bidding documents. If the District determines not to modify the Supplement Responsibility Criteria, the District shall notify the requesting bidder of its decision in writing.

If the District determines the lowest bidder does not meet the Supplemental Bidder Responsibility Criteria above and is therefore not a responsible bidder, the District shall notify the bidder in writing with the reasons for its determination. If the Bidder disagrees with this determination, it may appeal the determination within 24 hours of receipt by presenting in writing additional information. The District will consider the additional information before issuing its final determination. If the final determination affirms the Bidder is not responsible, the District will not execute a contract with any other bidder until two (2) business days after the Bidder that was determined to be not responsible has received written final determination. For the purpose of this subsection, the date of the District’s transmission of the District’s determination(s) by facsimile or electronic mail to the bidder at the facsimile number or e-mail address provided by the bidder in its bid shall constitute the date of receipt by the bidder of the written notices provided for herein.

Non-Assignment

Neither the contract nor any work to be performed under the contract or any part hereof may be assigned by the Successful Bidder without the prior written consent of the District. Such written

consent however shall not under any circumstances relieve the Successful Bidder of its liabilities and obligations under the contract and the granting of such consent shall be within the sole and unfettered discretion of the District.

Conflict of Interest

Each Bidder shall make full disclosure of any actual or potential conflict of interest arising from any existing business or personal relationships with any personnel of the following (each, a “Conflicted Person”):

- a. Any employee of PUD #1 of Clallam County;
- b. Any member of PUD #1 of Clallam County Board of Commissioners
- c. Any family member of any such employee or board member; or
- d. Any business entity controlled by or otherwise not at arm’s length to any one or more of any such employee or board member or family member.

Without limiting the foregoing, details should be provided of any direct or indirect pecuniary interest of any conflicted person in the supply of the services contemplated by this Invitation to Bid. Disclosure of any such actual or potential conflict of interest shall be made in writing with the Bidder’s response.

Award of Bid and Timeframe

The formal acceptance by the Owner, through an award by its Board of Commissioners, of the lowest responsive bid of a responsible bidder that is within the budget available for the project, will be in the form of a written notice of award of public works contract to the Bidder issued by the Owner. **Upon formal acceptance by the Owner of the bid, the bid shall be deemed accepted by the Bidder unless acceptance is rejected by the Bidder and/or the bid or terms of the work are modified by either party within 30 days of the Owner’s acceptance of the bid.**

Execution of Contract

Within ten (10) calendar days after the notice of award date, Bidder shall submit two (2) signed originals of the Contract (see [Part V](#)); certificate of insurance and endorsements as required in the Contract Document. The Contractor shall furnish performance and payment bond(s) in the penal sum not less than one hundred percent (100%) of the bid cost of the Work, on an appropriate form, with a surety or sureties acceptable to the District. When the performance and payment bond(s) requirement has been met, the Contractor will be given a notice to proceed. In the event that the surety or sureties on the performance and payment bond(s) delivered to the District shall at any time become unsatisfactory to the District, the Contractor shall, upon request by the District, deliver to the District another or an additional bond(s).

The bonds must be signed by an approved surety (or sureties) that:

1. Appears on the current Authorized List in the State of Washington published by the Office of the Insurance Commissioner; and
2. Has a current rating of at least A-VII in A.M. Best’s Key Rating Guide or is included in the U.S. Department of the Treasury’s Listing of Approved Sureties (Circular 570).

If the successful Bidder fails to execute contract after notice of award has been given, fails to execute the Contract or provide insurance documentation and bonds as required within the time specified, Owner may revoke award of the Contract and the bid guaranty may be retained by Owner.

Payments and Retainage

Progress payments will be made by the District to the Contractor within 30 days of receipt of an invoice, provided the District Representative verifies the accuracy of the billing or corrects it as mutually agreeable to the District and the Contractor. All invoices shall be mailed to Clallam County Public Utility District No. 1, Attention: Contracts Coordinator, P.O. Box 1000, Carlsborg, WA 98324.

Pursuant to RCW 60.28.011, the District will reserve a contract retainage of five percent (5%) of the moneys earned by the Contractor as a trust fund for the protection and payment of (i) the claims of any person arising under this Contract; and (ii) the state with respect to taxes, increases, and penalties imposed pursuant to Titles 50, 51, and 82 RCW which may be due from the Contractor.

Sales Tax

Contractor shall pay all sales, consumer, use and other similar taxes required to be paid in accordance with the laws of the State of Washington.

Liquidated Damages

Time is of the essence on this Contract. Construction of the Project must be completed on or before October 1, 2024. As liquidated damages, and not as a penalty, Contractor will pay District \$200.00 per day and the District will deduct \$200.00 from the quoted cost for each calendar day after October 1, 2024, that Project completion is delayed due to Contractor or any of Contractor's subcontractors, suppliers, or anyone for whom Contractor is responsible.

The District shall have the right to deduct from and retain out of such monies which may then be due, or which may become due and payable to the Contractor, if the amount due and to become due from the District to the Contractor is insufficient to pay in full any such liquidated damages, the Contractor shall pay to the District the amount necessary to effect such payment in full. Provided, however, that the District shall promptly notify the Contractor in writing of the manner in which the amount retained, deducted, or claimed as liquidated damages was computed.

Insurance

The Contractor shall, at its own expense, carry in an insurance company or companies and under policies of insurance acceptable to and approved by the District, the following insurance with limits not less than shown on the respective items:

a. Worker's Compensation

To the limit required by the laws of the State of Washington.

b. Comprehensive General Liability and Property Damage Insurance

This insurance shall include coverage for Contractor's Contingency Liability Insurance covering Subcontractor's Liability, Contractual Liability Insurance, Completed Operations Liability Insurance, and Automobile Liability Insurance covering owned, non-owned, and hired units.

Minimum Coverage Limits:

Bodily Injury \$1,000,000 each person

Property Damage \$1,000,000 each occurrence

 \$2,000,000 aggregate

Umbrella Coverage \$2,000,000

- c. All policies of insurance providing coverages required under paragraph "b" above shall name Public Utility District No. 1 of Clallam County as additional named insured with a cross liability clause and provide that no cancellation or material changes in the policies shall become effective unless thirty (30) days prior written notice of such cancellation or change is furnished to the District by registered mail.

Prior to commencement of any work hereunder, the Contractor shall provide the District with evidence of Worker's Compensation Insurance and with a Certificate of Insurance showing the District named as additional insured.

Hours of Work

Normal working hours are from 6:30 a.m. to 5:00 p.m., Monday through Thursday, unless otherwise authorized by the District. The lunch period shall be observed from 11:30 a.m. to 12:00 p.m. unless unusual circumstances prevail.

Upon request, the District may authorize the Contractor to terminate this four-day workweek schedule and revert to a five-day workweek. Under such an arrangement, work outside of the District's normal working hours may be restricted to activities that do not require the immediate presence or availability of District Inspector or staff.

The Contractor shall comply with all provisions of WAC 296-127-022, "Overtime According to RCW 49.28.065" and applicable regulations pertaining to overtime pay.

The Contractor shall observe holidays that correspond with District holidays on the same day as observed by the District. The Contractor shall conform to normal working hours and a five-day work week for any week the District observes a holiday.

Payment of Prevailing Wages

The Contractor will be required to pay prevailing wages on this Project and comply with the most recent applicable prevailing wage rate(s) of the State of Washington Department of Labor and Industries (**Exhibit A**). Please note that those rates included for occupations listed in **Exhibit A** are as furnished by the State of Washington, but it shall be the Contractor's responsibility to verify current rates. This information may not be all-inclusive; any other occupation used on the Project but not listed in this information must comply with the most recent applicable prevailing wage rate.

A State-approved "Statement of Intent to Pay Prevailing Wages" must be filed with the State of Washington before payment can be made of any sums due on this contract. Upon completion of the contract, an "Affidavit of Wages Paid" must be filed and approved with the State of Washington. Consistent with WAC 296-127-320, the Contractor and any subcontractor shall submit a certified copy of payroll records if requested.

By submitting each Application for Payment, Contractor certifies that prevailing wages have been paid in accordance with the approved pre-filed Statement(s) of Intent to Pay Prevailing Wages. Copies of the approved intent statement(s) shall be posted on the job site with the address and

telephone number of the Industrial Statistician of the Department of Labor and Industries where a complaint or inquiry concerning prevailing wages may be made.

In compliance with Chapter 296-127 WAC, Contractor shall pay to the Department of Labor and Industries the currently established fee(s) for each Statement of Intent to Pay Prevailing Wages and/or Affidavit of Wages Paid submitted to the Department of Labor and Industries for certification.

Contractor's Proprietary Information

The Contractor acknowledges the District is subject to chapter 42.56 RCW, the Public Disclosure Act, and this Contract shall be a public record as defined in RCW 42.56.040 through 42.56.550. Any specific information submitted to the District and claimed by the Contractor to be confidential or proprietary, must be clearly identified as such by the Contractor. To the extent consistent with chapter 42.56 RCW, the District shall maintain the confidentiality of all such information marked or identified as confidential or proprietary. If a request is made to view the Contractor's proprietary information and the District intends to release the information, the District will notify the Contractor of the request and notify the Contractor of the date that such records will be released to the requester. It will be the responsibility of the Contractor to obtain any necessary court order enjoining that disclosure. If the Contractor fails to obtain the court order enjoining disclosure, the District will release the requested information.

Termination for Convenience

The District may at any time, for any reason, and without cause and without prejudice, terminate all or part of the Contractor's services and work at the District's convenience. Upon seven days' written notice to Contractor, the Contractor shall immediately discontinue work, services, placing of material orders, facilities, and supplies in connection with the performance of this Contract. In such case, Contractor shall be paid for (without duplication of any items):

1. Completed and acceptable Work executed in accordance with the Contract Documents prior to the effective date of termination, including fair and reasonable sums for overhead and profit on such Work;
2. Expenses sustained prior to the effective date of termination in performing services and furnishing labor, materials, or equipment as required by the Contract Documents in connection with uncompleted Work, plus fair and reasonable sums for overhead and profit on such expenses;
3. All claims, costs, losses, and damages (including but not limited to all fees and charges of engineers, architects, attorneys, and other professionals and all court or arbitration or other dispute resolution costs) reasonably incurred in settlement of terminated contracts with Subcontractors, Suppliers, and others; and
4. Reasonable expenses directly attributable to termination and actually incurred.

Contractor shall not be paid on account of loss of anticipated profits or revenue or other economic loss arising out of or resulting from such termination.

The District shall have title to all Work performed and materials purchased through the date of termination. Contractor shall not be entitled to any claim or claim of lien against the District for any additional compensation or damages in the event of such termination and payment.

Default

If, in the sole judgment of the District, the Contractor, in connection with any Work performed hereunder, fails in any respect to carry on the work with promptness and diligence or violates any of the terms or conditions of this Contract, such refusal, failure, or violation shall constitute a default by the Contractor under this Contract and, in such event, the District may give the Contractor twenty-four (24) hours notice to remedy such default. Upon the failure of the Contractor to remedy such default within such time, the District will be relieved of any further obligations hereunder and in addition to all other rights and remedies in law or equity may cancel this Contract without any obligation or liability on the District whatsoever except as to payment for Work already properly performed by the Contractor.

District's Right to Audit

The District shall have the right to audit all Contractor records pertaining to the Work performed hereunder, during, and up to one year after completion of, the Work. Should the Contractor refuse to allow the District to audit its records, the District may terminate the Contract and deny the opportunity to bid on future District projects.

Debarment, Suspension, and Other

Contractor certifies to the best of its knowledge and belief that it and its principals:

- Are not presently debarred, suspended, proposed for debarment, declared ineligible, or voluntarily excluded from covered transactions by any Federal department or agency;
- Have not within a three year period preceding the award of this Contract been convicted of or had a civil judgment rendered against it for commission of fraud or a criminal offense in connection with obtaining, attempting to obtain, or performing a public (Federal, State or local) transaction or a contract under a public transaction; violation of Federal or State antitrust statutes; or commission of embezzlement, theft, forgery, bribery, falsification or destruction of records, making false statement, or receiving stolen property;
- Are not presently indicted for otherwise criminally or civilly charged by a government entity (Federal State, or local) with commission of any of the offenses enumerated in any paragraphs within this Section; and
- Have not within a three-year period preceding the award of this Contract had one or more public transactions (Federal, State, or local) terminated for cause or default.

Contractor or Third-Party Worker Retirement Status Verification

The parties hereto acknowledge that under Title 41 of the Revised Code of Washington, the District is obligated to report to the Washington Department of Retirement Systems any retirees in its employ, including contractors and subcontractors and their workers, who retired from certain Washington State retirement systems. Failure to report could result in a financial liability to the District. Accordingly, the Contractor agrees to and shall report to the District the retirement status of all of its workers, subcontractors, and subcontractors' workers who will be performing services for the District under this Agreement. The Contractor shall be responsible to pay any financial liability imposed upon the District by the Washington Department of Retirement Systems for pension overpayments resulting from the Contractor's failure to properly report to the District such retirement status. In the alternative, the Contractor may provide to the District the Social Security numbers of all its workers, subcontractors, and subcontractors' workers who will be performing services for the District under this Agreement, and the District shall undertake to verify the retirement status of

those workers. In such event, the Contractor shall be responsible to pay any financial liability imposed upon the District by the Washington Department of Retirement Systems for pension overpayments resulting from the Contractor's failure to provide proper Social Security numbers for each such worker.

Sub-Contractors

Each Bidder shall provide to District, with the bid, a list of all subcontractors to be used on the Project. Proposed Subcontractors must be licensed to do business in the State of Washington. Bidders shall provide a listing on the included form of all subcontractors regardless of value.

The list of subcontractors shall include (1) the name, phone numbers and business address of each Subcontractor proposed to perform or render service for a portion of the Work, and (2) the portion of the Work to be performed by each proposed subcontractor. No change may be made to the listing after delivery without the written consent of the District.

Dispute Resolution

Any dispute that arises out of the interpretation, performance, enforcement, or any other aspect of this Contract shall be resolved by submitting the same to binding arbitration, which shall proceed according to the Washington arbitration act, Chapter 7.04A RCW, and shall be conducted within Clallam County, Washington; provided, however, that each party shall select a nominating person within ten (10) days of notice of the dispute from one party to the other. The two nominating persons shall then meet and promptly select the arbitrator. If, within thirty (30) days after receipt of the notice of the dispute, the nominating persons are unable to select an arbitrator, the arbitrator shall be selected by a Superior Court Judge of Clallam County. The parties shall require a written decision by the arbitrator as a condition of the selection of the arbitrator. The prevailing party as determined by the arbitrator shall be entitled to its reasonable attorney fees and costs associated with the arbitration. The parties shall share equally the arbitrator's fee and costs. Venue for any action brought on the arbitration award, including enforcement of such award, shall be in the Superior Court of Clallam County, and such action shall be governed by application of the laws of the state of Washington. The prevailing party in any such action on the arbitration award shall be entitled to its reasonable attorney fees and costs associated with such action. This Agreement shall be governed by and construed and enforced in accordance with the laws of the state of Washington without application of the principals of conflicts of laws.

PART II SCOPE AND SPECIFICATIONS

SCOPE OF WORK AND SPECIFICATIONS

This project is for the design, supply, permitting, install, and commission of two (2) PV solar rooftop systems on two (2) separate existing roofs. Bids must include all aspects of design through turn-key installation outlined in the scope of work and instructions to bidders. Rooftop locations under this bid are as follows:

- Administration Building, 104 Hooker Road, Sequim, WA 98382
+/- 2% of 95KW and 3-phase 277/480 VAC
- Substation Shop, 112 Idea Place, Sequim, WA 98382
+/- 2% of 42KW and 3-phase 277/480 VAC

The project shall be performed by one general contractor and bidders may not elect to bid only a portion of the project. The submitted bid is to reflect the total price for the design, supply, permitting, and installation at both locations. The District will obtain structural engineering certification necessary for the project to proceed, all other permit requirements are the responsibility of the bidder.

SOLAR PV SYSTEM - Minimum Equipment and Construction Requirements

General

- The project consists of two locations (See PART IV- Appendix, Site Plan):
 - 104 Hooker Rd, Sequim, WA 98382
 - 112 Idea Pl, Carlsborg, WA 98324
- The system at 104 Hooker Rd will be +/- 2% of 95KW and 3 phase 277/480 VAC
- The system at 110 Idea Pl will be +/- 2% of 42KW and 3 phase 277/480 VAC

Solar PV Modules

- Solar PV modules shall be UL1703 listed.
- Solar PV modules must have a 10-year warranty on a minimum of 90% nameplate energy production and 25-year warranty on minimum of 80% nameplate energy production.
- All warranties must be documented in advance and be fully transferable to Buyer.

Inverters

- Inverters shall be UL1741 SA listed and IEEE 1547-2018 or greater listing with an efficiency of 95% or higher.
- Inverters must carry a minimum 10-year warranty.
- All warranties must be documented, in advance and be fully transferable to Buyer.
- Inverters shall have a DC disconnect

Balance of System Equipment

- All power generation and transmission equipment must be UL listed for its designed use.
- Construction must comply with current adopted State Building Code, which encompasses:
 - 2018 International Building Code (or most recently adopted in Clallam County)
 - 2017 National Electric Code (NEC) (or most recently adopted in Clallam County)

- All other relevant state and national codes.
- Contractor is responsible for conducting all required building.
- Each proposed PV system shall include, at a minimum, one AC disconnect for safety and maintenance concerns that is defined as lockable, visible open that isolates PV system from Grid.
- All wiring materials and methods must adhere to industry-standard best practices.
- Material requirements:
 - Racking components, Fasteners and hardware throughout system shall be stainless steel or material of equivalent corrosion resistance.
 - Unprotected steel will not be used in any components.
- There must be a 5-year warranty for all workmanship

Interconnection

- System interconnection must comply with NEC and the District interconnection policy and must be approved by the District and the Authority Having Jurisdiction (AHJ)'s Clallam County Building Department.
- Interconnection points will be transformer secondary bus.
- All placards required by District, the AHJ, the Utility, and/or State Solar Initiative program must be provided and installed by contractor.

Monitoring and Reporting Systems

- The district will provide the meter for metering generation of Solar PV system.
- The district will require that the contractor provide web hosting and historical data retention for five (5) years.
- Contractor must work with the District to determine best location of communications interconnection. The District will provide an ethernet connection at the inverters.

System Design and Permitting

- For each site, within 90 days of notice to proceed, contractor shall create construction plan set which includes at a minimum:
 - Site overview
 - Detailed array layout with stringing configuration
 - Mounting and racking details
 - Details of electrical transmission showing conduit routing and location of electrical enclosures, conduit support details, and enclosure mounting details
 - Electrical single-line diagram
 - Construction project plan with timeline
- All proposed system designs/changes and construction techniques must be approved by the AHJ's Building Department and the District.
- The contractor will apply for the building permits and electrical permits that are required for each system location.
- District shall provide structural PE stamp verifying the integrity of the existing facility to handle additional weight load of proposed PV system within 60 days of awarded bid and before the notice to proceed.
- Roof-mounted array layouts shall be designed to provide minimum of three (3) feet of walking access around the perimeter of the roof and convenient access to existing roof-

mounted HVAC equipment in addition to any applicable setbacks for access, safety, and smoke ventilation required by the AHJ.

- Trenching will be required of the contractor and must adhere to the Districts policy. (See [Part III-Appendix, Drawing #30](#))
- Both locations have either a pavement cut or cement cut that will be required. The contractor will repair with a pavement patch and or concrete repair ([See Part III- Appendix, Sidewalk Spec](#)).
- Wire loss in DC circuits to be < 1.5%.
- Wire loss in AC circuits to be < 1.5%.

Documentation and Process Control

- In addition to construction requirements listed above, contractor will be required to:
 - Apply for and receive interconnection approval from the local Utility for proposed PV systems. (Fees will be waived)
- Provide Operations & Maintenance training to District staff.
- Contractor shall be required to respond to warranty related issues not affecting production within 72-hours of notification.
- Provide As-Built drawings of PV system, which must include finalized module layout and stringing chart or stringing diagram.

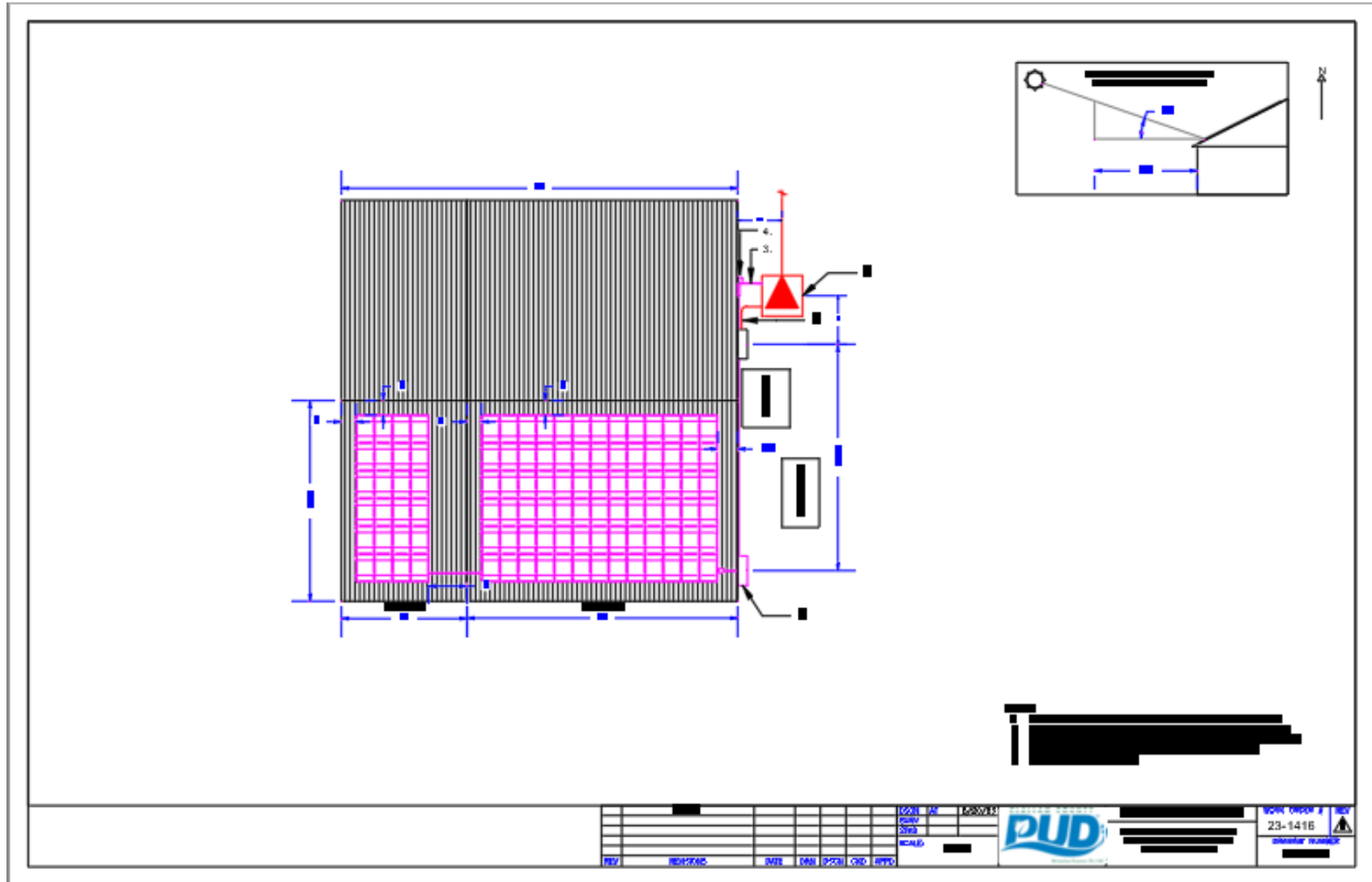
PV System Testing & Commissioning Procedure

- Commissioning is to verify the installation completeness and performance of the system being installed prior to system sign-off.
- Contractor shall document all testing results for approval and submittal to the District.
- Contractor shall provide dispositions for any variances in test results and proposed corrective actions in writing.
- Contractor shall have completed the following tasks prior to the testing/commissioning inspection by the District.
 - Complete installation.
 - Install all required labeling.
 - Verify that the installation is safe.
 - Received AHJ final approval.
- Once the Contractor has completed these tasks, the Contractor shall schedule the following tasks with the District:
 - District's inspection of installation completeness.
 - Initial system startup and interconnection to grid.
 - Verification of system performance.
- Prior to system energization and testing, the District will perform a visual inspection to verify installation completeness, robustness, and that installation is adequate for interconnection to the grid. Any issues found shall be corrected by the Contractor prior to system testing.
- All test procedure shall be in uniform with ([See Part III-Appendix, Test Procedure Document](#))

PART III APPENDIX

SITE PLAN

Sub Shop Meter placement surrounding



SUB SHOP 2



SUB SHOP 3



SUB SHOP 4



Orange box is approximate meter location

Distance is approximately 12' from location to inside transformer box

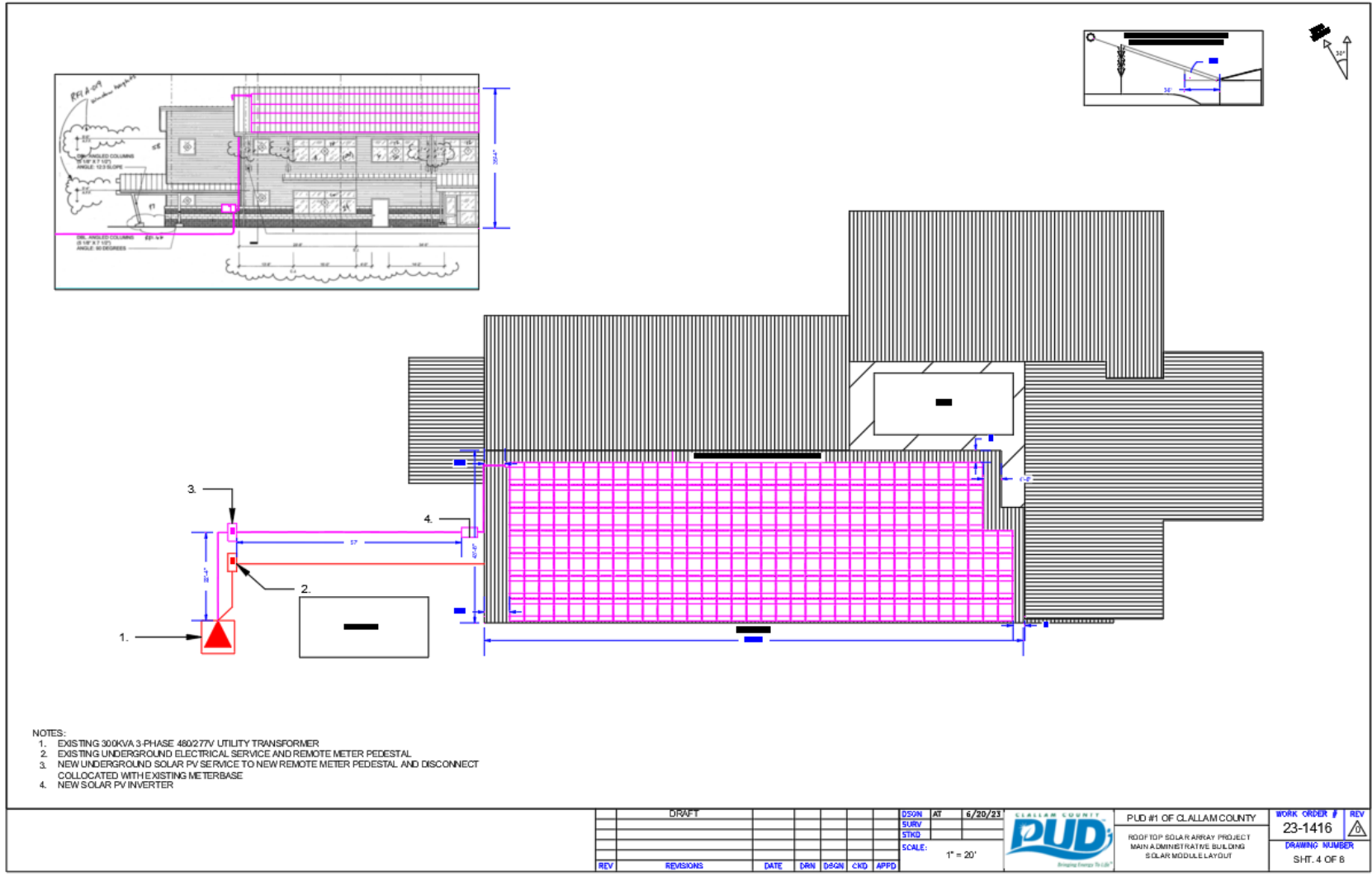
SUB SHOP 5



Orange box is approximate meter location

Distance is approximately 12' from location to inside transformer box

Admin Building meter location



ADMIN 2



Approximate new meter location

Approximately 11' from meter to transformer

Approximately 65' from meter to side of building

ADMIN 3



Approximate new meter location

Blue line is Irrigation line

Approximately 11' from meter to transformer

Approximately 65' from meter to side of building

ADMIN 4



This is the sidewalk that will have to be cut and replaced
Blue line is a 6" drainage line below the concrete

ADMIN 5



Conduit and Inverter suggested route

TEST PROCEDURE DOCUMENT

Initial System Start-up

All overcurrent devices (AC & DC) and disconnects shall be open at the start of testing. Once the main disconnect has been closed, the only inverter shall be grid tied at the time during testing. All strings shall be fully grid tied during the data acquisition testing phase.

PV module protective film shall not be removed until initial startup. This is to protect the modules from damage during construction and to reduce the electrical hazards on the job site. Once the film has been removed and the panels allowed to acclimate for the manufacturer's specified time period the following tests shall be performed:

- 1) Verify main disconnect is closed.
- 2) Verify DC disconnects are open.
- 3) Verify inverter string feeder breaker is closed and all others are open.
- 4) With Inverter DC disconnect open:
 - a. Verify correct V_{dcOC} and polarity at each DC disconnect.
 - b. Verify correct V_{acOC} at Inverter.
- 5) With Inverter DC disconnect closed:
 - a. Verify correct V_{dc} and polarity at each DC disconnect.
 - b. Verify correct V_{acOC} at Inverter.
 - c. Verify I_{mp} for inverter.
 - d. Verify correct V_{ac} , I_{ac} , and P_{ac} at Inverter.
- 6) Once the parameters for the inverter have been verified to be correct, close the DC disconnects for the inverter and verify V_{ac} , I_{ac} , and P_{ac} for the home run.
- 7) Open inverter feeder breaker.

Note: The Contractor will recheck all questionable test values and provide troubleshooting as needed.

Data Collection Verification

Once all the modules and inverters have been verified to be operating within expected parameters, testing of the data collection system can take place.

- 1) Setup and input any necessary information into the ECU (registration, serial numbers, etc.) and set unit for inverter detection as required.
- 2) Grid tie the inverters until active.
 - a. Verify all DC disconnects are closed.
- 3) Wait for the manufacturer's recommended time period to allow the ECU to detect the inverter.
- 4) Verify that the inverter has been cataloged by the ECU and telemetry is being received.
- 5) Train District personnel in using the interface to verify production and perform basic troubleshooting.
 - a. ECU Troubleshooting testing shall include turning a string off, disconnecting an inverter, and disconnecting a PV Module.

Performance Verification

As ideal conditions are not likely to exist during startup/testing to determine if the system is capable of functioning at the rated capacity, the following approximation shall be used.

Measurements shall be taken over a period of a minimum of 3 days, twice per day at 10 a.m. and 3 p.m. Contractor is responsible for additional test periods as required to demonstrate adequate system performance.

The approximation used for expected system performance for given non-ideal environmental conditions, PE, can be calculated by the following:

$$PE = P_Ref \times (1 + Y \times (T - T_ref)) \times G / G_ref$$

- P_Ref= the electrical power output of the solar cell or PV module under standard test conditions (STC)
- Y= the temperature coefficient (cell temperature factor) of the solar cell or module. It describes how the electrical output changes with temperature.
- T= the actual operating temperature of the cell or module.
- T_ref= the reference temperature at which the cell or modules electrical output is defined.
- G= the actual solar irradiance on the cell or modules' surface.
- G_ref= the reference solar irradiance under which the cell or modules electrical output is defined.
- A minimum of 5 irradiance and temperature readings shall be taken at each testing session and the average utilized in the calculation. Readings shall be taken at 30 second intervals.

The actual production values indicated at the ECU must be documented at the same time the temperature and irradiance measurements are taken in order to present a fair comparison. An average of the actual production values shall also be used.

Should the estimated versus actual production differ by 5% or more, the Contractor shall perform troubleshooting to determine the cause and correct it or provide a disposition as to why the variance exists.

Testing and Commissioning Results Submittal

The Contractor shall tabulate test results in an easily understandable format. Any necessary checklists or forms required to document testing information shall be developed and provided by the Contractor. At a minimum the following test results shall be submitted to the District for approval.

Initial System Startup:

- Vdc_{OC} and Vac_{OC} values with DC disconnect open.
- Vdc, Imp, Vac, Iac, and Pac values with DC disconnect closed.
- Vac, Iac, and Pac values for each home run.

Data Collection Verification:

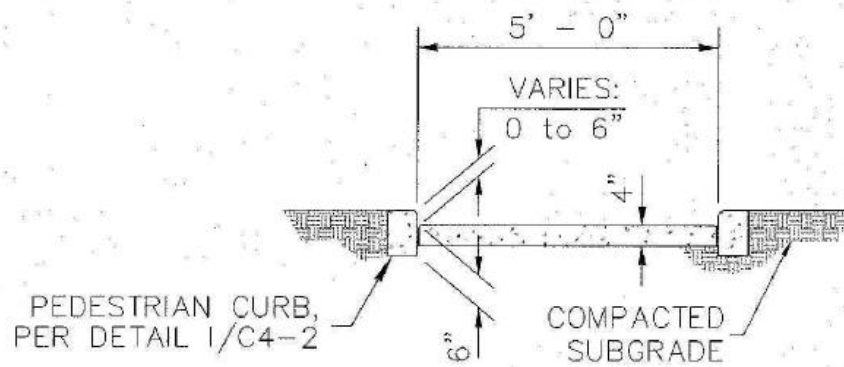
- Inverter Serial Numbers with positional references within array.

Performance Verification:

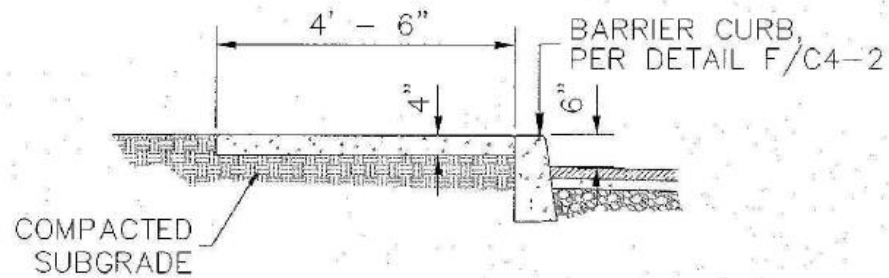
- Date and time of measurements
- Irradiance and Module Temperature measurements and the average result used in calculations.

- Calculated expected system performance values.
- Actual production values from ECU unit.
- A comparison of the calculated vs. actual production results with the % difference indicated for all test periods.
- Error conditions caused for ECU troubleshooting testing and associated screen shots of ECU alarms.

SIDEWALK SPECIFICATION

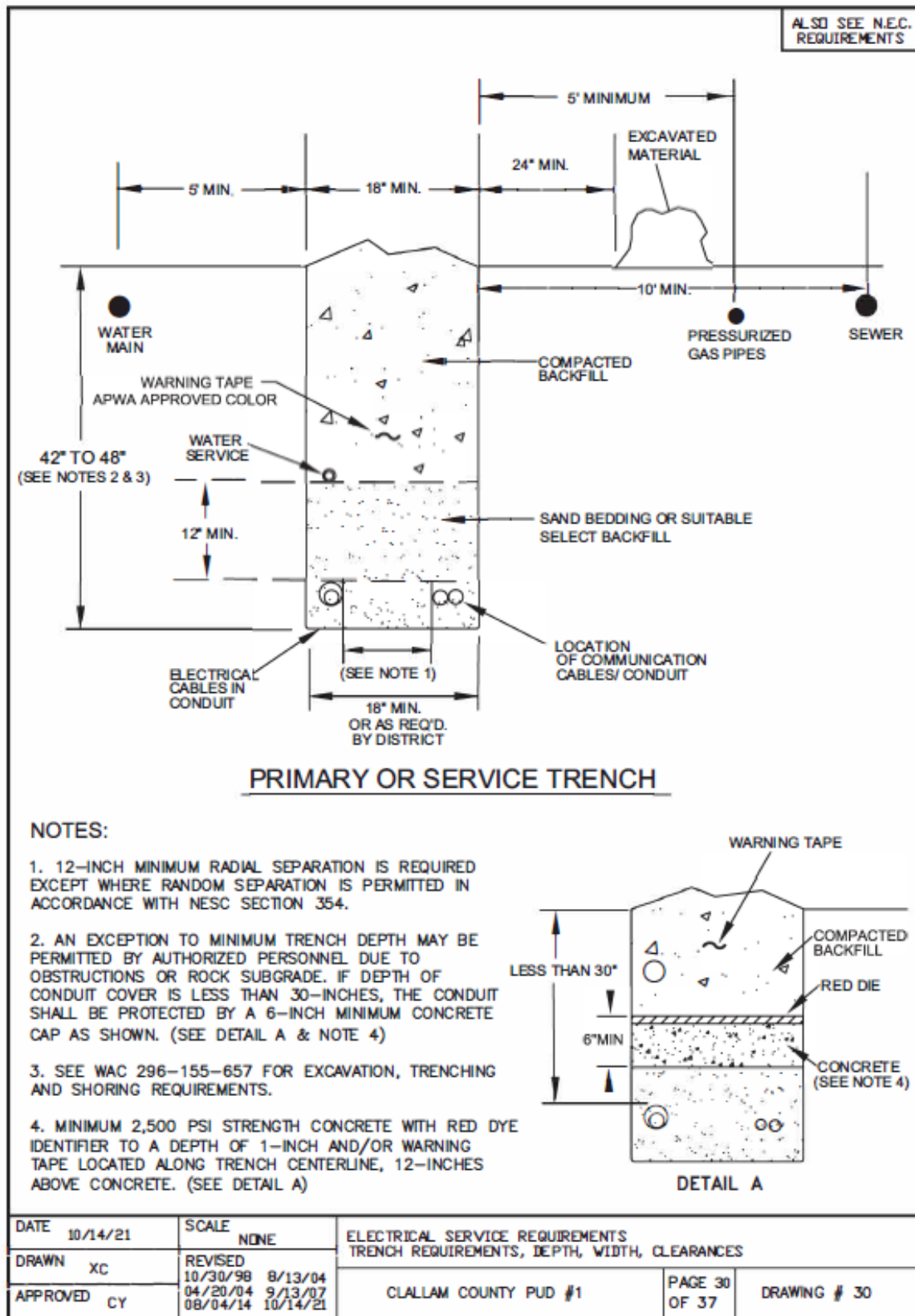


SIDEWALK AT PEDESTRIAN CURB



SIDEWALK AT BARRIER CURB

DRAWING #30



PART IV BID FORMS

BID FORM, CERTIFICATES, AFFIDAVITS, AND OTHER BID FORMS

BID FORM

BID NO. 240801

PROJECT NAME: LOW INCOME COMMUNITY SOLAR

TO: PUD No. 1 of Clallam County
Attn: Contracts Coordinator
P.O. Box 1000
Carlsborg, WA 98324

FROM: _____
Legal Business Name

BID:

Pursuant to and in compliance with the Bid Documents, the undersigned Bidder agrees to perform and furnish all the necessary Work including services, permitting, work, labor, equipment, and materials, to design, supply, permit, install, and commission two (2) PV solar rooftop systems on two (2) separate existing roofs as detailed in the Notice and Instructions to Bidders, Specifications, Appendices, Exhibits, Contract Documents, as directed by the Project Manager(s), and elsewhere in the Bid Documents.

The Contractor acknowledges having made a careful examination of the Project plans, specifications, and construction drawings, Bid Documents, Contract Documents, and has become informed as to the location and nature of the proposed project; the transportation facilities; the kind and character of soil and terrain to be encountered; the kind of equipment, tools, and other facilities required before and during the completion of the Work; and has become acquainted with the availability status of materials to be furnished by the District and with the labor conditions which would affect the Work on the Project.

The undersigned Bidder certifies the examination of work sites and is familiar with the conditions of each site, the necessary equipment, tools, and other facilities along with materials and their availability status required for work completion. The Invitation to Bid, Bid Documents, Notice and Instructions to Bidders, Specifications, Appendices, Contract Documents, and Exhibits have also been carefully examined for proper execution and completion of the entire scope of work for Public Utility District No. 1 of Clallam County which are acknowledged hereinafter for the above-named project for the fixed price indicated as follows:

PROJECT COST

Lump Sum Bid \$ _____

8.6% WA Sales Tax \$ _____

TOTAL PROJECT COST \$ _____

ADDENDUM NO(s). (list all addendum numbers individually)

Is hereby received and acknowledged and has been considered in preparing this Bid.

CONSTRUCTION SCHEDULE

Start Date: After structural engineer's report (within 60 days of bid opening) and immediately after notice to proceed.

Completion Date: Work must be completed by October 1, 2024.

ALTERNATIVE OR EXCEPTIONS TO CONTRACT DOCUMENTS

Any alternative or exceptions to the Contract Documents:

PROPOSED MODIFICATIONS OR ADDITIONS

CONTRACTOR'S SAFETY CONTACT PERSON

The Contractor's Safety Contact Person is listed below, along with that person's telephone number(s). The Contractor shall notify the District in the event that the Safety Contact Person changes. The Contractor shall be familiar with the District's safety plan, attached as Exhibit "B".

Name	Telephone Number

CONTRACTOR INFORMATION

Legal Business Name_____

Federal Employer Identification Number _____

Mailing Address _____

Submitted By (print name) _____ Date:_____

Title _____ Signature _____

Telephone _____ Email _____



**CERTIFICATION OF COMPLIANCE
WITH WAGE PAYMENT STATUTES
Bid No. 240801**

The bidder hereby certifies that, within the three-year period immediately preceding the bid solicitation date, the bidder is not a “willful” violator, as defined in RCW 49.48.082, of any provision of chapters 49.46, 49.48, or 49.52 RCW, as determined by a final and binding citation and notice of assessment issued by the Department of Labor and Industries or through a civil judgment entered by a court of limited or general jurisdiction.

I certify under penalty of perjury under the laws of the State of Washington that the foregoing is true and correct.

Bidder’s Business Name

Signature of Authorized Official*

Printed Name

Title

Date

City

State

** If a corporation, proposal must be executed in the corporate name by the president or vice-president (or any other corporate officer accompanied by evidence of authority to sign). If a co-partnership, proposal must be executed by a partner.*

NON-COLLUSION AFFIDAVIT

STATE OF _____)

) **SS.**

COUNTY OF _____)

The undersigned, being first duly sworn on oath, says that the bid herewith submitted is a genuine and not a sham or collusive bid, or made in the interest or on behalf of any person not therein named; and (s)he further says that the said bidder has not directly or indirectly induced or solicited any bidder on the above work or supplies to put in a sham bid, or any other person or corporation to refrain from bidding, and that said bidder has not in any manner sought by collusion to secure to him/her self an advantage over any other bidder or bidders.

Print Firm Name

Authorized Signature

Print Name of Signatory

Title of Signatory

SUBSCRIBED and SWORN to before me this ____ day of _____ 20__.

Print Name of Notary Public

Signature of Notary Public

NOTARY PUBLIC in and for the State of _____,

Residing at _____

My Comm. Exp.: _____

MANDATORY BIDDER RESPONSIBILITY CHECKLIST

The following checklist will be used in documenting that a Bidder meets the mandatory bidder responsibility criteria. Submit this checklist with bid.

General Information	
Project Name:	Project Number:
Bidder's Business Name:	Bid Submittal Deadline:
Contractor Registration – https://lni.wa.gov	
License Number:	Status: Active: Yes <input type="checkbox"/> No <input type="checkbox"/>
Effective Date (must be effective on or before Bid Submittal Deadline):	Expiration Date:
Contractor and Plumber Infraction List – https://www.lni.wa.gov/licensing-permits/public-works-projects/strike-and-debar/	
Is Bidder on Infraction List? Yes <input type="checkbox"/> No <input type="checkbox"/>	
Is the Bidder listed on the “Contractors Not Allowed to Bid” list of the Department of Labor and Industries? https://lni.wa.gov/licensing-permits/public-works-projects/strike-and-debar/contractors-not-allowed-to-bid Yes <input type="checkbox"/> No <input type="checkbox"/>	
Current UBI Number – http://dor.wa.gov	
UBI Number:	Account Closed: Open <input type="checkbox"/> Closed <input type="checkbox"/>
Industrial Insurance Coverage –	
Account Number:	Account Current: Active: Yes <input type="checkbox"/> No <input type="checkbox"/>
Employment Security Department Number –	
Employment Security Department Number:	
Has Bidder provided account number on the Bid Form? Yes <input type="checkbox"/> No <input type="checkbox"/>	
Have you asked Bidder for documentation from ESD on account number provided? Yes <input type="checkbox"/> No <input type="checkbox"/>	
Tax Registration Number:	Account Closed: Open <input type="checkbox"/> Closed <input type="checkbox"/>
Federal (if applicable) Not disqualified from bidding - https://sam.gov/content/home	
Does Bidder have “Active Exclusion Record with the Federal Government? Yes <input type="checkbox"/> No <input type="checkbox"/>	

SUBCONTRACTOR RESPONSIBILITY CHECKLIST

The following checklist shall be used by Contractors and Subcontractors in documenting that subcontractor(s) of any tier meets the subcontractor responsibility criteria. Submit this documentation no later than the Pre-Construction Meeting for each sub-contractor.

General Information	
Project Name:	Project Number:
Subcontractor's Business Name:	Subcontract Execution Date:
Contractor Registration – https://secure.lni.wa.gov/verify/	
License Number:	Status: Active: Yes <input type="checkbox"/> No <input type="checkbox"/>
Effective Date (must be effective on or before Bid Submittal Deadline):	Expiration Date:
Contractor Strike List – https://secure.lni.wa.gov/debarandstrike/ContractorStrikeList.aspx	
Is Subcontractor on Infraction List? Yes <input type="checkbox"/> No <input type="checkbox"/>	
Current UBI Number – https://dor.wa.gov/	
UBI Number:	Account Closed: Open <input type="checkbox"/> Closed <input type="checkbox"/>
Industrial Insurance Coverage	
Account Number:	Account Current: Yes <input type="checkbox"/> No <input type="checkbox"/>
Employment Security Department Number	
Employment Security Department Number:	Has Subcontractor provided account number on the Bid Form? Yes <input type="checkbox"/> No <input type="checkbox"/>
And/or have you asked the Subcontractor for documentation from Employment Security Department on account number? Yes <input type="checkbox"/> No <input type="checkbox"/>	
State Excise Tax Registration Number – https://dor.wa.gov/	
Tax Registration Number:	Account Closed: Open <input type="checkbox"/> Closed <input type="checkbox"/>
Not Disqualified from Bidding – https://secure.lni.wa.gov/debarandstrike/ContractorDebarList.aspx	
Is the Subcontractor listed on the "Contractors Not Allowed to Bid" list of the Department of Labor and Industries? Yes <input type="checkbox"/> No <input type="checkbox"/>	

BIDDERS' CHECKLIST

The following list is offered as a partial checklist of items requiring the Bidder's signature and attention.

1. Bid Security of five percent enclosed with Bid? _____
2. Bid properly signed and all information present? _____
3. Addenda section filled out and acknowledged? _____
4. Non-Collusion Affidavit is properly executed and enclosed? _____
5. Certificate of Compliance with Wage Payment Statutes enclosed? _____
6. Has a Subcontractor Listing been prepared for submittal? _____
(If required by RCW 39.30.060)
7. Has the Supplemental Bidder Criteria been completed and enclosed? _____

PART V CONTRACT FORMS

CONTRACT AND BONDS

CONTRACT

BID NO. 240801

THIS AGREEMENT made and entered into as of the last date written below, by and between PUBLIC UTILITY DISTRICT NO. 1 OF CLALLAM COUNTY (herein-after called the "District") and *CONTRACTOR LEGAL BUSINESS NAME.*, located at *City, State* (hereinafter called the "Contractor").

WITNESSETH: That the District and the Contractor, in consideration of the payments hereinafter mentioned, agree as follows:

ARTICLE I - CONTRACT DOCUMENTS

The complete contract includes the Invitation for Bids, Notice and Instructions to Bidders, the Bid Proposal, Specifications, Contract, all Exhibits, and all modifications incorporated in these documents before their execution. The foregoing documents shall hereinafter be called "Contract Documents". All obligations of the District and the Contractor are fully set forth and described herein.

In the event of a discrepancy between any of the Contract Documents, as above defined, at the request of the Contractor, the District shall give a written interpretation thereof, which interpretation shall govern.

ARTICLE II - CONTRACT COST

The Contractor agrees to provide to the District, and the District agrees to purchase from the Contractor, the following services in accordance with the Contract Documents and the provisions of the Contractor's proposal attached hereto and made a part hereof:

The design, supply, permitting, install, and commission of two (2) PV solar rooftop systems on two (2) separate existing roofs. Project costs include all aspects of design through turn-key installation outlined in the scope of work and instructions to bidders. Rooftop locations under this bid are as follows:

- Administration Building, 104 Hooker Road, Sequim, WA 98382
+/- 2% of 95KW and 3-phase 277/480 VAC
- Substation Shop, 112 Idea Place, Sequim, WA 98382
+/- 2% of 42KW and 3-phase 277/480 VAC

The District will obtain structural engineering certification necessary for the project to proceed, all other permit requirements are the responsibility of the contractor.

TOTAL CONTRACT COST \$ _____
(WSST not included)

Start Date: After structural engineer's report (within 60 days of Bid opening) and immediately after notice to proceed.

Completion Date: Work must be completed by October 1, 2024.

Liquidated Damages

Time is of the essence on this Contract. Construction of the Project must be completed on or before October 1, 2024. As liquidated damages, and not as a penalty Contractor will pay District \$200.00 per day and the District will deduct \$200.00 from the quoted cost for each calendar day after October 1, 2024, that Project completion is delayed due to Contractor or any of Contractor's subcontractors, suppliers, or anyone for whom Contractor is responsible.

The District shall have the right to deduct from and retain out of such monies which may then be due, or which may become due and payable to the Contractor, if the amount due and to become due from the District to the Contractor is insufficient to pay in full any such liquidated damages, the Contractor shall pay to the District the amount necessary to effect such payment in full. Provided, however, that the District shall promptly notify the Contractor in writing of the manner in which the amount retained, deducted, or claimed as liquidated damages was computed.

ARTICLE III - INDEMNITY AND HOLD HARMLESS AGREEMENT

The Contractor agrees to indemnify, defend, and hold harmless the District and its agents, other contractors, and employees from liability, claims, loss, damage, injury, or death arising out of or resulting from performance by the Contractor under the terms of this Contract, except as otherwise limited in this paragraph. In the event of concurrent negligence or fault of the Contractor, its agents, employees, subcontractors, or others for whom it is responsible and the District, its agents, other contractors, or employees, the Contractor shall indemnify, defend, and hold harmless the District and its agents or employees to the extent that liability, claims, loss, damage, injury, or death is caused by the negligence or fault of the Contractor, its agents, employees, subcontractors, or others for whom it is responsible.

It is understood that the Contractor assumes the risk of the condition of the property of the District to be worked upon or about, and Contractor agrees to indemnify the District or its agents and employees against any liability, claims, loss, damage, injury, or death to the person or property of Contractor, its agents, employees, representatives, licensees, or invitees, resulting from any defective condition of said property, while the Contractor is engaged in the performance of the Work.

Contractor also agrees to indemnify, defend, and hold harmless the District from any and all liens, claims, or damage of any kind or nature against or to any property of the District and resulting from or arising out of the performance by the Contractor its agents, employees, subcontractors, or others for whom it is responsible.

In all claims against the District or its agents and employees, or the Contractor, any subcontractor, anyone directly or indirectly employed by the Contractor or any subcontractor, or anyone for whose acts the Contractor or any subcontractor may be liable, the indemnification obligation under this paragraph shall not be affected by any limitation on the amount or type of damages, compensation, or benefits payable by or for the Contractor or any subcontractor under any worker's compensation act, including Title 51 RCW, any disability benefit acts, or any other employee benefit acts. The Contractor and any subcontractor hereby waive, for themselves and their successors, any right to

claim any such limitation as a defense, set off, or other reduction of the District's right to indemnification under this paragraph.

ARTICLE IV - MUTUAL CYBER SECURITY INDEMNIFICATION

Both parties agree to be responsible for the protection of their own computers, servers, hard drives, information systems, and email accounts from cyber security breaches, including but not limited to malicious software, viruses, hacking, and phishing scams ("Cyber Security Breaches"). Each party shall indemnify the other from any damages, liabilities, or expenses of every kind, including but not limited to reasonable attorney's fees, resulting from or arising out of their own Cyber Security Breaches, including wire fraud attempts directed to the other party resulting from such Cyber Security Breaches.

ARTICLE V - PAYMENTS/RETAINAGE

Monthly progress payments will be made by the District to the Contractor within 30 days of receipt of a billing statement, provided the District Representative verifies the accuracy of the billing or corrects it as mutually agreeable to the District and the Contractor. All invoices shall have the agreement number on the invoice and be mailed to Clallam County Public Utility District No. 1, Attention: Contracts Coordinator, P.O. Box 1000, Carlsborg, WA 98324.

In accordance with the Revised Code of Washington, Chapter 60.28, public improvement contracts shall provide, and public bodies shall reserve, a contract retainage not to exceed five percent of the moneys earned by the Contractor as a trust fund for the protection and payment of: (a) the claims of any person arising under this quotation, and (b) the State with respect to taxes imposed pursuant to Title 82 RCW which may be due from such Contractor.

ARTICLE VI - PAYMENT OF PREVAILING WAGES

In accordance with Chapter 39.12 RCW, there shall be paid to all laborers, workers, or mechanics employed on the Project, a wage not less than the prevailing rate of wage as set forth in Chapter 39.12 RCW and **Exhibit A** of the Invitation to Bid, incorporated herein by this reference, for an hour's work in the same trade or occupation in the area of work regardless of any contractual relationship which may exist, or be alleged to exist, between the Contractor and any laborers, workers, mechanics, or subcontractors.

Before payment is made of any sum or sums due hereunder, the Contractor and each and every subcontractor shall submit to the District a "Statement of Intent to Pay Prevailing Wages," which statement shall include:

- 1) The Contractor's registration certificate number; and
- 2) The prevailing rate of wage for each classification of workers entitled to prevailing wages under RCW 39.12.020 and the estimated number of workers in each classification.

Each Statement of Intent to Pay Prevailing Wages must be approved by the Industrial Statistician of the Department of Labor and Industries before it is submitted to the District.

Unless otherwise authorized by the Department of Labor and Industries, each voucher claim submitted by the Contractor for payment shall state that the prevailing wages have been paid in accordance with the pre-filed Statement or Statements of Intent to Pay Prevailing Wages on file. Following the final acceptance of the Project, the Contractor and each and every subcontractor shall submit to the District an "Affidavit of Wages Paid" before the funds retained according to the provisions of RCW 60.28.010 are released to the Contractor. Each affidavit of wages paid must be certified by the Industrial Statistician of the Department of Labor and Industries before it is submitted to the District.

**ARTICLE VII -
INSURANCE**

The Contractor shall, at his own expense and cost, carry in an insurance company or companies and under policies of insurance, acceptable to and approved by the District, the following insurance with limits not less than shown on the respective items:

a. Worker's Compensation

To the limit required by the laws of the State of Washington.

b. Comprehensive General Liability and Property Damage Insurance

This insurance shall include coverage for contractor's contingency liability Insurance covering subcontractor's liability, contractual liability insurance, completed operations liability insurance, and automobile liability insurance covering owned, non-owned, and hired units.

Minimum Limits:

Bodily Injury	\$1,000,000 each person
Property Damage	\$1,000,000 each occurrence
	\$2,000,000 aggregate
Umbrella Coverage	\$2,000,000

c. All policies of insurance providing coverages required under paragraph "b" above shall name the Public Utility District No. 1 of Clallam County as additional named insured with a cross liability clause and provide that no cancellation or material changes in the policies shall become effective unless thirty (30) days prior notice of such cancellation or change shall be furnished the District by registered mail.

Prior to commencement of any work hereunder, the Contractor shall provide the District with evidence of worker's compensation insurance required under "a" above.

ARTICLE VIII - PERFORMANCE AND PAYMENT BOND(S)

The Contractor shall furnish performance and payment bond(s) in the penal sum not less than one hundred percent (100%) of the bid cost of the Project, on an appropriate form, with a surety or sureties acceptable to the District. When the performance and payment bond(s) requirement has been met, the Contractor will be given a notice to proceed. In the event that the surety or sureties on the performance and payment bond(s) delivered to the District shall at any time become unsatisfactory to the District, the Contractor shall, upon request by the District, deliver to the District another or an additional bond(s).

Should the successful bidder fail or refuse to execute such counterparts or to furnish a performance and payment bond(s) within ten (10) days after written notification of the acceptance of the proposal by the District, the bidder will be considered to have abandoned the proposal. In such event, the District shall be entitled (a) to enforce the bid bond(s) in accordance with its terms, or (b) if a certified check has been delivered with the proposal, to retain from the proceeds of the certified check the difference (not exceeding the amount of the certified check) between the amount of the proposal and such larger amount for which the District may in good faith contract with another party to construct the project. The term "successful" bidder shall be deemed to include any bidder whose proposal is accepted after another bidder has previously refused or has been unable to execute the bond(s).

ARTICLE IX – TERMINATION FOR CONVENIENCE

The District may at any time, for any reason, and without cause and without prejudice, terminate all or part of the Contractor's services and work at the District's convenience. Upon seven days' written notice to Contractor, the Contractor shall immediately discontinue work, services, placing of material orders, facilities, and supplies in connection with the performance of this Contract. In such case, Contractor shall be paid for (without duplication of any items):

1. Completed and acceptable Work executed in accordance with the Contract Documents prior to the effective date of termination, including fair and reasonable sums for overhead and profit on such Work;
2. Expenses sustained prior to the effective date of termination in performing services and furnishing labor, materials, or equipment as required by the Contract Documents in connection with uncompleted Work, plus fair and reasonable sums for overhead and profit on such expenses;
3. All claims, costs, losses, and damages (including but not limited to all fees and charges of engineers, architects, attorneys, and other professionals and all court or arbitration or other dispute resolution costs) reasonably incurred in settlement of terminated contracts with Subcontractors, Suppliers, and others; and
4. Reasonable expenses directly attributable to termination and actually incurred.

Contractor shall not be paid on account of loss of anticipated profits or revenue or other economic loss arising out of or resulting from such termination.

The District shall have title to all Work performed and materials purchased through the date of termination. Contractor shall not be entitled to any claim or claim of lien against the District for any additional compensation or damages in the event of such termination and payment.

ARTICLE X – TERMINATION OF CONTRACT

In the event that any of the provisions of this contract or any federal, state, or local laws or regulations are violated by the Contractor or by any of the Contractor's subcontractors, the District may serve written notice of intention to terminate such contract upon the Contractor, which notice shall specify the reasons therefor. Unless within ten (10) days after serving such notice upon the Contractor such violation shall cease and an arrangement for the correction thereof satisfactory to the District be made, the Contract shall, upon the expiration of the said ten (10) days, cease and terminate. In the event of any such termination, the District may purchase the materials necessary for complete performance of this contract for the account and at the expense of the Contractor, and the Contractor shall be liable to the District for any excess cost occasioned thereby.

ARTICLE XI – DEFAULT

If, in the sole judgment of the District, the Contractor, in connection with any work performed hereunder, fails in any respect to carry on the work with promptness and diligence or violates any of the terms or conditions of this Contract, such refusal, failure, or violation shall constitute a default by the Contractor under this Contract and, in such event, the District may give the Contractor twenty-four (24) hours notice to remedy such default. Upon the failure of the Contractor to remedy such default within such time, the District will be relieved of any further obligations hereunder and in addition to all other rights and remedies in law or equity may cancel this Contract without any obligation or liability on the District whatsoever except as to payment for work already performed by the Contractor.

ARTICLE XII – DISTRICT'S RIGHT TO AUDIT

The District shall have the right to audit all contractor records pertaining to the work performed at any time during a project and within one year after the completion of the work. At the District's discretion, prior to awarding a project, contractors may be removed from the list of approved bidders if exception is taken to the District's auditing requirements. Should a contractor refuse to allow the District to audit their records during the course of a project, the District may terminate the contract or agreement and deny the opportunity to bid on future District projects.

ARTICLE XIII - CONTRACTOR'S PROPRIETARY INFORMATION

The Contractor acknowledges the District is subject to chapter 42.56 RCW, the Public Disclosure Act, and this Contract shall be a public record as defined in RCW 42.56.040 through 42.56.550. Any specific information submitted to the District and claimed by the Contractor to be confidential or proprietary, must be clearly identified as such by the Contractor. To the extent consistent with chapter 42.56 RCW, the District shall maintain the confidentiality of all such information marked or identified as confidential or proprietary. If a request is made to view the Contractor's proprietary information and the District intends to release the information, the District will notify the Contractor

of the request and notify the Contractor of the date that such records will be released to the requester. It will be the responsibility of the Contractor to obtain any necessary court order enjoining that disclosure. If the Contractor fails to obtain the court order enjoining disclosure, the District will release the requested information.

ARTICLE XIV – CLAIMS AND LIENS

The Contractor shall promptly pay all claims for labor done for the performance of the Project work and shall keep all said work free from all liens arising from labor done thereto. The District's Auditing Officer may require the Contractor to furnish payroll records for the District's inspection.

ARTICLE XV – DEBARMENT, SUSPENSION AND OTHER

Contractor certifies to the best of their knowledge and belief that they and their principals:

- Are not presently debarred, suspended, proposed for debarment, declared ineligible, or voluntarily excluded from covered transactions by any Federal department or agency;
- Have not within a three year period preceding this proposal been convicted of or had a civil judgment rendered against them for commission of fraud or a criminal offense in connection with obtaining, attempting to obtain, or performing a public (Federal, State or local) transaction or contract under a public transaction: violation of Federal or State antitrust statutes or commission of embezzlement, theft, forgery, bribery, falsification or destruction of records, making false statement, or receiving stolen property;
- Are not presently indicted for otherwise criminally or civilly charged by a government entity (Federal State, or local) with commission of any of the offenses enumerated in any paragraphs within this certification; and
- Have not within a three-year period preceding this application/proposal had one or more public transactions (Federal, State, or local) terminated for cause or default.

ARTICLE XVI – CONTRACTOR OR THIRD-PARTY WORKER RETIREMENT STATUS VERIFICATION

The parties hereto acknowledge that under Title 41 of the Revised Code of Washington, the District is obligated to report to the Washington Department of Retirement Systems any retirees in its employ, including contractors and subcontractors and their workers, who retired from certain Washington State retirement systems. Failure to report could result in a financial liability to the District. Accordingly, Contractor agrees to and shall report to the District the retirement status of all of its workers, subcontractors, and subcontractors' workers who will be performing services for the District under this Agreement. Contractor shall be responsible to pay any financial liability imposed upon the District by the Washington Department of Retirement Systems for pension overpayments resulting from Contractor's failure to properly report to the District such retirement status. In the alternative, Contractor may provide to the District the Social Security numbers of all its workers, subcontractors, and subcontractors' workers who will be performing services for the District under this Agreement, and the District shall undertake to verify the retirement status of those workers. In such event, Contractor shall be responsible to pay any financial liability imposed upon the District by the Washington Department of Retirement Systems for pension overpayments resulting from Contractor's failure to provide proper Social Security numbers for each such worker.

**ARTICLE XVII –
DISPUTE RESOLUTION**

Any dispute that arises out of the interpretation, performance, enforcement, or any other aspect of this Contract shall be resolved by submitting the same to binding arbitration, which shall proceed according to the Washington arbitration act, Chapter 7.04A RCW, and shall be conducted within Clallam County, Washington; provided, however, that each party shall select a nominating person within ten (10) days of notice of the dispute from one party to the other. The two nominating persons shall then meet and promptly select the arbitrator. If, within thirty (30) days after receipt of the notice of the dispute, the nominating persons are unable to select an arbitrator, the arbitrator shall be selected by a Superior Court Judge of Clallam County. The parties shall require a written decision by the arbitrator as a condition of the selection of the arbitrator. The prevailing party as determined by the arbitrator shall be entitled to its reasonable attorney fees and costs associated with the arbitration. The parties shall share equally the arbitrator's fee and costs. Venue for any action brought on the arbitration award, including enforcement of such award, shall be in the Superior Court of Clallam County, and such action shall be governed by application of the laws of the state of Washington. The prevailing party in any such action on the arbitration award shall be entitled to its reasonable attorney fees and costs associated with such action. This Agreement shall be governed by and construed and enforced in accordance with the laws of the state of Washington without application of the principals of conflicts of laws.

CONTRACTOR

By _____
(Signature)

Dated _____

(Typed)

Title _____

**PUBLIC UTILITY DISTRICT NO. 1
OF CLALLAM COUNTY, WASHINGTON**

By _____
(Signature)

Dated _____

(Typed)

Title _____

PART VI EXHIBITS

PREVAILING WAGE, PERMITS, ADDENDA, CHANGE ORDER

State of Washington
Department of Labor & Industries
Prevailing Wage Section - Telephone 360-902-5335
PO Box 44540, Olympia, WA 98504-4540

Washington State Prevailing Wage

The PREVAILING WAGES listed here include both the hourly wage rate and the hourly rate of fringe benefits. On public works projects, worker's wage and benefit rates must add to not less than this total. A brief description of overtime calculation requirements are provided on the Benefit Code Key.

Journey Level Prevailing Wage Rates for the Effective Date: 10/30/2023

<u>County</u>	<u>Trade</u>	<u>Job Classification</u>	<u>Wage</u>	<u>Holiday</u>	<u>Overtime</u>	<u>Note</u>	<u>*Risk Class</u>
Clallam	Asbestos Abatement Workers	Journey Level	\$59.07	<u>5D</u>	<u>1H</u>		View
Clallam	Boilermakers	Journey Level	\$74.29	<u>5N</u>	<u>1C</u>		View
Clallam	Brick Mason	Journey Level	\$69.07	<u>7E</u>	<u>1N</u>		View
Clallam	Brick Mason	Pointer-Caulker-Cleaner	\$69.07	<u>7E</u>	<u>1N</u>		View
Clallam	Building Service Employees	Janitor	\$15.74		<u>1</u>		View
Clallam	Building Service Employees	Shampooer	\$15.74		<u>1</u>		View
Clallam	Building Service Employees	Waxer	\$15.74		<u>1</u>		View
Clallam	Building Service Employees	Window Cleaner	\$15.74		<u>1</u>		View
Clallam	Cabinet Makers (In Shop)	Journey Level	\$16.04		<u>1</u>		View
Clallam	Carpenters	Acoustical Worker	\$74.96	<u>15J</u>	<u>4C</u>		View
Clallam	Carpenters	Bridge, Dock And Wharf Carpenters	\$74.96	<u>15J</u>	<u>4C</u>		View
Clallam	Carpenters	Floor Layer & Floor Finisher	\$74.96	<u>15J</u>	<u>4C</u>		View
Clallam	Carpenters	Journey Level	\$74.96	<u>15J</u>	<u>4C</u>		View
Clallam	Carpenters	Scaffold Erector	\$74.96	<u>15J</u>	<u>4C</u>		View
Clallam	Cement Masons	Application of all Composition Mastic	\$72.87	<u>15J</u>	<u>4U</u>		View
Clallam	Cement Masons	Application of all Epoxy Material	\$72.37	<u>15J</u>	<u>4U</u>		View
Clallam	Cement Masons	Application of all Plastic Material	\$72.87	<u>15J</u>	<u>4U</u>		View
Clallam	Cement Masons	Application of Sealing Compound	\$72.37	<u>15J</u>	<u>4U</u>		View
Clallam	Cement Masons	Application of Underlayment	\$72.87	<u>15J</u>	<u>4U</u>		View
Clallam	Cement Masons	Building General	\$72.37	<u>15J</u>	<u>4U</u>		View
Clallam	Cement Masons	Composition or Kalman Floors	\$72.87	<u>15J</u>	<u>4U</u>		View
Clallam	Cement Masons	Concrete Paving	\$72.37	<u>15J</u>	<u>4U</u>		View
Clallam	Cement Masons	Curb & Gutter Machine	\$72.87	<u>15J</u>	<u>4U</u>		View
Clallam	Cement Masons	Curb & Gutter, Sidewalks	\$72.37	<u>15J</u>	<u>4U</u>		View
Clallam	Cement Masons	Curing Concrete	\$72.37	<u>15J</u>	<u>4U</u>		View
Clallam	Cement Masons	Finish Colored Concrete	\$72.87	<u>15J</u>	<u>4U</u>		View

Clallam	Cement Masons	Floor Grinding	\$72.87	15J	4U		View
Clallam	Cement Masons	Floor Grinding/Polisher	\$72.37	15J	4U		View
Clallam	Cement Masons	Green Concrete Saw, self-powered	\$72.87	15J	4U		View
Clallam	Cement Masons	Grouting of all Plates	\$72.37	15J	4U		View
Clallam	Cement Masons	Grouting of all Tilt-up Panels	\$72.37	15J	4U		View
Clallam	Cement Masons	Guniting Nozzleman	\$72.87	15J	4U		View
Clallam	Cement Masons	Hand Powered Grinder	\$72.87	15J	4U		View
Clallam	Cement Masons	Journey Level	\$72.37	15J	4U		View
Clallam	Cement Masons	Patching Concrete	\$72.37	15J	4U		View
Clallam	Cement Masons	Pneumatic Power Tools	\$72.87	15J	4U		View
Clallam	Cement Masons	Power Chipping & Brushing	\$72.87	15J	4U		View
Clallam	Cement Masons	Sand Blasting Architectural Finish	\$72.87	15J	4U		View
Clallam	Cement Masons	Screed & Rodding Machine	\$72.87	15J	4U		View
Clallam	Cement Masons	Spackling or Skim Coat Concrete	\$72.37	15J	4U		View
Clallam	Cement Masons	Troweling Machine Operator	\$72.87	15J	4U		View
Clallam	Cement Masons	Troweling Machine Operator on Colored Slabs	\$72.87	15J	4U		View
Clallam	Cement Masons	Tunnel Workers	\$72.87	15J	4U		View
Clallam	Divers & Tenders	Bell/Vehicle or Submersible Operator (Not Under Pressure)	\$129.71	15J	4C		View
Clallam	Divers & Tenders	Dive Supervisor/Master	\$93.94	15J	4C		View
Clallam	Divers & Tenders	Diver	\$129.71	15J	4C	8V	View
Clallam	Divers & Tenders	Diver On Standby	\$88.94	15J	4C		View
Clallam	Divers & Tenders	Diver Tender	\$80.82	15J	4C		View
Clallam	Divers & Tenders	Hyperbaric Worker - Compressed Air Worker 0-30.00 PSI	\$93.26	15J	4C		View
Clallam	Divers & Tenders	Hyperbaric Worker - Compressed Air Worker 30.01 - 44.00 PSI	\$98.26	15J	4C		View
Clallam	Divers & Tenders	Hyperbaric Worker - Compressed Air Worker 44.01 - 54.00 PSI	\$102.26	15J	4C		View
Clallam	Divers & Tenders	Hyperbaric Worker - Compressed Air Worker 54.01 - 60.00 PSI	\$107.26	15J	4C		View
Clallam	Divers & Tenders	Hyperbaric Worker - Compressed Air Worker 60.01 - 64.00 PSI	\$109.76	15J	4C		View
Clallam	Divers & Tenders	Hyperbaric Worker - Compressed Air Worker 64.01 - 68.00 PSI	\$114.76	15J	4C		View
Clallam	Divers & Tenders	Hyperbaric Worker - Compressed Air Worker 68.01 - 70.00 PSI	\$116.76	15J	4C		View
Clallam	Divers & Tenders	Hyperbaric Worker - Compressed Air Worker 70.01 - 72.00 PSI	\$118.76	15J	4C		View

Clallam	Divers & Tenders	Hyperbaric Worker - Compressed Air Worker 72.01 - 74.00 PSI	\$120.76	15J	4C		View
Clallam	Divers & Tenders	Manifold Operator	\$80.82	15J	4C		View
Clallam	Divers & Tenders	Manifold Operator Mixed Gas	\$85.82	15J	4C		View
Clallam	Divers & Tenders	Remote Operated Vehicle Operator/Technician	\$80.82	15J	4C		View
Clallam	Divers & Tenders	Remote Operated Vehicle Tender	\$75.41	15J	4C		View
Clallam	Dredge Workers	Assistant Engineer	\$79.62	5D	3F		View
Clallam	Dredge Workers	Assistant Mate (Deckhand)	\$79.01	5D	3F		View
Clallam	Dredge Workers	Boatmen	\$79.62	5D	3F		View
Clallam	Dredge Workers	Engineer Welder	\$81.15	5D	3F		View
Clallam	Dredge Workers	Leverman, Hydraulic	\$82.77	5D	3F		View
Clallam	Dredge Workers	Mates	\$79.62	5D	3F		View
Clallam	Dredge Workers	Oiler	\$79.01	5D	3F		View
Clallam	Drywall Applicator	Journey Level	\$74.96	15J	4C		View
Clallam	Drywall Tapers	Journey Level	\$74.50	5P	1E		View
Clallam	Electrical Fixture Maintenance Workers	Journey Level	\$37.19	5L	1E		View
Clallam	Electricians - Inside	Cable Splicer	\$105.59	7C	4E		View
Clallam	Electricians - Inside	Cable Splicer (tunnel)	\$113.52	7C	4E		View
Clallam	Electricians - Inside	Certified Welder	\$101.98	7C	4E		View
Clallam	Electricians - Inside	Certified Welder (tunnel)	\$109.56	7C	4E		View
Clallam	Electricians - Inside	Construction Stock Person	\$49.28	7C	4E		View
Clallam	Electricians - Inside	Journey Level	\$98.38	7C	4E		View
Clallam	Electricians - Inside	Journey Level (tunnel)	\$105.59	7C	4E		View
Clallam	Electricians - Motor Shop	Craftsman	\$15.74		1		View
Clallam	Electricians - Motor Shop	Journey Level	\$15.74		1		View
Clallam	Electricians - Powerline Construction	Cable Splicer	\$93.00	5A	4D		View
Clallam	Electricians - Powerline Construction	Certified Line Welder	\$85.42	5A	4D		View
Clallam	Electricians - Powerline Construction	Groundperson	\$55.27	5A	4D		View
Clallam	Electricians - Powerline Construction	Heavy Line Equipment Operator	\$85.42	5A	4D		View
Clallam	Electricians - Powerline Construction	Journey Level Lineperson	\$85.42	5A	4D		View
Clallam	Electricians - Powerline Construction	Line Equipment Operator	\$73.35	5A	4D		View
Clallam	Electricians - Powerline Construction	Meter Installer	\$55.27	5A	4D	8W	View
Clallam	Electricians - Powerline Construction	Pole Sprayer	\$85.42	5A	4D		View
Clallam	Electricians - Powerline Construction	Powderperson	\$63.50	5A	4D		View
Clallam	Electronic Technicians	Journey Level	\$63.38	7E	1E		View
Clallam	Elevator Constructors	Mechanic	\$107.49	7D	4A		View
Clallam	Elevator Constructors	Mechanic In Charge	\$116.13	7D	4A		View

Clallam	Fabricated Precast Concrete Products	Journey Level	\$15.74		1		View
Clallam	Fabricated Precast Concrete Products	Journey Level - In-Factory Work Only	\$15.74		1		View
Clallam	Fence Erectors	Fence Erector	\$50.07	15J	11P	8Y	View
Clallam	Fence Erectors	Fence Laborer	\$50.07	15J	11P	8Y	View
Clallam	Flaggers	Journey Level	\$50.07	15J	11P	8Y	View
Clallam	Glaziers	Journey Level	\$79.16	7L	1Y		View
Clallam	Heat & Frost Insulators And Asbestos Workers	Journey Level	\$87.15	15H	11C		View
Clallam	Heating Equipment Mechanics	Journey Level	\$96.42	7F	1E		View
Clallam	Hod Carriers & Mason Tenders	Journey Level	\$62.49	15J	11P	8Y	View
Clallam	Industrial Power Vacuum Cleaner	Journey Level	\$15.74		1		View
Clallam	Inland Boatmen	Boat Operator	\$61.41	5B	1K		View
Clallam	Inland Boatmen	Cook	\$56.48	5B	1K		View
Clallam	Inland Boatmen	Deckhand	\$57.48	5B	1K		View
Clallam	Inland Boatmen	Deckhand Engineer	\$58.81	5B	1K		View
Clallam	Inland Boatmen	Launch Operator	\$58.89	5B	1K		View
Clallam	Inland Boatmen	Mate	\$57.31	5B	1K		View
Clallam	Inspection/Cleaning/Sealing Of Sewer & Water Systems By Remote Control	Cleaner Operator	\$49.48	15M	11O		View
Clallam	Inspection/Cleaning/Sealing Of Sewer & Water Systems By Remote Control	Foamer Operator	\$49.48	15M	11O		View
Clallam	Inspection/Cleaning/Sealing Of Sewer & Water Systems By Remote Control	Grout Truck Operator	\$49.48	15M	11O		View
Clallam	Inspection/Cleaning/Sealing Of Sewer & Water Systems By Remote Control	Head Operator	\$47.41	15M	11O		View
Clallam	Inspection/Cleaning/Sealing Of Sewer & Water Systems By Remote Control	Technician	\$41.20	15M	11O		View
Clallam	Inspection/Cleaning/Sealing Of Sewer & Water Systems By Remote Control	TV Truck Operator	\$44.31	15M	11O		View
Clallam	Insulation Applicators	Journey Level	\$74.96	15J	4C		View
Clallam	Ironworkers	Journeyman	\$85.80	15K	11N		View
Clallam	Laborers	Air, Gas Or Electric Vibrating Screed	\$59.07	15J	11P	8Y	View
Clallam	Laborers	Airtrac Drill Operator	\$60.90	15J	11P	8Y	View
Clallam	Laborers	Ballast Regular Machine	\$59.07	15J	11P	8Y	View
Clallam	Laborers	Batch Weighman	\$50.07	15J	11P	8Y	View
Clallam	Laborers	Brick Pavers	\$59.07	15J	11P	8Y	View
Clallam	Laborers	Brush Cutter	\$59.07	15J	11P	8Y	View
Clallam	Laborers	Brush Hog Feeder	\$59.07	15J	11P	8Y	View
Clallam	Laborers	Burner	\$59.07	15J	11P	8Y	View
Clallam	Laborers	Caisson Worker	\$60.90	15J	11P	8Y	View

Clallam	Laborers	Carpenter Tender	\$59.07	15J	11P	8Y	View
Clallam	Laborers	Cement Dumper-paving	\$60.15	15J	11P	8Y	View
Clallam	Laborers	Cement Finisher Tender	\$59.07	15J	11P	8Y	View
Clallam	Laborers	Change House Or Dry Shack	\$59.07	15J	11P	8Y	View
Clallam	Laborers	Chipping Gun (30 Lbs. And Over)	\$60.15	15J	11P	8Y	View
Clallam	Laborers	Chipping Gun (Under 30 Lbs.)	\$59.07	15J	11P	8Y	View
Clallam	Laborers	Choker Setter	\$59.07	15J	11P	8Y	View
Clallam	Laborers	Chuck Tender	\$59.07	15J	11P	8Y	View
Clallam	Laborers	Clary Power Spreader	\$60.15	15J	11P	8Y	View
Clallam	Laborers	Clean-up Laborer	\$59.07	15J	11P	8Y	View
Clallam	Laborers	Concrete Dumper/Chute Operator	\$60.15	15J	11P	8Y	View
Clallam	Laborers	Concrete Form Stripper	\$59.07	15J	11P	8Y	View
Clallam	Laborers	Concrete Placement Crew	\$60.15	15J	11P	8Y	View
Clallam	Laborers	Concrete Saw Operator/Core Driller	\$60.15	15J	11P	8Y	View
Clallam	Laborers	Crusher Feeder	\$50.07	15J	11P	8Y	View
Clallam	Laborers	Curing Laborer	\$59.07	15J	11P	8Y	View
Clallam	Laborers	Demolition: Wrecking & Moving (Incl. Charred Material)	\$59.07	15J	11P	8Y	View
Clallam	Laborers	Ditch Digger	\$59.07	15J	11P	8Y	View
Clallam	Laborers	Diver	\$60.90	15J	11P	8Y	View
Clallam	Laborers	Drill Operator (Hydraulic, Diamond)	\$60.15	15J	11P	8Y	View
Clallam	Laborers	Dry Stack Walls	\$59.07	15J	11P	8Y	View
Clallam	Laborers	Dump Person	\$59.07	15J	11P	8Y	View
Clallam	Laborers	Epoxy Technician	\$59.07	15J	11P	8Y	View
Clallam	Laborers	Erosion Control Worker	\$59.07	15J	11P	8Y	View
Clallam	Laborers	Faller & Bucker Chain Saw	\$60.15	15J	11P	8Y	View
Clallam	Laborers	Fine Graders	\$59.07	15J	11P	8Y	View
Clallam	Laborers	Firewatch	\$50.07	15J	11P	8Y	View
Clallam	Laborers	Form Setter	\$60.15	15J	11P	8Y	View
Clallam	Laborers	Gabian Basket Builders	\$59.07	15J	11P	8Y	View
Clallam	Laborers	General Laborer	\$59.07	15J	11P	8Y	View
Clallam	Laborers	Grade Checker & Transit Person	\$62.49	15J	11P	8Y	View
Clallam	Laborers	Grinders	\$59.07	15J	11P	8Y	View
Clallam	Laborers	Grout Machine Tender	\$59.07	15J	11P	8Y	View
Clallam	Laborers	Groutmen (Pressure) Including Post Tension Beams	\$60.15	15J	11P	8Y	View
Clallam	Laborers	Guardrail Erector	\$59.07	15J	11P	8Y	View
Clallam	Laborers	Hazardous Waste Worker (Level A)	\$60.90	15J	11P	8Y	View
Clallam	Laborers	Hazardous Waste Worker (Level B)	\$60.15	15J	11P	8Y	View
Clallam	Laborers	Hazardous Waste Worker (Level C)	\$59.07	15J	11P	8Y	View
Clallam	Laborers	High Scaler	\$60.90	15J	11P	8Y	View

Clallam	Laborers	Jackhammer	\$60.15	15J	11P	8Y	View
Clallam	Laborers	Laserbeam Operator	\$60.15	15J	11P	8Y	View
Clallam	Laborers	Maintenance Person	\$59.07	15J	11P	8Y	View
Clallam	Laborers	Manhole Builder-Mudman	\$60.15	15J	11P	8Y	View
Clallam	Laborers	Material Yard Person	\$59.07	15J	11P	8Y	View
Clallam	Laborers	Mold Abatement Worker	\$59.07	15J	11P	8Y	View
Clallam	Laborers	Motorman-Dinky Locomotive	\$62.59	15J	11P	8Y	View
Clallam	Laborers	nozzleman (concrete pump, green cutter when using combination of high pressure air & water on concrete & rock, sandblast, gunite, shotcrete, water blaster, vacuum blaster)	\$62.49	15J	11P	8Y	View
Clallam	Laborers	Pavement Breaker	\$60.15	15J	11P	8Y	View
Clallam	Laborers	Pilot Car	\$50.07	15J	11P	8Y	View
Clallam	Laborers	Pipe Layer (Lead)	\$62.49	15J	11P	8Y	View
Clallam	Laborers	Pipe Layer/Tailor	\$60.15	15J	11P	8Y	View
Clallam	Laborers	Pipe Pot Tender	\$60.15	15J	11P	8Y	View
Clallam	Laborers	Pipe Reliner	\$60.15	15J	11P	8Y	View
Clallam	Laborers	Pipe Wrapper	\$60.15	15J	11P	8Y	View
Clallam	Laborers	Pot Tender	\$59.07	15J	11P	8Y	View
Clallam	Laborers	Powderman	\$60.90	15J	11P	8Y	View
Clallam	Laborers	Powderman's Helper	\$59.07	15J	11P	8Y	View
Clallam	Laborers	Power Jacks	\$60.15	15J	11P	8Y	View
Clallam	Laborers	Railroad Spike Puller - Power	\$60.15	15J	11P	8Y	View
Clallam	Laborers	Raker - Asphalt	\$62.49	15J	11P	8Y	View
Clallam	Laborers	Re-timberman	\$60.90	15J	11P	8Y	View
Clallam	Laborers	Remote Equipment Operator	\$60.15	15J	11P	8Y	View
Clallam	Laborers	Rigger/Signal Person	\$60.15	15J	11P	8Y	View
Clallam	Laborers	Rip Rap Person	\$59.07	15J	11P	8Y	View
Clallam	Laborers	Rivet Buster	\$60.15	15J	11P	8Y	View
Clallam	Laborers	Rodder	\$60.15	15J	11P	8Y	View
Clallam	Laborers	Scaffold Erector	\$59.07	15J	11P	8Y	View
Clallam	Laborers	Scale Person	\$59.07	15J	11P	8Y	View
Clallam	Laborers	Sloper (Over 20")	\$60.15	15J	11P	8Y	View
Clallam	Laborers	Sloper Sprayer	\$59.07	15J	11P	8Y	View
Clallam	Laborers	Spreader (Concrete)	\$60.15	15J	11P	8Y	View
Clallam	Laborers	Stake Hopper	\$59.07	15J	11P	8Y	View
Clallam	Laborers	Stock Piler	\$59.07	15J	11P	8Y	View
Clallam	Laborers	Swinging Stage/Boatswain Chair	\$50.07	15J	11P	8Y	View
Clallam	Laborers	Tamper & Similar Electric, Air & Gas Operated Tools	\$60.15	15J	11P	8Y	View
Clallam	Laborers	Tamper (Multiple & Self-propelled)	\$60.15	15J	11P	8Y	View
Clallam	Laborers	Timber Person - Sewer (Lagger, Shorer & Cribber)	\$60.15	15J	11P	8Y	View
Clallam	Laborers	Toolroom Person (at Jobsite)	\$59.07	15J	11P	8Y	View

Clallam	Laborers	Topper	\$59.07	15J	11P	8Y	View
Clallam	Laborers	Track Laborer	\$59.07	15J	11P	8Y	View
Clallam	Laborers	Track Liner (Power)	\$60.15	15J	11P	8Y	View
Clallam	Laborers	Traffic Control Laborer	\$53.54	15J	11P	9C	View
Clallam	Laborers	Traffic Control Supervisor	\$56.73	15J	11P	9C	View
Clallam	Laborers	Truck Spotter	\$59.07	15J	11P	8Y	View
Clallam	Laborers	Tugger Operator	\$60.15	15J	11P	8Y	View
Clallam	Laborers	Tunnel Work-Compressed Air Worker 0-30 psi	\$175.79	15J	11P	9B	View
Clallam	Laborers	Tunnel Work-Compressed Air Worker 30.01-44.00 psi	\$180.82	15J	11P	9B	View
Clallam	Laborers	Tunnel Work-Compressed Air Worker 44.01-54.00 psi	\$184.50	15J	11P	9B	View
Clallam	Laborers	Tunnel Work-Compressed Air Worker 54.01-60.00 psi	\$190.20	15J	11P	9B	View
Clallam	Laborers	Tunnel Work-Compressed Air Worker 60.01-64.00 psi	\$192.32	15J	11P	9B	View
Clallam	Laborers	Tunnel Work-Compressed Air Worker 64.01-68.00 psi	\$197.42	15J	11P	9B	View
Clallam	Laborers	Tunnel Work-Compressed Air Worker 68.01-70.00 psi	\$199.32	15J	11P	9B	View
Clallam	Laborers	Tunnel Work-Compressed Air Worker 70.01-72.00 psi	\$201.32	15J	11P	9B	View
Clallam	Laborers	Tunnel Work-Compressed Air Worker 72.01-74.00 psi	\$203.32	15J	11P	9B	View
Clallam	Laborers	Tunnel Work-Guage and Lock Tender	\$62.59	15J	11P	8Y	View
Clallam	Laborers	Tunnel Work-Miner	\$62.59	15J	11P	8Y	View
Clallam	Laborers	Vibrator	\$60.15	15J	11P	8Y	View
Clallam	Laborers	Vinyl Seamer	\$59.07	15J	11P	8Y	View
Clallam	Laborers	Watchman	\$45.51	15J	11P	8Y	View
Clallam	Laborers	Welder	\$60.15	15J	11P	8Y	View
Clallam	Laborers	Well Point Laborer	\$60.15	15J	11P	8Y	View
Clallam	Laborers	Window Washer/Cleaner	\$45.51	15J	11P	8Y	View
Clallam	Laborers - Underground Sewer & Water	General Laborer & Topman	\$59.07	15J	11P	8Y	View
Clallam	Laborers - Underground Sewer & Water	Pipe Layer	\$60.15	15J	11P	8Y	View
Clallam	Landscape Construction	Landscape Construction/Landscaping Or Planting Laborers	\$45.51	15J	11P	8Y	View
Clallam	Landscape Construction	Landscape Operator	\$78.71	15J	11G	8X	View
Clallam	Landscape Maintenance	Groundskeeper	\$15.74		1		View
Clallam	Lathers	Journey Level	\$74.96	15J	4C		View
Clallam	Marble Setters	Journey Level	\$69.07	7E	1N		View
Clallam	Metal Fabrication (In Shop)	Fitter	\$15.74		1		View
Clallam	Metal Fabrication (In Shop)	Laborer	\$15.74		1		View
Clallam	Metal Fabrication (In Shop)	Machine Operator	\$15.74		1		View
Clallam	Metal Fabrication (In Shop)	Painter	\$15.74		1		View
Clallam	Metal Fabrication (In Shop)	Welder	\$15.74		1		View

Clallam	Millwright	Journey Level	\$76.51	15J	4C		View
Clallam	Modular Buildings	Journey Level	\$15.74		1		View
Clallam	Painters	Journey Level	\$51.71	6Z	11J		View
Clallam	Pile Driver	Crew Tender	\$80.82	15J	4C		View
Clallam	Pile Driver	Journey Level	\$75.41	15J	4C		View
Clallam	Plasterers	Journey Level	\$70.91	7Q	1R		View
Clallam	Plasterers	Nozzleman	\$74.91	7Q	1R		View
Clallam	Playground & Park Equipment Installers	Journey Level	\$15.74		1		View
Clallam	Plumbers & Pipefitters	Journey Level	\$100.69	6Z	1G		View
Clallam	Power Equipment Operators	Asphalt Plant Operators	\$80.02	15J	11G	8X	View
Clallam	Power Equipment Operators	Assistant Engineer	\$75.26	15J	11G	8X	View
Clallam	Power Equipment Operators	Barrier Machine (zipper)	\$79.31	15J	11G	8X	View
Clallam	Power Equipment Operators	Batch Plant Operator: concrete	\$79.31	15J	11G	8X	View
Clallam	Power Equipment Operators	Boat Operator	\$80.05	7A	11H	8X	View
Clallam	Power Equipment Operators	Bobcat	\$75.26	15J	11G	8X	View
Clallam	Power Equipment Operators	Brokk - Remote Demolition Equipment	\$75.26	15J	11G	8X	View
Clallam	Power Equipment Operators	Brooms	\$75.26	15J	11G	8X	View
Clallam	Power Equipment Operators	Bump Cutter	\$79.31	15J	11G	8X	View
Clallam	Power Equipment Operators	Cableways	\$80.02	15J	11G	8X	View
Clallam	Power Equipment Operators	Chipper	\$79.31	15J	11G	8X	View
Clallam	Power Equipment Operators	Compressor	\$75.26	15J	11G	8X	View
Clallam	Power Equipment Operators	Concrete Finish Machine - Laser Screed	\$75.26	15J	11G	8X	View
Clallam	Power Equipment Operators	Concrete Pump - Mounted Or Trailer High Pressure Line Pump, Pump High Pressure	\$78.71	15J	11G	8X	View
Clallam	Power Equipment Operators	Concrete Pump: Truck Mount With Boom Attachment Over 42 M	\$80.02	15J	11G	8X	View
Clallam	Power Equipment Operators	Concrete Pump: Truck Mount With Boom Attachment Up To 42m	\$79.31	15J	11G	8X	View
Clallam	Power Equipment Operators	Conveyors	\$78.71	15J	11G	8X	View
Clallam	Power Equipment Operators	Cranes Friction: 200 tons and over	\$82.49	7A	11H	8X	View
Clallam	Power Equipment Operators	Cranes, A-frame: 10 tons and under	\$75.29	7A	11H	8X	View
Clallam	Power Equipment Operators	Cranes: 100 tons through 199 tons, or 150' of boom (including jib with attachments)	\$80.86	7A	11H	8X	View
Clallam	Power Equipment Operators	Cranes: 20 tons through 44 tons with attachments	\$79.35	7A	11H	8X	View
Clallam	Power Equipment Operators	Cranes: 200 tons- 299 tons, or 250' of boom including jib with attachments	\$81.69	7A	11H	8X	View
Clallam	Power Equipment Operators	Cranes: 300 tons and over or 300' of boom including jib with attachments	\$82.49	7A	11H	8X	View

Clallam	Power Equipment Operators	Cranes: 45 tons through 99 tons, under 150' of boom(including jib with attachments)	\$80.05	7A	11H	8X	View
Clallam	Power Equipment Operators	Cranes: Friction cranes through 199 tons	\$81.69	7A	11H	8X	View
Clallam	Power Equipment Operators	Cranes: through 19 tons with attachments, a-frame over 10 tons	\$78.74	7A	11H	8X	View
Clallam	Power Equipment Operators	Crusher	\$79.31	15J	11G	8X	View
Clallam	Power Equipment Operators	Deck Engineer/Deck Winches (power)	\$79.31	15J	11G	8X	View
Clallam	Power Equipment Operators	Derricks, On Building Work	\$80.02	15J	11G	8X	View
Clallam	Power Equipment Operators	Dozers D-9 & Under	\$78.71	15J	11G	8X	View
Clallam	Power Equipment Operators	Drill Oilers: Auger Type, Truck Or Crane Mount	\$78.71	15J	11G	8X	View
Clallam	Power Equipment Operators	Drilling Machine	\$80.82	15J	11G	8X	View
Clallam	Power Equipment Operators	Elevator and man-lift: permanent and shaft type	\$75.26	15J	11G	8X	View
Clallam	Power Equipment Operators	Finishing Machine, Bidwell And Gamaco & Similar Equipment	\$79.31	15J	11G	8X	View
Clallam	Power Equipment Operators	Forklift: 3000 lbs and over with attachments	\$78.71	15J	11G	8X	View
Clallam	Power Equipment Operators	Forklifts: under 3000 lbs. with attachments	\$75.26	15J	11G	8X	View
Clallam	Power Equipment Operators	Grade Engineer: Using Blue Prints, Cut Sheets, Etc	\$79.31	15J	11G	8X	View
Clallam	Power Equipment Operators	Gradechecker/Stakeman	\$75.26	15J	11G	8X	View
Clallam	Power Equipment Operators	Guardrail Punch	\$79.31	15J	11G	8X	View
Clallam	Power Equipment Operators	Hard Tail End Dump Articulating Off- Road Equipment 45 Yards. & Over	\$80.02	15J	11G	8X	View
Clallam	Power Equipment Operators	Hard Tail End Dump Articulating Off-road Equipment Under 45 Yards	\$79.31	15J	11G	8X	View
Clallam	Power Equipment Operators	Horizontal/Directional Drill Locator	\$78.71	15J	11G	8X	View
Clallam	Power Equipment Operators	Horizontal/Directional Drill Operator	\$79.31	15J	11G	8X	View
Clallam	Power Equipment Operators	Hydralifts/Boom Trucks Over 10 Tons	\$78.74	7A	11H	8X	View
Clallam	Power Equipment Operators	Hydralifts/boom trucks: 10 tons and under	\$75.29	7A	11H	8X	View
Clallam	Power Equipment Operators	Leverman	\$81.65	15J	11G	8X	View
Clallam	Power Equipment Operators	Loader, Overhead, 6 Yards. But Not Including 8 Yards	\$80.02	15J	11G	8X	View
Clallam	Power Equipment Operators	Loaders, Overhead Under 6 Yards	\$79.31	15J	11G	8X	View
Clallam	Power Equipment Operators	Loaders, Plant Feed	\$79.31	15J	11G	8X	View
Clallam	Power Equipment Operators	Loaders: Elevating Type Belt	\$78.71	15J	11G	8X	View
Clallam	Power Equipment Operators	Locomotives, All	\$79.31	15J	11G	8X	View
Clallam	Power Equipment Operators	Material Transfer Device	\$79.31	15J	11G	8X	View

Clallam	Power Equipment Operators	Mechanics: All (Leadmen - \$0.50 per hour over mechanic)	\$80.82	15J	11G	8X	View
Clallam	Power Equipment Operators	Motor Patrol Graders	\$80.02	15J	11G	8X	View
Clallam	Power Equipment Operators	Mucking Machine, Mole, Tunnel Drill, Boring, Road Header And/or Shield	\$80.02	15J	11G	8X	View
Clallam	Power Equipment Operators	Oil Distributors, Blower Distribution & Mulch Seeding Operator	\$75.26	15J	11G	8X	View
Clallam	Power Equipment Operators	Outside Hoists (Elevators and Manlifts), Air Tuggers, Strato	\$78.71	15J	11G	8X	View
Clallam	Power Equipment Operators	Overhead, bridge type Crane: 20 tons through 44 tons	\$79.35	7A	11H	8X	View
Clallam	Power Equipment Operators	Overhead, bridge type: 100 tons and over	\$80.86	7A	11H	8X	View
Clallam	Power Equipment Operators	Overhead, bridge type: 45 tons through 99 tons	\$80.05	7A	11H	8X	View
Clallam	Power Equipment Operators	Pavement Breaker	\$75.26	15J	11G	8X	View
Clallam	Power Equipment Operators	Pile Driver (other Than Crane Mount)	\$79.31	15J	11G	8X	View
Clallam	Power Equipment Operators	Plant Oiler - Asphalt, Crusher	\$78.71	15J	11G	8X	View
Clallam	Power Equipment Operators	Posthole Digger, Mechanical	\$75.26	15J	11G	8X	View
Clallam	Power Equipment Operators	Power Plant	\$75.26	15J	11G	8X	View
Clallam	Power Equipment Operators	Pumps - Water	\$75.26	15J	11G	8X	View
Clallam	Power Equipment Operators	Quad 9, Hd 41, D10 And Over	\$80.02	15J	11G	8X	View
Clallam	Power Equipment Operators	Quick Tower: no cab, under 100 feet in height base to boom	\$79.31	15J	11G	8X	View
Clallam	Power Equipment Operators	Remote Control Operator On Rubber Tired Earth Moving Equipment	\$80.02	15J	11G	8X	View
Clallam	Power Equipment Operators	Rigger and Bellman	\$75.29	7A	11H	8X	View
Clallam	Power Equipment Operators	Rigger/Signal Person, Bellman(Certified)	\$78.74	7A	11H	8X	View
Clallam	Power Equipment Operators	Rollagon	\$80.02	15J	11G	8X	View
Clallam	Power Equipment Operators	Roller, Other Than Plant Mix	\$75.26	15J	11G	8X	View
Clallam	Power Equipment Operators	Roller, Plant Mix Or Multi-lift Materials	\$78.71	15J	11G	8X	View
Clallam	Power Equipment Operators	Roto-mill, Roto-grinder	\$79.31	15J	11G	8X	View
Clallam	Power Equipment Operators	Saws - Concrete	\$78.71	15J	11G	8X	View
Clallam	Power Equipment Operators	Scraper, Self Propelled Under 45 Yards	\$79.31	15J	11G	8X	View
Clallam	Power Equipment Operators	Scrapers - Concrete & Carry All	\$78.71	15J	11G	8X	View
Clallam	Power Equipment Operators	Scrapers, Self-propelled: 45 Yards And Over	\$80.02	15J	11G	8X	View
Clallam	Power Equipment Operators	Service Engineers: Equipment	\$78.71	15J	11G	8X	View
Clallam	Power Equipment Operators	Shotcrete/Gunite Equipment	\$75.26	15J	11G	8X	View
Clallam	Power Equipment Operators	Shovel, Excavator, Backhoe, Tractors Under 15 Metric Tons	\$78.71	15J	11G	8X	View
Clallam	Power Equipment Operators	Shovel, Excavator, Backhoe: Over 30 Metric Tons To 50	\$80.02	15J	11G	8X	View

		Metric Tons					
Clallam	Power Equipment Operators	Shovel, Excavator, Backhoes, Tractors: 15 To 30 Metric Tons	\$79.31	15J	11G	8X	View
Clallam	Power Equipment Operators	Shovel, Excavator, Backhoes: Over 50 Metric Tons To 90 Metric Tons	\$80.82	15J	11G	8X	View
Clallam	Power Equipment Operators	Shovel, Excavator, Backhoes: Over 90 Metric Tons	\$81.65	15J	11G	8X	View
Clallam	Power Equipment Operators	Slipform Pavers	\$80.02	15J	11G	8X	View
Clallam	Power Equipment Operators	Spreader, Topsider & Screedman	\$80.02	15J	11G	8X	View
Clallam	Power Equipment Operators	Subgrader Trimmer	\$79.31	15J	11G	8X	View
Clallam	Power Equipment Operators	Tower Bucket Elevators	\$78.71	15J	11G	8X	View
Clallam	Power Equipment Operators	Tower Crane: over 175' through 250' in height, base to boom	\$81.69	7A	11H	8X	View
Clallam	Power Equipment Operators	Tower crane: up to 175' in height base to boom	\$80.86	7A	11H	8X	View
Clallam	Power Equipment Operators	Tower Cranes: over 250' in height from base to boom	\$82.49	7A	11H	8X	View
Clallam	Power Equipment Operators	Transporters, All Track Or Truck Type	\$80.02	15J	11G	8X	View
Clallam	Power Equipment Operators	Trenching Machines	\$78.71	15J	11G	8X	View
Clallam	Power Equipment Operators	Truck Crane Oiler/Driver: 100 tons and over	\$79.35	7A	11H	8X	View
Clallam	Power Equipment Operators	Truck crane oiler/driver: under 100 tons	\$78.74	7A	11H	8X	View
Clallam	Power Equipment Operators	Truck Mount Portable Conveyor	\$79.31	15J	11G	8X	View
Clallam	Power Equipment Operators	Vac Truck (Vactor Guzzler, Hydro Excavator)	\$79.31	15J	11G	8X	View
Clallam	Power Equipment Operators	Welder	\$80.02	15J	11G	8X	View
Clallam	Power Equipment Operators	Wheel Tractors, Farmall Type	\$75.26	15J	11G	8X	View
Clallam	Power Equipment Operators	Yo Yo Pay Dozer	\$79.31	15J	11G	8X	View
Clallam	Power Equipment Operators-Underground Sewer & Water	Asphalt Plant Operators	\$80.02	15J	11G	8X	View
Clallam	Power Equipment Operators-Underground Sewer & Water	Assistant Engineer	\$75.26	15J	11G	8X	View
Clallam	Power Equipment Operators-Underground Sewer & Water	Barrier Machine (zipper)	\$79.31	15J	11G	8X	View
Clallam	Power Equipment Operators-Underground Sewer & Water	Batch Plant Operator, Concrete	\$79.31	15J	11G	8X	View
Clallam	Power Equipment Operators-Underground Sewer & Water	Boat Operator	\$80.05	7A	11H	8X	View
Clallam	Power Equipment Operators-Underground Sewer & Water	Bobcat	\$75.26	15J	11G	8X	View
Clallam	Power Equipment Operators-Underground Sewer & Water	Brokk - Remote Demolition Equipment	\$75.26	15J	11G	8X	View
Clallam	Power Equipment Operators-Underground Sewer & Water	Brooms	\$75.26	15J	11G	8X	View
Clallam	Power Equipment Operators-Underground Sewer & Water	Bump Cutter	\$79.31	15J	11G	8X	View
Clallam	Power Equipment Operators-Underground Sewer & Water	Cableways	\$80.02	15J	11G	8X	View

Clallam	Power Equipment Operators-Underground Sewer & Water	Chipper	\$79.31	15J	11G	8X	View
Clallam	Power Equipment Operators-Underground Sewer & Water	Compressor	\$75.26	15J	11G	8X	View
Clallam	Power Equipment Operators-Underground Sewer & Water	Concrete Finish Machine - Laser Screed	\$75.26	15J	11G	8X	View
Clallam	Power Equipment Operators-Underground Sewer & Water	Concrete Pump - Mounted Or Trailer High Pressure Line Pump, Pump High Pressure	\$78.71	15J	11G	8X	View
Clallam	Power Equipment Operators-Underground Sewer & Water	Concrete Pump: Truck Mount With Boom Attachment Over 42 M	\$80.02	15J	11G	8X	View
Clallam	Power Equipment Operators-Underground Sewer & Water	Concrete Pump: Truck Mount With Boom Attachment Up To 42m	\$79.31	15J	11G	8X	View
Clallam	Power Equipment Operators-Underground Sewer & Water	Conveyors	\$78.71	15J	11G	8X	View
Clallam	Power Equipment Operators-Underground Sewer & Water	Cranes Friction: 200 tons and over	\$82.49	7A	11H	8X	View
Clallam	Power Equipment Operators-Underground Sewer & Water	Cranes, A-frame: 10 tons and under	\$75.29	7A	11H	8X	View
Clallam	Power Equipment Operators-Underground Sewer & Water	Cranes: 100 tons through 199 tons, or 150' of boom (including jib with attachments)	\$80.86	7A	11H	8X	View
Clallam	Power Equipment Operators-Underground Sewer & Water	Cranes: 20 tons through 44 tons with attachments	\$79.35	7A	11H	8X	View
Clallam	Power Equipment Operators-Underground Sewer & Water	Cranes: 200 tons- 299 tons, or 250' of boom including jib with attachments	\$81.69	7A	11H	8X	View
Clallam	Power Equipment Operators-Underground Sewer & Water	Cranes: 300 tons and over or 300' of boom including jib with attachments	\$82.49	7A	11H	8X	View
Clallam	Power Equipment Operators-Underground Sewer & Water	Cranes: 45 tons through 99 tons, under 150' of boom(including jib with attachments)	\$80.05	7A	11H	8X	View
Clallam	Power Equipment Operators-Underground Sewer & Water	Cranes: Friction cranes through 199 tons	\$81.69	7A	11H	8X	View
Clallam	Power Equipment Operators-Underground Sewer & Water	Cranes: through 19 tons with attachments, a-frame over 10 tons	\$78.74	7A	11H	8X	View
Clallam	Power Equipment Operators-Underground Sewer & Water	Crusher	\$79.31	15J	11G	8X	View
Clallam	Power Equipment Operators-Underground Sewer & Water	Deck Engineer /Deck Winches (power)	\$79.31	15J	11G	8X	View
Clallam	Power Equipment Operators-Underground Sewer & Water	Derricks, On Building Work	\$80.02	15J	11G	8X	View
Clallam	Power Equipment Operators-Underground Sewer & Water	Dozers D-9 & Under	\$78.71	15J	11G	8X	View
Clallam	Power Equipment Operators-Underground Sewer & Water	Drill Oilers: Auger Type, Truck Or Crane Mount	\$78.71	15J	11G	8X	View
Clallam	Power Equipment Operators-Underground Sewer & Water	Drilling Machine	\$80.82	15J	11G	8X	View

Clallam	Power Equipment Operators-Underground Sewer & Water	Elevator and man-lift: permanent and shaft type	\$75.26	15J	11G	8X	View
Clallam	Power Equipment Operators-Underground Sewer & Water	Finishing Machine, Bidwell And Gamaco & Similar Equipment	\$79.31	15J	11G	8X	View
Clallam	Power Equipment Operators-Underground Sewer & Water	Forklift: 3000 lbs and over with attachments	\$78.71	15J	11G	8X	View
Clallam	Power Equipment Operators-Underground Sewer & Water	Forklifts: under 3000 lbs. with attachments	\$75.26	15J	11G	8X	View
Clallam	Power Equipment Operators-Underground Sewer & Water	Grade Engineer: Using Blue Prints, Cut Sheets, Etc	\$79.31	15J	11G	8X	View
Clallam	Power Equipment Operators-Underground Sewer & Water	Gradechecker/Stakeman	\$75.26	15J	11G	8X	View
Clallam	Power Equipment Operators-Underground Sewer & Water	Guardrail Punch	\$79.31	15J	11G	8X	View
Clallam	Power Equipment Operators-Underground Sewer & Water	Hard Tail End Dump Articulating Off- Road Equipment 45 Yards. & Over	\$80.02	15J	11G	8X	View
Clallam	Power Equipment Operators-Underground Sewer & Water	Hard Tail End Dump Articulating Off-road Equipment Under 45 Yards	\$79.31	15J	11G	8X	View
Clallam	Power Equipment Operators-Underground Sewer & Water	Horizontal/Directional Drill Locator	\$78.71	15J	11G	8X	View
Clallam	Power Equipment Operators-Underground Sewer & Water	Horizontal/Directional Drill Operator	\$79.31	15J	11G	8X	View
Clallam	Power Equipment Operators-Underground Sewer & Water	Hydralifts/boom trucks: 10 tons and under	\$75.29	7A	11H	8X	View
Clallam	Power Equipment Operators-Underground Sewer & Water	Hydralifts/boom trucks: over 10 tons	\$78.74	7A	11H	8X	View
Clallam	Power Equipment Operators-Underground Sewer & Water	Leverman	\$81.65	15J	11G	8X	View
Clallam	Power Equipment Operators-Underground Sewer & Water	Loader, Overhead, 6 Yards. But Not Including 8 Yards	\$80.02	15J	11G	8X	View
Clallam	Power Equipment Operators-Underground Sewer & Water	Loaders, Overhead Under 6 Yards	\$79.31	15J	11G	8X	View
Clallam	Power Equipment Operators-Underground Sewer & Water	Loaders, Plant Feed	\$79.31	15J	11G	8X	View
Clallam	Power Equipment Operators-Underground Sewer & Water	Loaders: Elevating Type Belt	\$78.71	15J	11G	8X	View
Clallam	Power Equipment Operators-Underground Sewer & Water	Locomotives, All	\$79.31	15J	11G	8X	View
Clallam	Power Equipment Operators-Underground Sewer & Water	Material Transfer Device	\$79.31	15J	11G	8X	View
Clallam	Power Equipment Operators-Underground Sewer & Water	Mechanics: All (Leadmen - \$0.50 per hour over mechanic)	\$80.82	15J	11G	8X	View
Clallam	Power Equipment Operators-Underground Sewer & Water	Motor Patrol Graders	\$80.02	15J	11G	8X	View
Clallam	Power Equipment Operators-Underground Sewer & Water	Mucking Machine, Mole, Tunnel Drill, Boring, Road Header And/or Shield	\$80.02	15J	11G	8X	View
Clallam	Power Equipment Operators-Underground Sewer & Water	Oil Distributors, Blower Distribution & Mulch Seeding Operator	\$75.26	15J	11G	8X	View

Clallam	Power Equipment Operators-Underground Sewer & Water	Outside Hoists (Elevators and Manlifts), Air Tuggers, Strato	\$78.71	15J	11G	8X	View
Clallam	Power Equipment Operators-Underground Sewer & Water	Overhead, bridge type Crane: 20 tons through 44 tons	\$79.35	7A	11H	8X	View
Clallam	Power Equipment Operators-Underground Sewer & Water	Overhead, bridge type: 100 tons and over	\$80.86	7A	11H	8X	View
Clallam	Power Equipment Operators-Underground Sewer & Water	Overhead, bridge type: 45 tons through 99 tons	\$80.05	7A	11H	8X	View
Clallam	Power Equipment Operators-Underground Sewer & Water	Pavement Breaker	\$75.26	15J	11G	8X	View
Clallam	Power Equipment Operators-Underground Sewer & Water	Pile Driver (other Than Crane Mount)	\$79.31	15J	11G	8X	View
Clallam	Power Equipment Operators-Underground Sewer & Water	Plant Oiler - Asphalt, Crusher	\$78.71	15J	11G	8X	View
Clallam	Power Equipment Operators-Underground Sewer & Water	Posthole Digger, Mechanical	\$75.26	15J	11G	8X	View
Clallam	Power Equipment Operators-Underground Sewer & Water	Power Plant	\$75.26	15J	11G	8X	View
Clallam	Power Equipment Operators-Underground Sewer & Water	Pumps - Water	\$75.26	15J	11G	8X	View
Clallam	Power Equipment Operators-Underground Sewer & Water	Quad 9, Hd 41, D10 And Over	\$80.02	15J	11G	8X	View
Clallam	Power Equipment Operators-Underground Sewer & Water	Quick Tower: no cab, under 100 feet in height base to boom	\$79.31	15J	11G	8X	View
Clallam	Power Equipment Operators-Underground Sewer & Water	Remote Control Operator On Rubber Tired Earth Moving Equipment	\$80.02	15J	11G	8X	View
Clallam	Power Equipment Operators-Underground Sewer & Water	Rigger and Bellman	\$75.29	7A	11H	8X	View
Clallam	Power Equipment Operators-Underground Sewer & Water	Rigger/Signal Person, Bellman(Certified)	\$78.74	7A	11H	8X	View
Clallam	Power Equipment Operators-Underground Sewer & Water	Rollagon	\$80.02	15J	11G	8X	View
Clallam	Power Equipment Operators-Underground Sewer & Water	Roller, Other Than Plant Mix	\$75.26	15J	11G	8X	View
Clallam	Power Equipment Operators-Underground Sewer & Water	Roller, Plant Mix Or Multi-lift Materials	\$78.71	15J	11G	8X	View
Clallam	Power Equipment Operators-Underground Sewer & Water	Roto-mill, Roto-grinder	\$79.31	15J	11G	8X	View
Clallam	Power Equipment Operators-Underground Sewer & Water	Saws - Concrete	\$78.71	15J	11G	8X	View
Clallam	Power Equipment Operators-Underground Sewer & Water	Scraper, Self Propelled Under 45 Yards	\$79.31	15J	11G	8X	View
Clallam	Power Equipment Operators-Underground Sewer & Water	Scrapers - Concrete & Carry All	\$78.71	15J	11G	8X	View
Clallam	Power Equipment Operators-Underground Sewer & Water	Scrapers, Self-propelled: 45 Yards And Over	\$80.02	15J	11G	8X	View
Clallam	Power Equipment Operators-Underground Sewer & Water	Shotcrete/Gunite Equipment	\$75.26	15J	11G	8X	View
Clallam	Power Equipment Operators-Underground Sewer & Water	Shovel, Excavator, Backhoe, Tractors Under 15 Metric Tons	\$78.71	15J	11G	8X	View

Clallam	Power Equipment Operators-Underground Sewer & Water	Shovel, Excavator, Backhoe: Over 30 Metric Tons To 50 Metric Tons	\$80.02	15J	11G	8X	View
Clallam	Power Equipment Operators-Underground Sewer & Water	Shovel, Excavator, Backhoes, Tractors: 15 To 30 Metric Tons	\$79.31	15J	11G	8X	View
Clallam	Power Equipment Operators-Underground Sewer & Water	Shovel, Excavator, Backhoes: Over 50 Metric Tons To 90 Metric Tons	\$80.82	15J	11G	8X	View
Clallam	Power Equipment Operators-Underground Sewer & Water	Shovel, Excavator, Backhoes: Over 90 Metric Tons	\$81.65	15J	11G	8X	View
Clallam	Power Equipment Operators-Underground Sewer & Water	Slipform Pavers	\$80.02	15J	11G	8X	View
Clallam	Power Equipment Operators-Underground Sewer & Water	Spreader, Topsider & Screedman	\$80.02	15J	11G	8X	View
Clallam	Power Equipment Operators-Underground Sewer & Water	Subgrader Trimmer	\$79.31	15J	11G	8X	View
Clallam	Power Equipment Operators-Underground Sewer & Water	Tower Bucket Elevators	\$78.71	15J	11G	8X	View
Clallam	Power Equipment Operators-Underground Sewer & Water	Tower Crane: over 175' through 250' in height, base to boom	\$81.69	7A	11H	8X	View
Clallam	Power Equipment Operators-Underground Sewer & Water	Tower crane: up to 175' in height base to boom	\$80.86	7A	11H	8X	View
Clallam	Power Equipment Operators-Underground Sewer & Water	Tower Cranes: over 250' in height from base to boom	\$82.49	7A	11H	8X	View
Clallam	Power Equipment Operators-Underground Sewer & Water	Transporters, All Track Or Truck Type	\$80.02	15J	11G	8X	View
Clallam	Power Equipment Operators-Underground Sewer & Water	Trenching Machines	\$78.71	15J	11G	8X	View
Clallam	Power Equipment Operators-Underground Sewer & Water	Truck Crane Oiler/Driver: 100 tons and over	\$79.35	7A	11H	8X	View
Clallam	Power Equipment Operators-Underground Sewer & Water	Truck crane oiler/driver: under 100 tons	\$78.74	7A	11H	8X	View
Clallam	Power Equipment Operators-Underground Sewer & Water	Truck Mount Portable Conveyor	\$79.31	15J	11G	8X	View
Clallam	Power Equipment Operators-Underground Sewer & Water	Vac Truck (Vactor Guzzler, Hydro Excavator)	\$79.31	15J	11G	8X	View
Clallam	Power Equipment Operators-Underground Sewer & Water	Welder	\$80.02	15J	11G	8X	View
Clallam	Power Equipment Operators-Underground Sewer & Water	Wheel Tractors, Farmall Type	\$75.26	15J	11G	8X	View
Clallam	Power Equipment Operators-Underground Sewer & Water	Yo Yo Pay Dozer	\$79.31	15J	11G	8X	View
Clallam	Power Line Clearance Tree Trimmers	Journey Level In Charge	\$57.22	5A	4A		View
Clallam	Power Line Clearance Tree Trimmers	Spray Person	\$54.32	5A	4A		View
Clallam	Power Line Clearance Tree Trimmers	Tree Equipment Operator	\$57.22	5A	4A		View
Clallam	Power Line Clearance Tree Trimmers	Tree Trimmer	\$51.18	5A	4A		View
Clallam	Power Line Clearance Tree Trimmers	Tree Trimmer Groundperson	\$38.99	5A	4A		View

Clallam	Refrigeration & Air Conditioning Mechanics	Journey Level	\$93.51	<u>6Z</u>	<u>1G</u>		View
Clallam	Residential Brick Mason	Journey Level	\$69.07	<u>7E</u>	<u>1N</u>		View
Clallam	Residential Carpenters	Journey Level	\$74.96	<u>15J</u>	<u>4C</u>		View
Clallam	Residential Cement Masons	Journey Level	\$59.07	<u>15J</u>	<u>11P</u>	<u>8Y</u>	View
Clallam	Residential Drywall Applicators	Journey Level	\$49.92	<u>15J</u>	<u>4C</u>		View
Clallam	Residential Drywall Tapers	Journey Level	\$39.13		<u>1</u>		View
Clallam	Residential Electricians	Journey Level	\$39.64		<u>1</u>		View
Clallam	Residential Glaziers	Journey Level	\$20.00		<u>1</u>		View
Clallam	Residential Insulation Applicators	Journey Level	\$15.74		<u>1</u>		View
Clallam	Residential Laborers	Journey Level	\$20.00		<u>1</u>		View
Clallam	Residential Marble Setters	Journey Level	\$69.07	<u>7E</u>	<u>1N</u>		View
Clallam	Residential Painters	Journey Level	\$51.71	<u>6Z</u>	<u>11J</u>		View
Clallam	Residential Plumbers & Pipefitters	Journey Level	\$60.50	<u>5A</u>	<u>1G</u>		View
Clallam	Residential Refrigeration & Air Conditioning Mechanics	Journey Level	\$60.50	<u>5A</u>	<u>1G</u>		View
Clallam	Residential Sheet Metal Workers	Journey Level	\$24.80		<u>1</u>		View
Clallam	Residential Soft Floor Layers	Journey Level	\$20.00		<u>1</u>		View
Clallam	Residential Sprinkler Fitters (Fire Protection)	Journey Level	\$25.41		<u>1</u>		View
Clallam	Residential Stone Masons	Journey Level	\$69.07	<u>7E</u>	<u>1N</u>		View
Clallam	Residential Terrazzo Workers	Journey Level	\$15.74		<u>1</u>		View
Clallam	Residential Terrazzo/Tile Finishers	Journey Level	\$15.74		<u>1</u>		View
Clallam	Residential Tile Setters	Journey Level	\$20.79		<u>1</u>		View
Clallam	Roofers	Journey Level	\$61.95	<u>5A</u>	<u>3H</u>		View
Clallam	Roofers	Using Irritable Bituminous Materials	\$64.95	<u>5A</u>	<u>3H</u>		View
Clallam	Sheet Metal Workers	Journey Level (Field or Shop)	\$96.42	<u>7F</u>	<u>1E</u>		View
Clallam	Shipbuilding & Ship Repair	New Construction Boilermaker	\$51.85	<u>7X</u>	<u>4J</u>		View
Clallam	Shipbuilding & Ship Repair	New Construction Carpenter	\$51.85	<u>7X</u>	<u>4J</u>		View
Clallam	Shipbuilding & Ship Repair	New Construction Crane Operator	\$41.83	<u>7V</u>	<u>1</u>		View
Clallam	Shipbuilding & Ship Repair	New Construction Electrician	\$51.85	<u>7X</u>	<u>4J</u>		View
Clallam	Shipbuilding & Ship Repair	New Construction Heat & Frost Insulator	\$87.15	<u>15H</u>	<u>11C</u>		View
Clallam	Shipbuilding & Ship Repair	New Construction Laborer	\$51.85	<u>7X</u>	<u>4J</u>		View
Clallam	Shipbuilding & Ship Repair	New Construction Machinist	\$51.85	<u>7X</u>	<u>4J</u>		View
Clallam	Shipbuilding & Ship Repair	New Construction Operating Engineer	\$41.83	<u>7V</u>	<u>1</u>		View
Clallam	Shipbuilding & Ship Repair	New Construction Painter	\$51.95	<u>7X</u>	<u>4J</u>		View
Clallam	Shipbuilding & Ship Repair	New Construction Pipefitter	\$51.85	<u>7X</u>	<u>4J</u>		View
Clallam	Shipbuilding & Ship Repair	New Construction Rigger	\$51.85	<u>7X</u>	<u>4J</u>		View
Clallam	Shipbuilding & Ship Repair	New Construction Sheet Metal	\$51.85	<u>7X</u>	<u>4J</u>		View
Clallam	Shipbuilding & Ship Repair	New Construction Shipwright	\$51.85	<u>7X</u>	<u>4J</u>		View

Clallam	Shipbuilding & Ship Repair	New Construction Warehouse/Teamster	\$41.83	<u>7V</u>	1		View
Clallam	Shipbuilding & Ship Repair	New Construction Welder / Burner	\$51.85	<u>7X</u>	<u>4J</u>		View
Clallam	Shipbuilding & Ship Repair	Ship Repair Boilermaker	\$51.85	<u>7X</u>	<u>4J</u>		View
Clallam	Shipbuilding & Ship Repair	Ship Repair Carpenter	\$51.85	<u>7X</u>	<u>4J</u>		View
Clallam	Shipbuilding & Ship Repair	Ship Repair Crane Operator	\$45.06	<u>7Y</u>	<u>4K</u>		View
Clallam	Shipbuilding & Ship Repair	Ship Repair Electrician	\$51.85	<u>7X</u>	<u>4J</u>		View
Clallam	Shipbuilding & Ship Repair	Ship Repair Heat & Frost Insulator	\$87.15	<u>15H</u>	<u>11C</u>		View
Clallam	Shipbuilding & Ship Repair	Ship Repair Laborer	\$51.85	<u>7X</u>	<u>4J</u>		View
Clallam	Shipbuilding & Ship Repair	Ship Repair Machinist	\$51.85	<u>7X</u>	<u>4J</u>		View
Clallam	Shipbuilding & Ship Repair	Ship Repair Operating Engineer	\$45.06	<u>7Y</u>	<u>4K</u>		View
Clallam	Shipbuilding & Ship Repair	Ship Repair Painter	\$51.95	<u>7X</u>	<u>4J</u>		View
Clallam	Shipbuilding & Ship Repair	Ship Repair Pipefitter	\$51.85	<u>7X</u>	<u>4J</u>		View
Clallam	Shipbuilding & Ship Repair	Ship Repair Rigger	\$51.85	<u>7X</u>	<u>4J</u>		View
Clallam	Shipbuilding & Ship Repair	Ship Repair Sheet Metal	\$51.85	<u>7X</u>	<u>4J</u>		View
Clallam	Shipbuilding & Ship Repair	Ship Repair Shipwright	\$51.85	<u>7X</u>	<u>4J</u>		View
Clallam	Shipbuilding & Ship Repair	Ship Repair Warehouse / Teamster	\$45.06	<u>7Y</u>	<u>4K</u>		View
Clallam	Sign Makers & Installers (Electrical)	Journey Level	\$58.04	<u>0</u>	1		View
Clallam	Sign Makers & Installers (Non-Electrical)	Journey Level	\$37.08	<u>0</u>	1		View
Clallam	Soft Floor Layers	Journey Level	\$66.32	<u>15J</u>	<u>4C</u>		View
Clallam	Solar Controls For Windows	Journey Level	\$15.74		1		View
Clallam	Sprinkler Fitters (Fire Protection)	Journey Level	\$72.57	<u>7J</u>	<u>1R</u>		View
Clallam	Stage Rigging Mechanics (Non Structural)	Journey Level	\$15.74		1		View
Clallam	Stone Masons	Journey Level	\$69.07	<u>7E</u>	<u>1N</u>		View
Clallam	Street And Parking Lot Sweeper Workers	Journey Level	\$16.00		1		View
Clallam	Surveyors	Assistant Construction Site Surveyor	\$78.74	<u>7A</u>	<u>11H</u>	<u>8X</u>	View
Clallam	Surveyors	Chainman	\$75.29	<u>7A</u>	<u>11H</u>	<u>8X</u>	View
Clallam	Surveyors	Construction Site Surveyor	\$80.05	<u>7A</u>	<u>11H</u>	<u>8X</u>	View
Clallam	Surveyors	Drone Operator (when used in conjunction with survey work only)	\$75.29	<u>7A</u>	<u>11H</u>	<u>8X</u>	View
Clallam	Surveyors	Ground Penetrating Radar Operator	\$75.29	<u>7A</u>	<u>11H</u>	<u>8X</u>	View
Clallam	Telecommunication Technicians	Journey Level	\$63.38	<u>7E</u>	<u>1E</u>		View
Clallam	Telephone Line Construction - Outside	Cable Splicer	\$40.11	<u>5A</u>	<u>2B</u>		View
Clallam	Telephone Line Construction - Outside	Hole Digger/Ground Person	\$26.67	<u>5A</u>	<u>2B</u>		View
Clallam	Telephone Line Construction - Outside	Telephone Equipment Operator (Light)	\$33.49	<u>5A</u>	<u>2B</u>		View

Clallam	Telephone Line Construction - Outside	Telephone Lineperson	\$37.90	5A	2B		View
Clallam	Terrazzo Workers	Journey Level	\$62.36	7E	1N		View
Clallam	Tile Setters	Journey Level	\$62.36	7E	1N		View
Clallam	Tile, Marble & Terrazzo Finishers	Finisher	\$53.19	7E	1N		View
Clallam	Traffic Control Stripers	Journey Level	\$89.54	15L	1K		View
Clallam	Truck Drivers	Asphalt Mix Over 16 Yards	\$74.20	15J	11M	8L	View
Clallam	Truck Drivers	Asphalt Mix To 16 Yards	\$73.36	15J	11M	8L	View
Clallam	Truck Drivers	Dump Truck	\$73.36	15J	11M	8L	View
Clallam	Truck Drivers	Dump Truck & Trailer	\$74.20	15J	11M	8L	View
Clallam	Truck Drivers	Other Trucks	\$74.20	15J	11M	8L	View
Clallam	Truck Drivers - Ready Mix	Transit Mix	\$74.20	15J	11M	8L	View
Clallam	Well Drillers & Irrigation Pump Installers	Irrigation Pump Installer	\$15.74		1		View
Clallam	Well Drillers & Irrigation Pump Installers	Oiler	\$15.74		1		View
Clallam	Well Drillers & Irrigation Pump Installers	Well Driller	\$15.74		1		View



CONTRACTOR SAFETY PLAN

1. The District is committed to provide a safe environment for employees and contract personnel.
2. The District is committed to support contractors' efforts to ensure an effective safety program.
3. To ensure that we meet the above statements, the District will require the awarded bid contractor to follow the requirements below.

CONTRACTOR REQUIREMENTS

- The Contractor will conduct and document a regular daily safety meeting with its employees on the job site. These documents must be kept on the job site for review by the Contractor, District, or any governmental safety agency.
- The Contractor will designate a competent safety coordinator working on the job site.
- The Contractor will immediately report all serious injury or property damage accidents and conduct a full investigation with documentation for review with the District and other governmental safety agencies as may be required by law.
- The Contractor must furnish all safety equipment and tools for its employees to safely do the job and comply with all applicable safety standards.
- The Contractor must take reasonable steps to establish work rules that are designed to prevent violations of the Washington Industrial Safety and Health Act standards and adequately communicate those rules to its employees; for example, safety meetings, tailboard meetings, new-employee orientation, accident prevention program.
- The Contractor must have documentation that its safety program has been effective in practice; for example, written records, safety meetings (with names and subject matters), and records of corrected hazards.
- Prior to the commencement of work on an electric system, a safety orientation and information transfer briefing shall be performed incorporating the requirements of WAC 296-45-067 and WAC 296-45-075. At a minimum, this briefing shall be attended by the contract Foreman and/or Superintendent in charge of each contract crew performing work, and the designated District's Representative(s) responsible for oversight of the work.

The District holds these requirements to be binding with award of the bid.