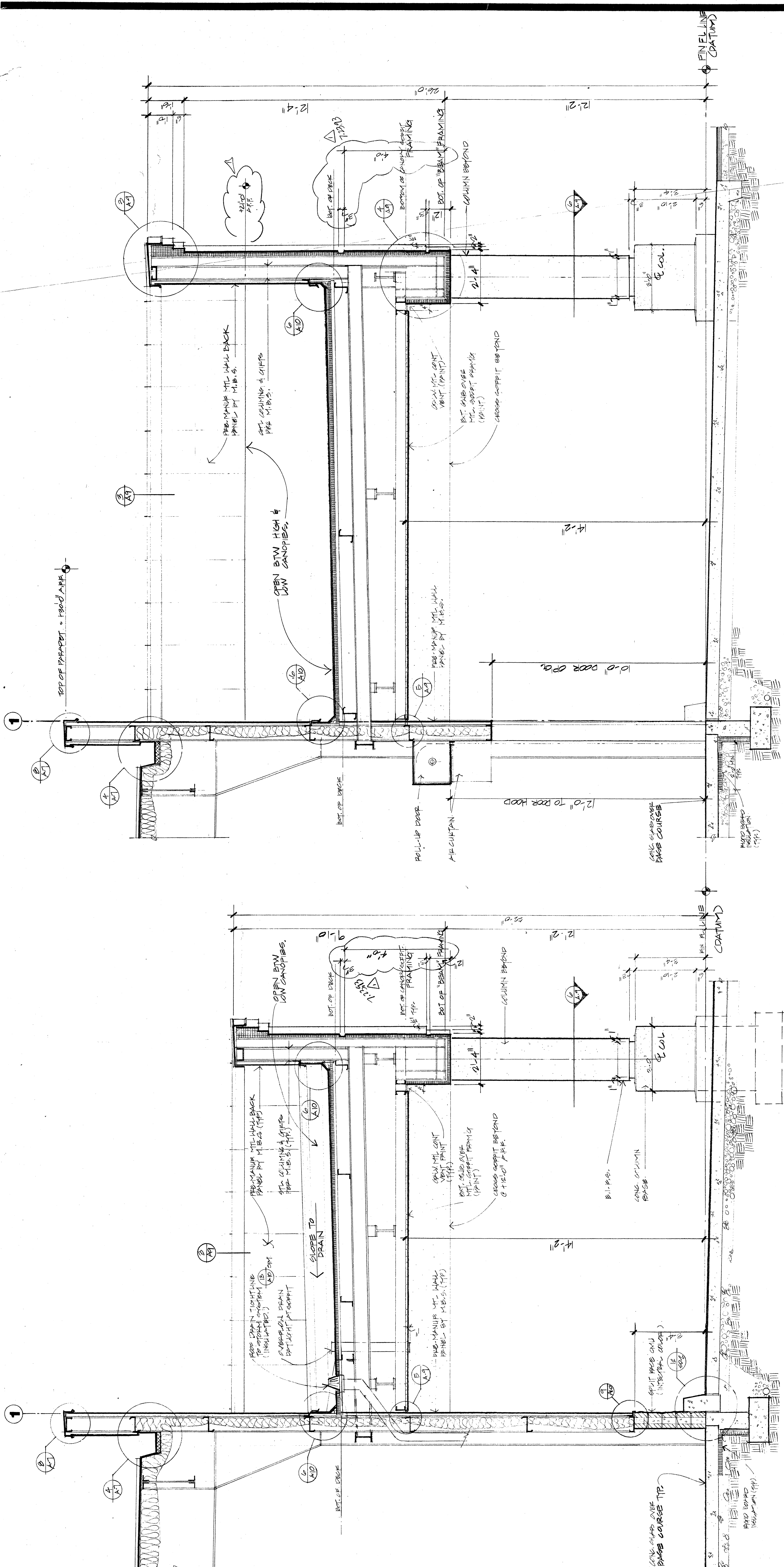


4-6-93	SUBMITTED FOR DME/TENANT APPROVAL
4-6-93	SUBMITTED FOR BUILDING PERMIT
4-16-93	REVISIONS
5-17-93	MEETING/TENANT CORRECTIONS
5-17-93	BUILDING PERMIT CORRECTIONS
5-17-93	CONSTRUCTION DRAWINGS
AS-BUILT DRAWINGS	

DATE	
CHECKED	
DRAWN	

DOUGLAS MULVANNY & ASSOCIATES  
 Architects  
 1200 Northup Way • Bellevue, WA 98005  
 DOUGLAS MULVANNY • LEE  
 2091 861 7900  
 DOUGLAS MULVANNY  
 2091 869 2963  
 JERRY QUINN LEE

CLALLAM COUNTY, WASHINGTON  
 HOOKER ROAD & HIGHWAY 101  
**Costco**  
 WHOLESALE

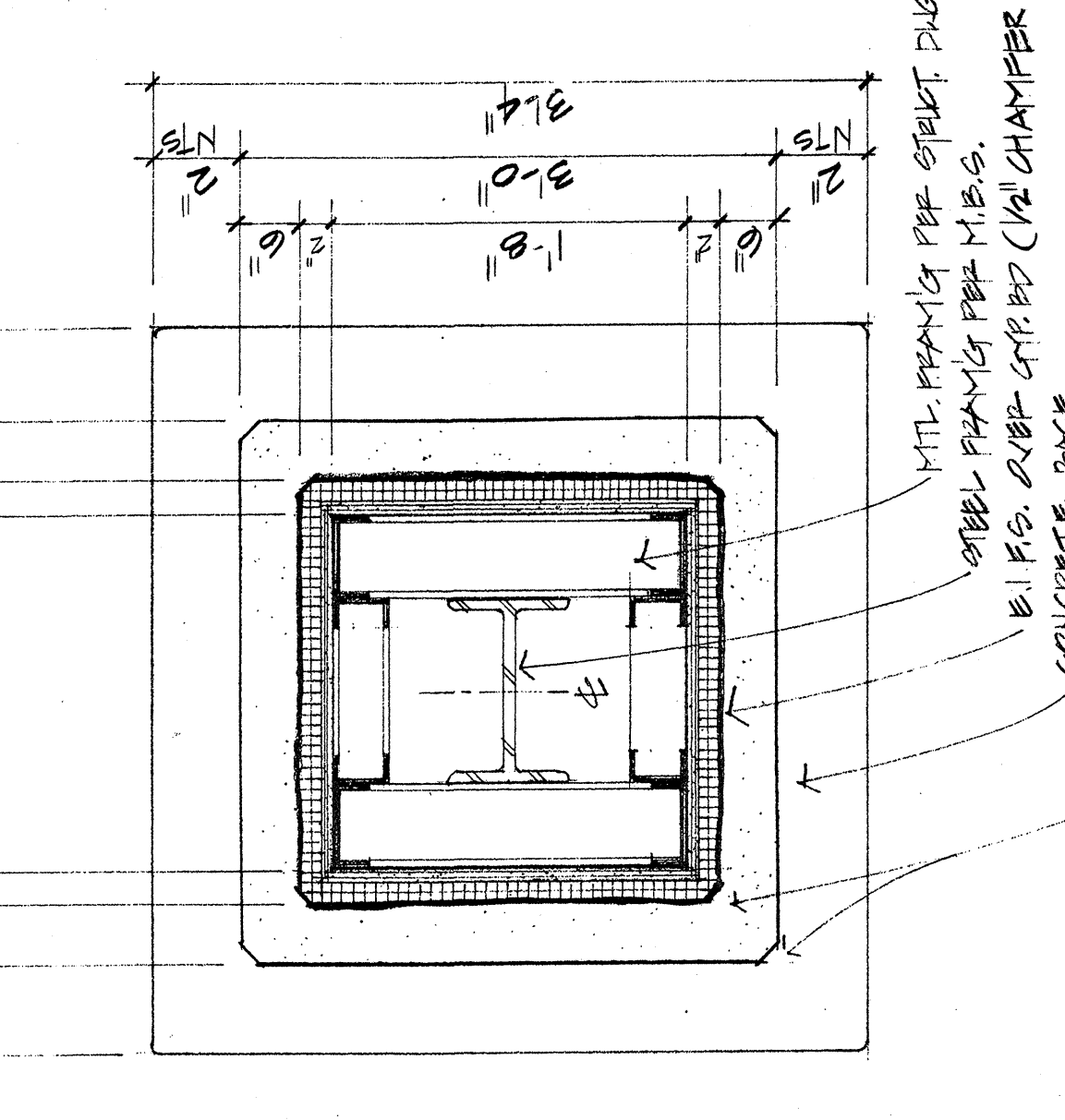
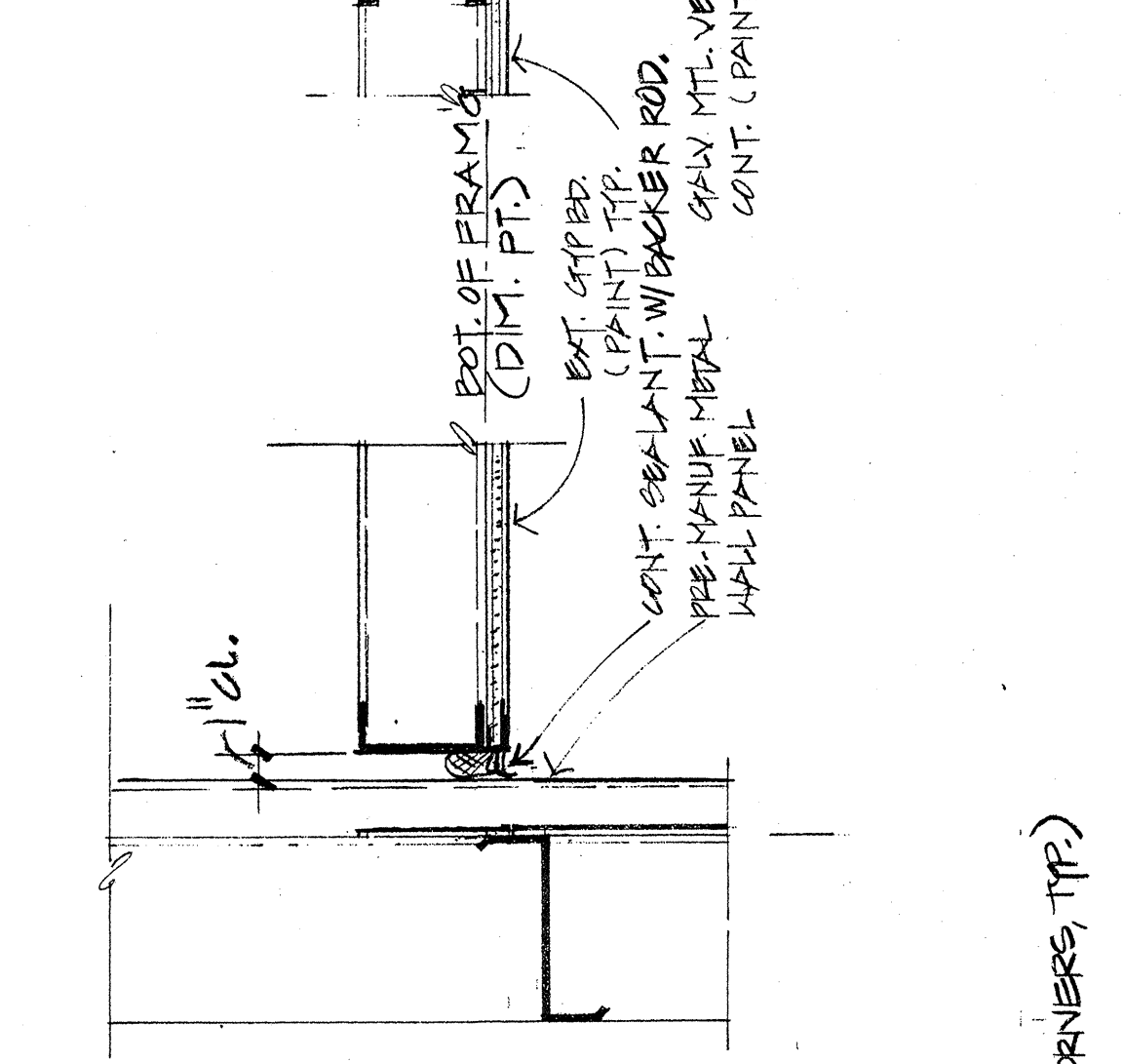
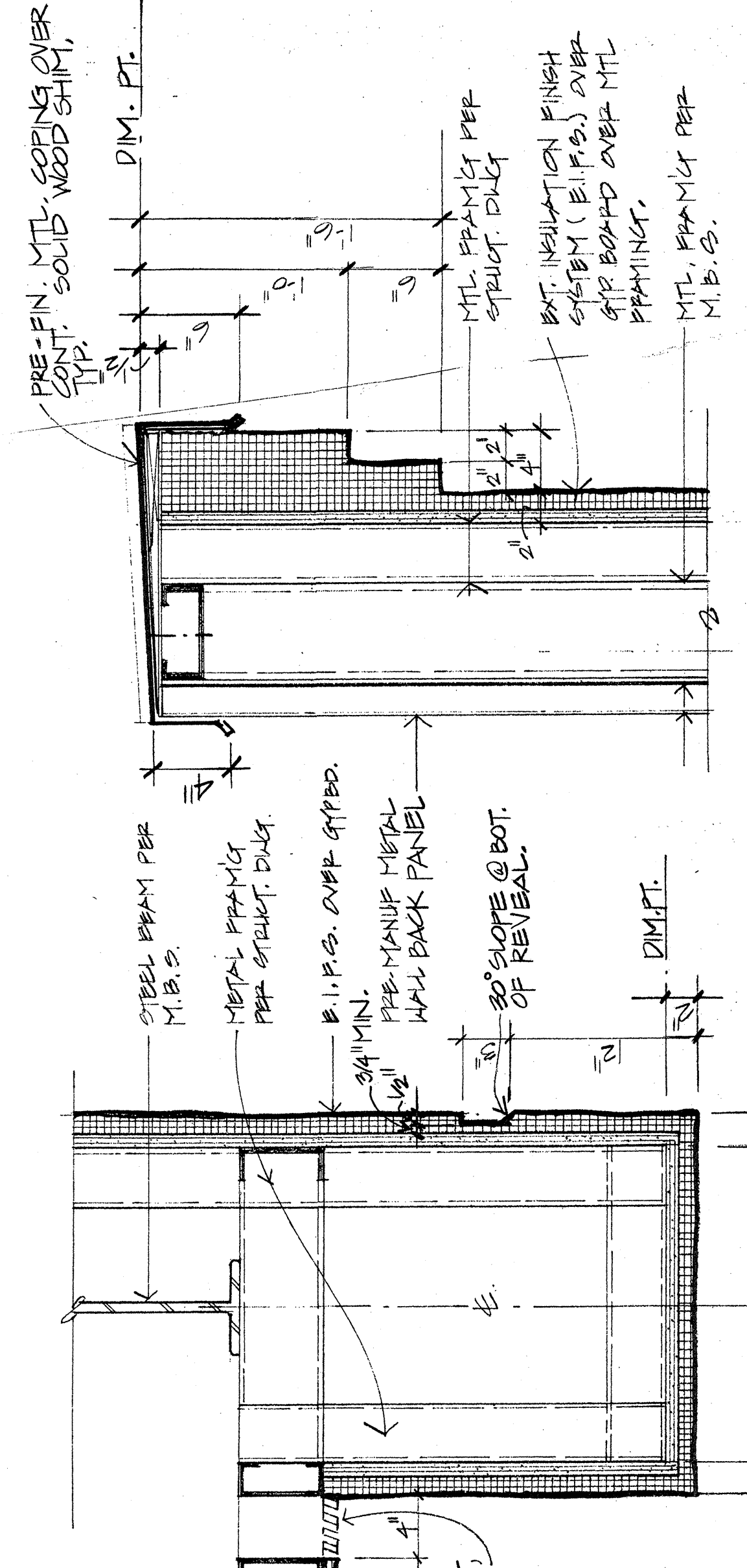


**1** CANOPY SECTION  
 1/2" = 1'-0"

**2** CANOPY SECTION  
 1/2" = 1'-0"

**ELEVATION**

**ISOMETRIC**



**3** PARAPET DETAIL  
 1/2" = 1'-0"

**4** SOFFIT DETAIL  
 1/2" = 1'-0"

**5** SOFFIT DETAIL  
 1/2" = 1'-0"

**6** COLUMN DETAIL  
 1" = 1'-0"

**7** CORNICE @ COL. DTL.  
 1 1/2" = 1'-0"