

HOTLINE

Winter 2009

A Publication of Public Utility District No. 1
Clallam County, Washington



PUD Mission Statement

To provide reliable, efficient, safe, and low-cost utility services in a financially and environmentally responsible manner.

1945-2009: Sixty-five Years of Service



Olympic Power Line Crew circa 1914
Stringing 65 kV transmission line from the Elwha Dam towards Port Townsend.



Clallam County PUD Line Crew, 2008
Continuing a long tradition of exceptional service and dedication rain, snow or shine.

We've come a long way in sixty-five short years.

After a somewhat rocky start in the 1940's, we've grown to become Washington State's tenth largest Public Utility with 145 employees serving 30,000 customers across 2,000 square miles of service area, providing reliable, low cost electrical, water and broadband services together with one of the most successful energy conservation programs in the Northwest. Though much has changed in 65 years - with yet more change on the horizon - one thing remains the same: we are your PUD, and we'll continue to serve your best interests to the best of our ability in a financially and environmentally responsible manner.

Did you know???

A frosty roof likely covers a well-insulated ceiling. The next time you head out on a frosty morning, take a look at the roofs in your neighborhood to see if you can spot the ones with inadequate insulation. *Hint:* they'll be frost free -- or nearly so. Tell your friends and neighbors how they can get a frosty roof by participating in our insulation incentive program.

If you shut off or greatly reduce heat to interior rooms to conserve heat in the winter, it's likely you'll be using those energy savings later to pay for mold / mildew / pest removal and/or structural damage repairs. To prevent moisture damage to your home: 1) keep rooms heated at 60° or higher; and/or 2) use a properly-sized ENERGY STAR® Dehumidifier.



Student Science Competition

Lights, Camera, Conservation!

Attention all 7th - 10th Grade Clallam County Students!

Enter your 2-3 minute video(s) on creative and effective ways to save energy at school to win great prizes.

Entry Deadline: March 2nd, 2009
Event Date: Sat., March 21st, 2009

For details, visit the event website:
www.clallampud.net/SSC2009

Board of Commissioners

Our Board holds public meetings most Mondays at 1:30 p.m. at the Port Angeles office, 2431 East Highway 101. Call (360) 565-3231 or (800) 542-7859 for more information.

- District 1: Will Purser**
- District 2: Hugh Haffner**
- District 3: Ted Simpson**
- General Manager: Doug Nass**

The PUD's electricity comes from the following fuel mix:

Coal	2.53%
Hydroelectric	84.59%
Landfill gas	1.26%
Natural Gas	1.05%
Nuclear	10.36%
Other	0.21%
TOTAL	100.00%

Watts Green

We are committed to the development of clean renewable energy resources. If you would like to support this effort, contact your local PUD office to sign up for our Watts Green program.

PUD OFFICES

- Port Angeles: (360) 452-9771**
- Sequim: (360) 452-9771**
- Forks: (360) 374-6201**
- Seku: (360) 963-2223**
- Toll-free: (800) 542-7859**
- Utility Services: (360) 565-3249**

P. O. Box 1090 • Port Angeles, WA 98362
E-mail: info@clallampud.net
Website: www.clallampud.net

Need help?
... but don't know where to call?



Peninsulas'



Get Connected. Get Answers.

Employment Support

Utility Bill Help

Medical Care Questions

Volunteer Opportunities

Mental Health Services

In-kind Donations

Senior Assistance

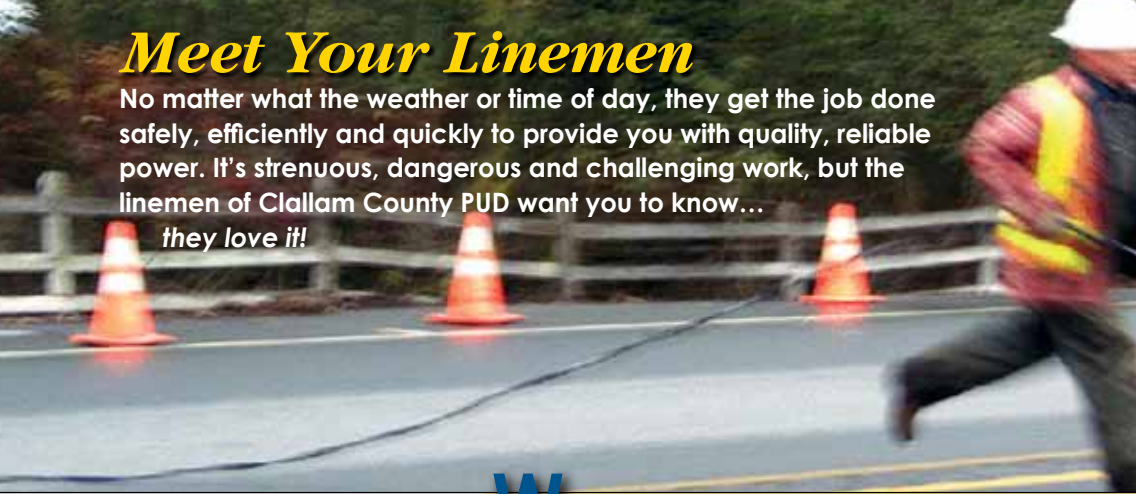
Domestic Violence Help

Shelter Needs

Food Resources

Meet Your Linemen

No matter what the weather or time of day, they get the job done safely, efficiently and quickly to provide you with quality, reliable power. It's strenuous, dangerous and challenging work, but the linemen of Clallam County PUD want you to know... *they love it!*



Watching a PUD line crew in action brings to mind words like *focused, efficient, speedy and impressive*. Buzzed by yellow jackets 30 feet above ground and speeding semi's along the highway, these guys work smart and *hustle*, darting up and down poles, embankments and ditches like triathletes half their age. Always in motion, yet focused and meticulous with safety foremost in mind, your PUD linemen put the "E" in *efficiency* and "T" in *teamwork*.

When a recent car-pole accident along Highway 101 required the replacement of the damaged pole and power line, the line crew also took the opportunity to quickly replace a 70 year old decaying pole and faulty transformer on the opposite side of the highway, accomplishing three projects *simultaneously*. The projects required stopping traffic in both directions on 101 to run (and securely install) the replacement power line across the highway (see top photo). One might imagine that it would take 10/15/20 minutes to accomplish this last task, *but one would be wrong*. It took 40 seconds, and *they made it look easy*.

Linemen FAQ's

What do you love about your job?

Helping people, troubleshooting and fixing problems. Being outdoors. Seeing lights go on after long hours working storms. People cheer; we love that.

What don't customers know about your job?

We have to be pretty versatile; jacks of all trades. We do preventative maintenance day-to-day...

What is the most challenging aspect of your job?

Dealing with the unexpected in the midst of changing weather, road and traffic conditions.

What can customers do to help make your job safer?

PLEASE keep transformer/pole/meter areas clear. **Slow down** when driving in work zones. During an outage, leave just one tell-tale light on to tell you when power is on. It's hard to get power lines fully charged again when folks have all their electricity on.

How does your family feel about your job?

They worry about us during storms. Our families remind us everyday to be safe.

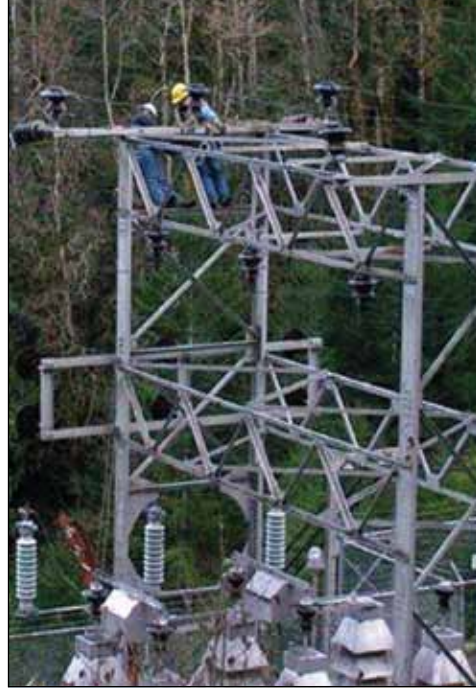
Would you encourage others to become linemen?

Yes! It's a very rewarding trade if you are up to the physical demands. Jobs are available everywhere.



Bucket Truck Tools of the Trade:

1. **Jib Hoist:** Lifts transformers, crossarms, etc.
2. **Tool Compartment:** Stores hot sticks.
3. **Deadend Clamp:** Secures tri-plex wire.
4. **Wire:** Ties conductors to insulators.
5. **Sledge Hammer:** Drives ground rods into the ground.
6. **Vice:** A bad habit (*a bit of lineman humor*).
7. **High Voltage Gloves**
8. **Transformer:** Reduces 7,200V distribution voltage to household 240/120V.
9. **Chainsaw:** Clears trees and branches from lines and cuts poles.
10. **Tool Bag**
11. **Downrigger Control:** Lowers truck stabilizers.



Occupational Forecast*:

Electric Power Journeyman Lineman

- Current # of U.S. jobs: **112,000**
- # Jobs by 2016: **120,000**
- Average age of workers: **43.7**
Half of baby boomers will reach retirement age within 5 years.
- Job outlook: **Very good**
- U.S. median wage for electric transmission and distribution journeyman linemen is **\$26/hr**
- Current # of Clallam County PUD journeymen linemen: **22**
apprentice linemen: **2**

*According to Bureau of Labor Statistics for 2006.



Lineman Lingo

- Deadman** - Anchor
- Pie Knife** - Bolt Cutter
- Shoo-fly** - Bypass Line

Bug, Fargo, Blue Dot, Double Deuce, Deuce Bug, Big Bug - Connector (Sizes)

Peanut, Acorn - Ground Rod Clamp

Hog Wagon - Temporary Transformer (often on a small trailer)

Skippy - Rest Break

Thumper - Surge Generator

Pot, Kettle, Bug, Stepper - Transformer

Dog Bone, Johnny Ball - Guy Wire Insulator.

For more information: www.njatc.org
www.bls.gov/oco/ocos.195.htm