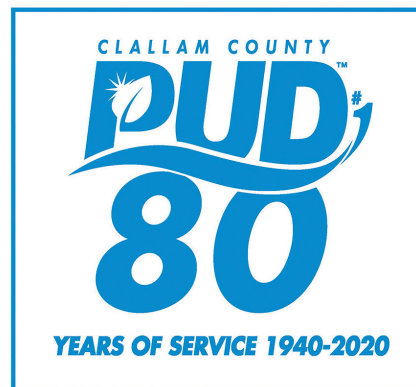




PUD Day on the Hill in Olympia, sharing the PUD message.



Commissioner David Anderson serves coffee during PUD Day on the Hill in Olympia.



New fence and landscaping completes the community solar project.

## INSIDE:

MESSAGE FROM GENERAL MANAGER .....	PAGE 2
COVID-19 / PAYMENT OPTIONS .....	PAGE 3
2020 ENGINEERING PROJECTS .....	PAGE 4-5
CENSUS 2020 / ELECTRIC VEHICLE RESOURCE .....	PAGE 6-7
YOUR UTILITY .....	PAGE 8

Clallam County PUD  
 PO Box 1000  
 Carlsborg, WA 98324

Postal Customer

PRSRT STD  
 U.S. Postage  
 PAID  
 Olympic Mailing  
 Services  
 ECRWSS



DOUG NASS

# From the General Manager

## Dear Customers,

At the time of this writing, the COVID-19 coronavirus has not yet reached Clallam County.

At the District, we have been preparing for this event. Our facilities are currently closed to customer traffic. We will be continually updating our website with information as it affects you.

Inside this edition we list a variety of options for you to do business with us without coming into an office location. We are taking this seriously for our customers' health, as well as to protect our employees so that we may remain as close to fully staffed as possible in order to continue to provide you with excellent service.

On a more positive note, we have launched new dedicated page on our website about electric vehicles. This page contains robust information, tools, and calculators to help you learn about electric vehicles and decide which model is right for you. Find out more on page 7.

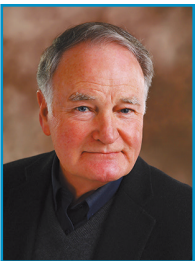
I wish you good health during this challenging time.

As we always say – "Be Safe"!

Doug Nass, General Manager

## Commissioners

Clallam County Public Utility District #1 is directed by a three-member board of commissioners elected by the citizens of the county. Our Board holds public meetings the 2nd and 4th Mondays monthly at 1:30 p.m. at our Carlsborg Main Office.



**Will Purser**  
*President, District #1*

Will Purser has served as District 1 PUD Commissioner since appointment in April 2001. He represents the 1st District, which is the Eastern part of the County. Commissioner Purser recognizes that the issues of energy, water, and waste disposal are critical to the quality of life of Clallam

County residents now and in the future. He also serves on the Energy Northwest Board of Directors' Executive Board. Energy Northwest is a Joint Operating Agency of 28 public utilities operating nuclear, hydroelectric, wind, and solar projects.

[wepurser@clallampud.net](mailto:wepurser@clallampud.net) • 360-565-3512

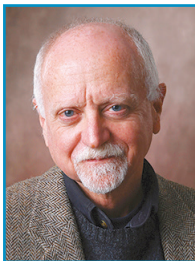


**David Anderson**  
*Secretary, District #2*

David Anderson was appointed in September of 2018. He spent thirteen years as a Project Manager on the design and construction of utility projects, as well as fifteen years prior in construction and project management roles. With a Masters degree in Construction

Management, his experience is invaluable to understanding the District's infrastructure and future planning as the PUD grows. His interest as Commissioner is "to assure that management of the PUD continues to provide reliable and affordable power, water and wastewater..." adding that the role allows him to expand his engagement in community service.

[danderson@clallampud.net](mailto:danderson@clallampud.net) • 360-565-3528



**Jim Waddell**  
*Vice President, District #3*

Jim Waddell is a Civil Engineer who is retired from a 35-year public service career with the U.S. Army Corps of Engineers. For over twenty years of that career he has been a leader in developing the policies and practice of Sustainable Development. He also served with the

Environmental Protection Agency and the National Science Foundation (NSF). Jim's work with the NSF and then as the Senior Policy Analyst for the Environment in the White House office of Science and Technology Policy was largely focused on climate change policy, budgets and research integration. During the early stages of his career, Jim Waddell was an officer in the Army National Guard, serving in Engineer, Signal, and Transportation units.

[jwaddell@clallampud.net](mailto:jwaddell@clallampud.net) • 360-565-3521

## Contact PUD

PO Box 1000

Carlsborg, WA 98324

360-452-9771

Toll-free: (800) 542-7859

[info@clallampud.net](mailto:info@clallampud.net)

[www.clallampud.net](http://www.clallampud.net)



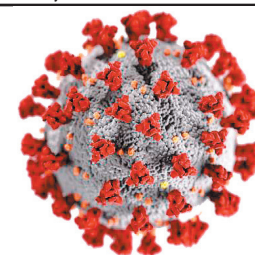
## Fuel Mix

Your PUD's electricity comes from the following fuel mix:

Hydroelectric .....	86.65%
Nuclear.....	10.60%
Unspecified Resources* .....	2.74%
Natural Gas.....	0.01%
Coal.....	0.00%
Petroleum.....	0.00%
Solar.....	0.00%
Wind .....	0.00%
Other Generation .....	0.00%
Total.....	100%

\*BPA Market Purchases

# Doing Business With The PUD and COVID-19 Coronavirus



Amid heightened concerns about coronavirus, businesses, including Clallam PUD, are engaged in minimizing exposure to customers and employees. The District has an Emergency Response and Restoration Plan which covers a variety of emergencies, including pandemic. As it pertains to doing business with the PUD, we have taken steps to help minimize contact with people during this time:

Since our facilities are currently closed to customer access, call or email us for assistance. Our phone, fax and email address are listed at <https://clallampud.net/contact-uslocations-2/>

We have multiple payment options that don't require you to be in-person. Payments can be made by phone, mail, through our website portal, or via our SmartHub app. Information on all of these options can be found at <https://clallampud.net/payments/>. (As a side note, if you use any public device – sanitize your hands afterwards! You should also regularly sanitize your phone or mobile device.)

Are you signing up for a new account? We offer that electronically as well. The online service application is located at <https://clallampud.net/new-service-application/>.

While we love to see our customers and interact in person, we are being cautious in our approach and effort for all of us to pitch in to mitigate the impact to Clallam County!

## SmartHub Quick Facts

- SmartHub is FREE and lets you manage all aspects of your utility account 24/7 online or with your mobile device.
- View all your accounts on one screen, so you can manage multiple properties at once and even pay all with a single payment.
- Provides current and historical billing information and payment history, along with weather data to help you better understand your usage.
- Go green! Sign up for Paperless Billing and Auto Pay.
- Receive email and text notifications about activity on your account.
- Do more without the need to call an office to service your account, pay your bill, update mailing information, or report service issues.
- Report outages and monitor your service status.



Scan the QR code for your device, or search for "SmartHub app" to download the free app!



Payment kiosks are located in the following locations. You will need to know your account number to utilize the kiosks. These kiosks accept credit/debit VISA, MasterCard and Discover cards as well as cash and standard-size checks (no money orders), however they do not make change, but any excess is credited to your account.

### Blyn Payment Kiosk

Located inside the  
Longhouse Market and Deli  
271020 Highway 101  
Sequim, WA 98382

### West Port Angeles Payment Kiosk

Located inside  
Lower Elwha Food & Fuel  
4773 S. Dry Creek Rd.  
Port Angeles, WA 98363

### \*NEW\* Carlsborg Main Office Kiosk (soon to be 24/7)

104 Hooker Road  
Sequim, WA 98382

### Neah Bay Kiosk

Located inside the Makah  
Tribal Education & Training Center  
880 6th Avenue  
Neah Bay, WA 98357

### East Port Angeles Payment Kiosk

Located inside Mt. Pleasant IGS  
3010 E. Hwy 101  
Port Angeles, WA 98362

## The Smart Way - SmartPay!

### No Deposits - No Late Fees - No Billing Statements

Take control of your account with SmartPay!\* Free yourself up from deposits and manage your account from the convenience of your computer or smart phone. SmartPay allows you to:

- Pay what you can, when you can, anytime 24/7!
- Track your daily usage
- Avoid late fees and collection fees
- Your electric service continues as long as you have funds in your account.

**Call 360-452-9771 or 800-542-7859 to sign up!**

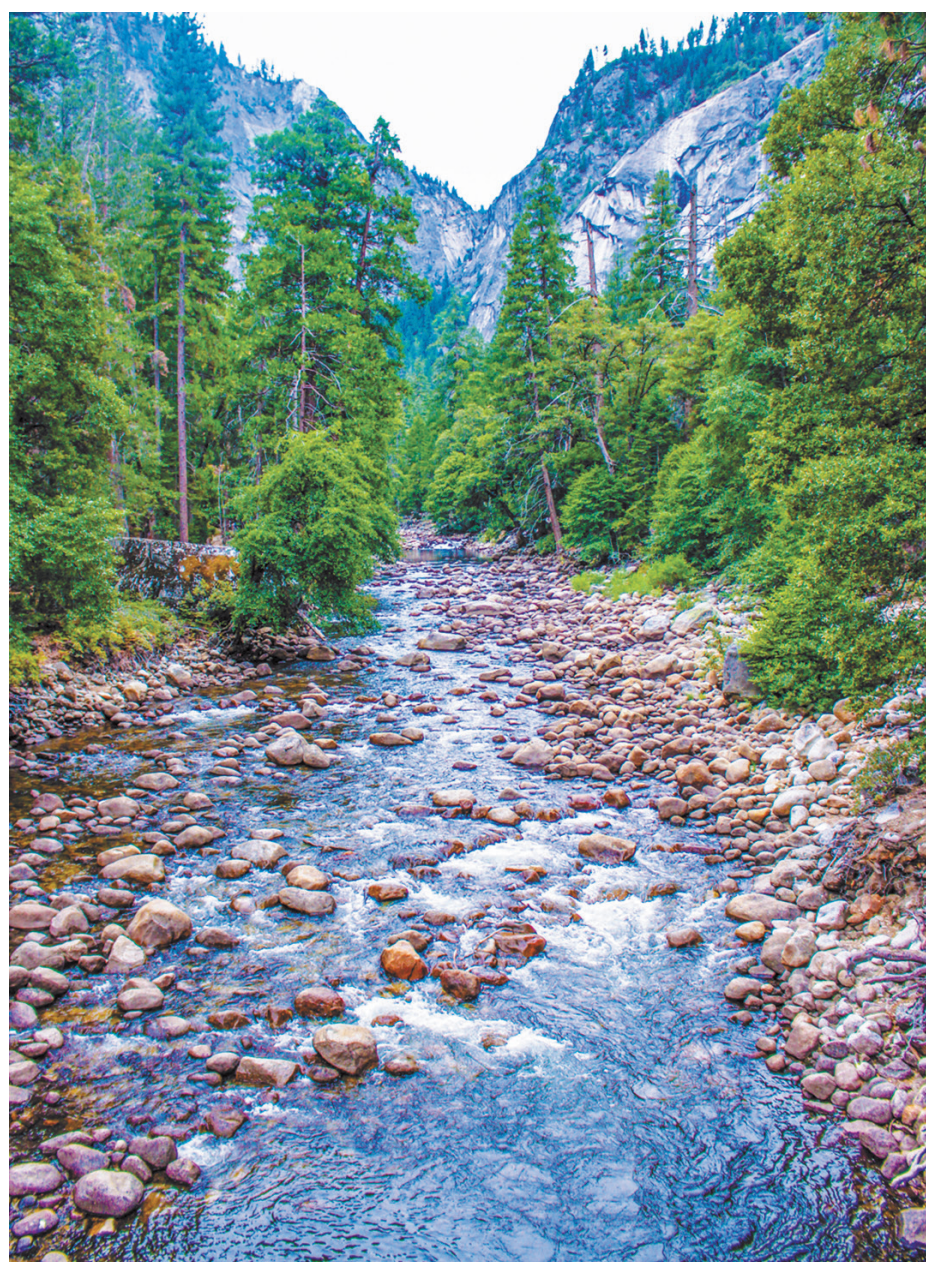
\*Must be enrolled in the SmartHub online account portal with the ability to receive email or text alerts. Upon sign up, any deposit on file will be applied to the account balance. Residential customers with PUD Water, Sewer and/or CT meter service, are not eligible for SmartPay. Other restrictions apply; read the Terms of Service for details.



# 2020 Engineering Projects

*As we enter into construction season, you might be curious as you go about your business as to what the PUD crews that you see out are working on. There's a lot to be done when our crews aren't restoring outages, and summer is push time!*

*Following are a list of this year's major engineering projects where you will see your ratepayer dollars hard at work!*



## **Bagley Creek Transmission Relocation Project**

Clallam PUD at the request of WSDOT is relocating its transmission facilities at Bagley Creek to accommodate a legislatively mandated fish passage improvement project. The existing drainage structure at Bagley Creek at Hwy 101 has been identified as a fish passage barrier. This project is constructing a fish passable structure. The WSDOT project estimate has increased \$11.7 million, to \$16.3 million. The original WSDOT project was to replace a single box culvert. It has been determined that bridges will be needed to accommodate a lower future profile of Bagley Creek and this is reflected in the updated WSDOT scope. Additionally, an unnamed tributary to Bagley Creek was determined to be fish bearing and is now included in the project. Clallam County PUD No. 1 is being reimbursed for the electric work outside of the WSDOT franchise area.

On March 29, 2013, the U.S. District Court issued a permanent injunction requiring the State of Washington to accelerate barrier correction on salmon and steelhead streams within the area subject to the injunction. This area is referred to herein as the "case area". The case area is that portion of the State of Washington west of the Cascade Mountains and north of the Willapa and Columbia River drainages. Clallam County PUD No.1 has been working closely with WSDOT on numerous fish passage projects within its service territory.

## **1) Forks Substation Rebuild and Consolidation Project**

In accordance with Clallam County PUD No. 1's Long-Term Capital Plan the Forks 1 and Forks 2 substations located near Bogachiel Way and Fifth Ave will be rebuilt in 2020 and consolidated during the Summer/Fall seasons. The two existing Forks transformers are nearing 50 and 70 years of age and will be replaced with a single new 69kV/12.5kV transformer purchased from the Virginia Transformer Corporation, all new circuit breakers, relays, SCADA, electrical equipment will be installed during the rebuild project. New and improved control systems and wiring will be installed during the rebuild. The new electrical equipment will substantially improve system reliability and reduce long term operating and maintenance cost. The new Forks Substation Rebuilding Project in combination with previously modernized Calawah, Beaver Camp and Mill Substations will provide the PUD electric customers in the community complete station redundancy for the entire Forks area for the foreseeable future.

## **2) Evans Road Re-conductor and Upgrade Project**

The Evans Road Re-conductor and Upgrade Project involves work on the Evergreen Feeder A (EV-A) which entails extending the 12.5kV primary 3 phase 556 AAC conductors on Evans Road from the Evergreen Substation to the intersection of Sequim Dungeness Road,

### ■ 2 phases to EVAN's road project

- The 1st phase of the Evan's Road Project will be started in 2020
- The 2nd phase of Evan's Road Project will be started in 2021



- This project will give us the ability to tie the EV-A feeder to SL-C or SL-D feeders in the future giving the PUD a solid backup to the Sunland Substation or the Evergreen Substation which will allow more flexibility in emergency and planned maintenance situations.

### 3) Highway 101 Rebuild and Upgrade near Lake Sutherland

Clallam County PUD No.1 will be rebuilding and upgrading the electrical infrastructure along Hwy 101 near Lake Sutherland to improve overall system reliability and reduce ongoing maintenance costs in area affected.

The project involves extending the C-phase (or 3-phase) #2 ACSR - 5,800ft from Lake Sutherland to Herron Cove. The overhead three phase 12.5kV primary conductors will dead end at the Herron Cove Tap. The Hwy 101 PUD electrical load downstream of (or past) Herron Cove (on Hwy 101) will be placed on C phase. The project also involves switching the Herrick Road electrical load from B Phase to A Phase. This will help to more evenly distribute the electrical load on the feeder emanating out of Lairds Corner Substation.

This project is planned to start in 2020.

### 4) Fir Street Electric Upgrade and Underground Conversion Project

Clallam County PUD No.1 is in the process of performing utility relocation work concurrent with the City of Sequim street improvement project on Fir

Street between Sequim Ave. and 5th Ave. The overhead distribution lines on the south side of Fir Street are being relocated and placed underground with higher capacity. This will significantly reduce exposure to traffic and provide circuit redundancy which will improve general system reliability. The project has also improved the visual aesthetics of the area as a secondary unplanned benefit.

### 5) Airport Substation Rebuild Project

The Clallam County PUD No.1 will be rebuilding Airport Substation in Port Angeles as part of the West Port Angeles 69kv to 115kv upgrade project. The project involves replacing the 69kV Existing Station Transformer with the spare 115kV Transformer taken out of the Evergreen Substation in Sequim. The project also involves the installation of a new 115kV S&C Circuit Switcher, new Siemens medium voltage circuit breakers, new SEL relays and controls, all new 12.5kV bus work and disconnect switches, new 12.5kV feeder getaways, new control wiring/conduits, and new/enhanced SCADA capability to monitor the substation equipment remotely.

The project is scheduled to begin in May 2020 and is on track to be completed in the Fall 2020 timeframe. This project will improve system reliability in the Port Angeles Airport Substation area and the new equipment will help to reduce ongoing O&M costs associated with the existing older equipment. The new equipment (relays and controls) will be monitored thru the SCADA system located in the PUD Dispatch Center in Carlsborg, WA.



# EVERYONE COUNTS! CENSUS 2020

## 2020 Census at a Glance

The census is much more than just a head count. It provides a picture of our nation that helps determine where to build new schools, hospitals, and businesses; how federal funding is distributed; and how congressional seats are apportioned. It also helps us see how our communities have changed over time.

That's why an accurate count is so important.

## Understanding the Census

Once every decade, the federal government conducts a census of the entire population to count everyone in the United States and record basic information about them. Our nation's founders believed this data was so important that they mandated the decennial census in the Constitution.

## Easy and Convenient

In 2020, for the first time ever, the U.S. Census Bureau will accept responses online, but you can still respond by phone or mail if you prefer.

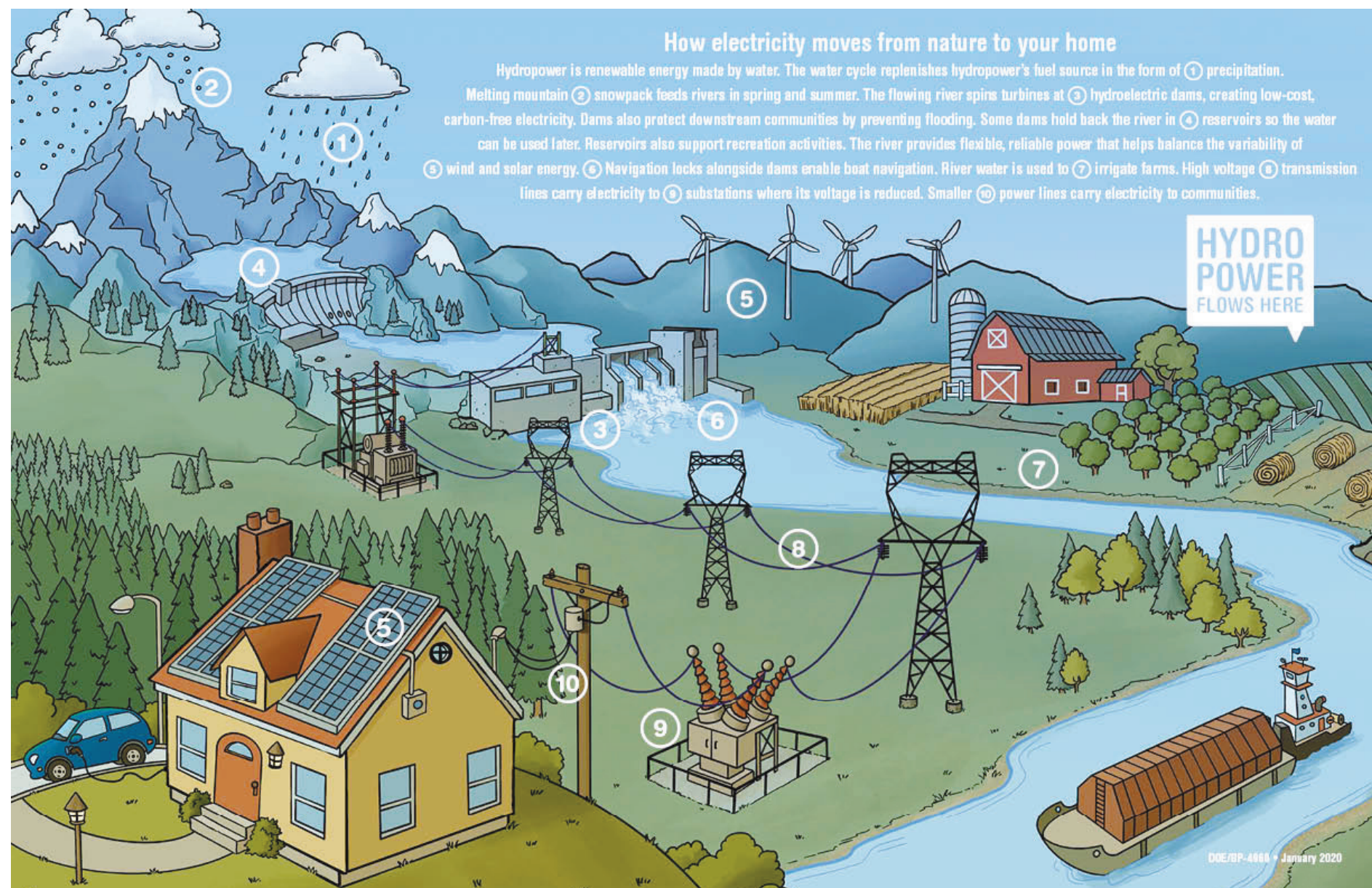
## Confidential and Secure

Strict federal law protects your census responses.

It is against the law for any Census Bureau employee to disclose or publish any census information that identifies an individual or business. Census Bureau employees take a lifelong pledge of confidentiality to handle data responsibly and keep respondents' information private.

The penalty for wrongful disclosure is a fine of up to \$250,000 or imprisonment for up to 5 years, or both. No law enforcement agency (not the DHS, ICE, FBI, or CIA) can access or use your personal information at any time. Data collected can only be used for statistical purposes that help inform important decisions, including how much federal funding your community receives.

*continued next page*





from page 6

The Census Bureau will never ask for your Social Security number, bank or credit card account numbers, money or donations, or anything on behalf of a political party.

The Census Bureau has a robust cybersecurity program that incorporates industry best practices and federal security standards for encrypting data.

To make sure you and your community are counted, learn more about the 2020 Census by visiting [2020census.gov](https://2020census.gov)

ELECTRIC VEHICLES

- BENEFITS
- EV FACTS
- SAVINGS CALCULATOR
- CO2 REDUCTION
- EV MODELS
- PHEV MODELS
- OFFERS & EVENTS
- CHARGER FINDER

Electric vehicles, a smart transportation choice.

- Electric Vehicles (EV) Cost Less To Operate Than Gas Powered Cars.**  
EV operation can be three to five times cheaper than gasoline and diesel powered cars, depending on your local gasoline and electric rates.
- EVs Are Environmentally Friendly.**  
EVs have no tailpipe emissions. The power plant producing your electricity may produce emissions, but electricity from hydro, solar, nuclear or wind-powered plants is generally emission-free.
- Never Go To The Gas Station Again.**  
Electric vehicles do not require gasoline and can be charged at home with a standard 120V outlet or a 240V level 2 charger can be installed for faster, more efficient charging.
- EV Performance Benefits.**  
Electric motors provide quiet, smooth operation, stronger acceleration and require less maintenance than gasoline-powered internal combustion engines.
- EV Driving Range & Recharge Time.**  
EV range is typically around 80 to over 330 miles on a full charge. The average American's daily round-trip commute is less than 30 miles. Fully recharging the battery pack can take four to eight hours. A "fast charge" to 80% capacity can take 30 min.\*



How to purchase an EV

Purchasing an EV is a little different than purchasing a gas-powered vehicle. It is important to understand key elements, such as vehicle range-per-charge and how tax credits work. Here are the typical steps you can take when considering an EV:

1. Find out if an EV is right for you.
2. Choose an EV model.
3. Find rebates, tax credits, incentives & discounts.
4. Test drive & purchase your new EV.

New Electric Vehicle Resource

We have launched a new webpage dedicated solely to electric vehicles! You can find it under our "Safety & Education" main menu drop-down list, or directly at <https://clallampud.net/electric-vehicles/>.

This new page contains general information about electric vehicles and charging. It also contains tools and calculators to help you find the right EV for you, a savings calculator so you can determine your savings versus a conventional gas-powered vehicle, compare models, and find a charging station.

We hope you will enjoy exploring this new content. Let us know what you think! Email us at [info@clallampud.net](mailto:info@clallampud.net).

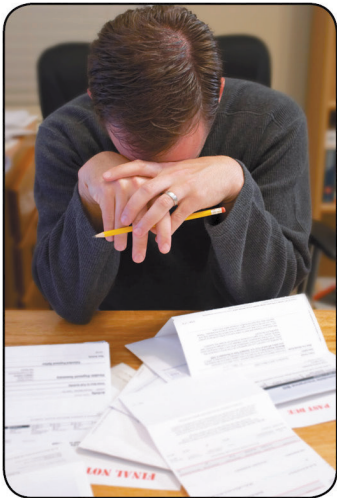


**Round up your bill and donate to the Neighborly Assistance fund!**

There are those around us who occasionally need a helping hand. The Neighborly Assistance Program provides assistance to qualified low-income residential customers in paying their electric bills. The PUD does not deduct any administrative costs and gives 100% of the contributions directly to local community agencies. The funds are used to help families in Clallam County in emergency situations.

You may make a one-time donation or enroll to contribute a set amount each month. Only one payment is necessary for both your contribution and your PUD bill. Pledges may be canceled at any time by contacting the PUD.

You can sign up for the Neighborly Assistance Program by printing and filling out the enrollment form shown here and including it in your bill payment envelope, or you can sign up for the program by contacting any PUD office.

A photograph of a young child in a superhero costume, including a red mask and a blue suit with a red cape. The child is standing against a white background.

# POWER RESERVES

(n.) The additional power supply kept on hand to meet above-normal energy demands due to conditions such as extreme weather, outages or other power system conditions.

#HydroFlowsHere

**Neighborly Assistance Program**

You can help neighbors in need by donating to this fund. Indicate how you would like to contribute and your choice of agency below. Please clip and enclose this with your PUD payment or drop off at your nearest PUD office. *(If submitting with payment, only one payment is necessary for both your contribution and your PUD bill.)*

Name: \_\_\_\_\_  
Acct. No.: \_\_\_\_\_ Phone No.: \_\_\_\_\_  
Address: \_\_\_\_\_  
\_\_\_\_\_

My choices for participation in the Neighborly Assistance Program are indicated below. This **replaces** any previous pledges.

☐ Please bill \$ \_\_\_\_\_ every month, beginning with my next statement, until I contact the PUD to cancel.

☐ I prefer a one-time contribution of \$ \_\_\_\_\_

I want my one-time or monthly contribution to go to:

\$ \_\_\_\_\_ to Olympic Community Action Programs

\$ \_\_\_\_\_ to Port Angeles St. Vincent de Paul

\$ \_\_\_\_\_ to Sequim Community Aid

\$ \_\_\_\_\_ to Sequim St. Vincent de Paul

Signature: \_\_\_\_\_ Date: \_\_\_\_\_

A photograph of several jars filled with various colored jams or preserves, including red, orange, and yellow.

# RESOURCE ADEQUACY

(n.) The amount of power supply needed to meet energy needs across a wide range of weather and power system conditions.

#HydroFlowsHere